

# TRUCK ROUTES ORDINANCE

**City of Jacksonville Ordinance 2017-807**  
*(New Part 16 – Truck Routes Regulations;  
Chapter 804 – Jacksonville Traffic Code)*

The use of the public roads within the City is to serve the daily needs of its citizens. Truck movement is essential to providing the vital goods and services citizens need in daily interactions. The ordinance does not prohibit trucks from using all roads within the municipality, but it does require the use of certain roads that are more suitable for truck traffic to the greatest extent possible, and also to minimize truck intrusion into sensitive areas, to the greatest extent possible.

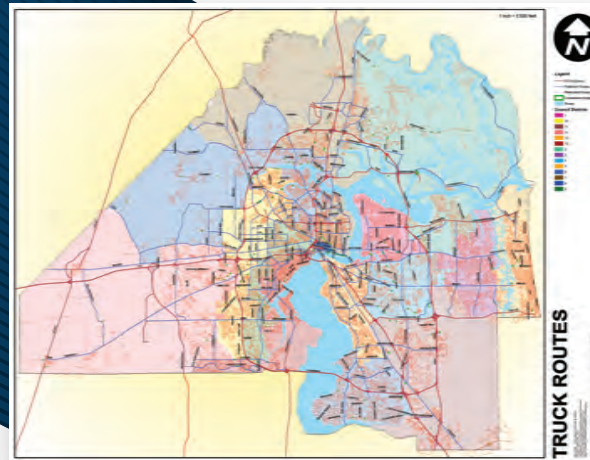
Truck route ordinance and map are available at <http://bit.ly/truckroutesordinance>.



## PATROL ZONE SUBSTATIONS:

**Downtown / Springfield / Eastside**  
P: 904.630-8144 | F: 904.630-8155 | JSOZone1@jaxsheriff.org  
Gateway Town Center  
5258-13 Norwood Avenue - 32208

**Arlington / Intracoastal West**  
P: 904.630.8166 | F: 904.630-8170 | JSOZone2@jaxsheriff.org  
Regency Square Mall  
9501 Arlington Expressway - 32225



**Southside / Mandarin / San Marco**  
P: 904.630.8100 | F: 904.630.8101 | JSOZone3@jaxsheriff.org  
Prominence Parkway  
8875 Liberty Ridge Drive, Suite 110 - 32256

**Riverside / Avondale / Ortega / Westside**  
P: 904.630.8133 | F: 904.630.8122 | JSOZone4@jaxsheriff.org  
Cedar Hills Shopping Center  
3726 Blanding Boulevard, Jacksonville, FL 32210

**Northwest / New Town / Baldwin**  
P: 904.470.8900 | F: 904.384.8610 | JSOZone5@jaxsheriff.org  
Edward Waters College  
1767 Kings Road- 32209

**Northside / San Mateo / Oceanway**  
P: 904.630.8688 | Fax: 904.630.8677 | JSOZone6@jaxsheriff.org  
Highland Square Shopping Center  
936 Dunn Avenue - 32218

## HOURS OF OPERATION:

**Monday - Friday; 8 AM - 5 PM**

CITY OF JACKSONVILLE

# TRUCK ROUTE SYSTEMS

**Planning & Development Department**  
904.255.7800 | [lurise@coj.net](mailto:lurise@coj.net)

**City Traffic Engineer**  
904-255-7533 | [CLeDew@coj.net](mailto:CLeDew@coj.net)

**630-CITY**  
904.630.2489 | [630CITY@coj.net](mailto:630CITY@coj.net)

# OBJECTIVE OF THE TRUCK ROUTE SYSTEM

The truck routes ordinance establishes truck routes within the City that reduce the use of regulated trucks traveling on restricted roads (except for delivery and pickup); enhance safety for vehicles, bicyclists, and pedestrians; and minimize pavement maintenance in conjunction with the following:

- Designate acceptable routes for trucks to access the Strategic Intermodal System (SIS) and State Highway System (SHS) in order to complete extended distance travel;
- The City Traffic Engineer to install signage designating the truck route system;
- Protect residential neighborhoods from:
  1. Excessive truck traffic creating greater hazards to pedestrians and bicyclists;
  2. Increased congestion and noise pollution from truck traffic; and
  3. Pavement pot holes, raveling, rutting, and other pavement distress conditions that cause hazards to motorcyclists, bicyclists, pedestrians, motorists and local residents;
- Procedures for enforcing truck route violations.



## SCAN ME

with a QR code reader to view the truck route ordinance and map.

# TRUCK ROUTE DEFINITIONS

For the purpose of this ordinance:

**Gross Weight** means the net weight of the motor vehicle in pounds plus the weight of the load carried by it, pursuant to Florida Statute 320.01(7).

**Regulated Truck** means a truck having a gross weight which exceeds 26,001 pounds, and is designated for the specific purpose of transporting freight. A regulated truck does not include those trucks that are used for government, utility, or solid waste purposes.

**Truck Route System** means those streets that are defined and identified as truck routes on the City of Jacksonville Regulated Truck Route Map as described below:

**Preferred Truck Routes (Blue)** means those routes or roads designated for travel for regulated trucks as the primary means of travel within Jacksonville

**Restricted Roads (Red)** means those routes or roads that are prohibited for travel or use by regulated trucks.

**Non-regulated Truck Routes (Grey)** means those routes or roads that are not designed as a preferred truck route or restricted road. Regulated trucks are permitted to travel on these truck routes.

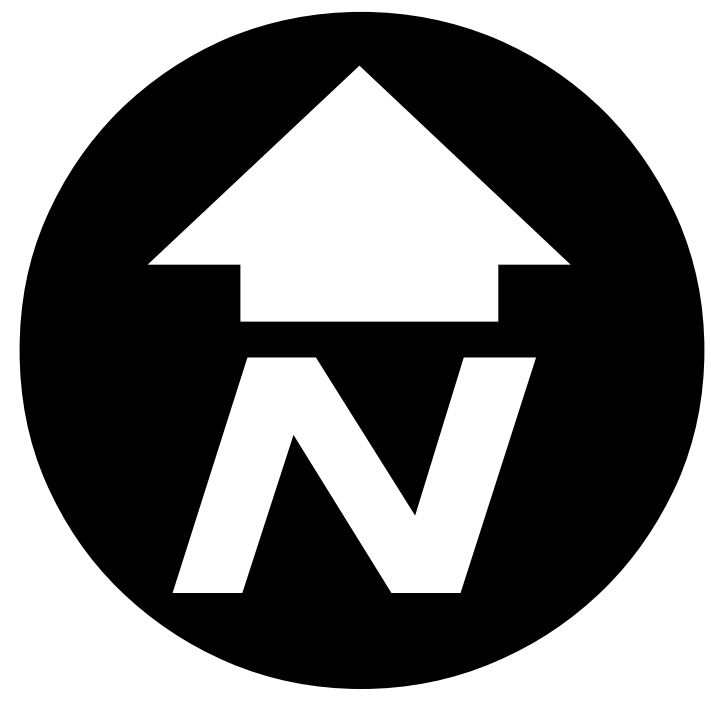
# ENFORCEMENTS & PENALTIES

**Chapter 804, Ordinance Code** directs the Jacksonville Sheriff's Office to issue warnings for the first 6 months after the effective date (1/22/2019).

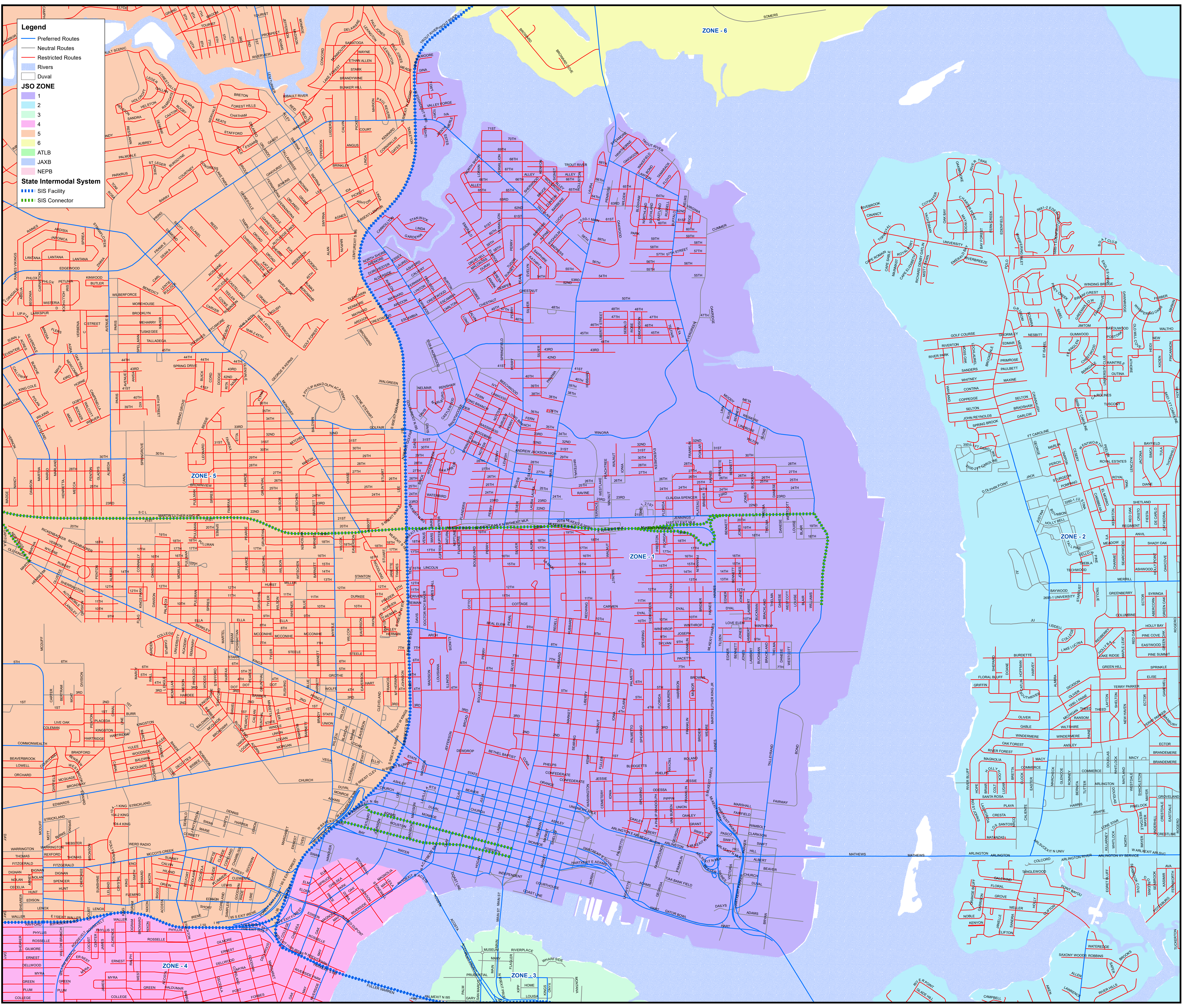
**Sec. 804.1606 – Documented Records required for operation on a Restricted road (Red); enforcement; penalties.**

- (a) Any person driving or in charge or control of any regulated truck operating on a Restricted Road (Red) shall be prepared to present for the inspection to the Jacksonville Sheriff's Office ("JSO") officers, the truck's log book, weight slips, delivery slips, or other written records of the regulated truck's origin and destination to justify the operation on the Restricted Road (Red).
- (b) Due to the transient nature of these actions, a violation of this Section shall constitute an irreversible and irreparable violation and will result in the immediate issuance of a civil citation by a JSO officer pursuant to Section 804.301, Ordinance Code and Section 636.204, Ordinance Code.
- (c) A violation of this Section shall constitute a Class C offense.

**For Truck Routes System Map visit <http://bit.ly/truckroutesmap>**



# COJ Regulated Truck Route System Map



**Legend**

- Preferred Routes
- Neutral Routes
- Restricted Routes
- Rivers
- Duval

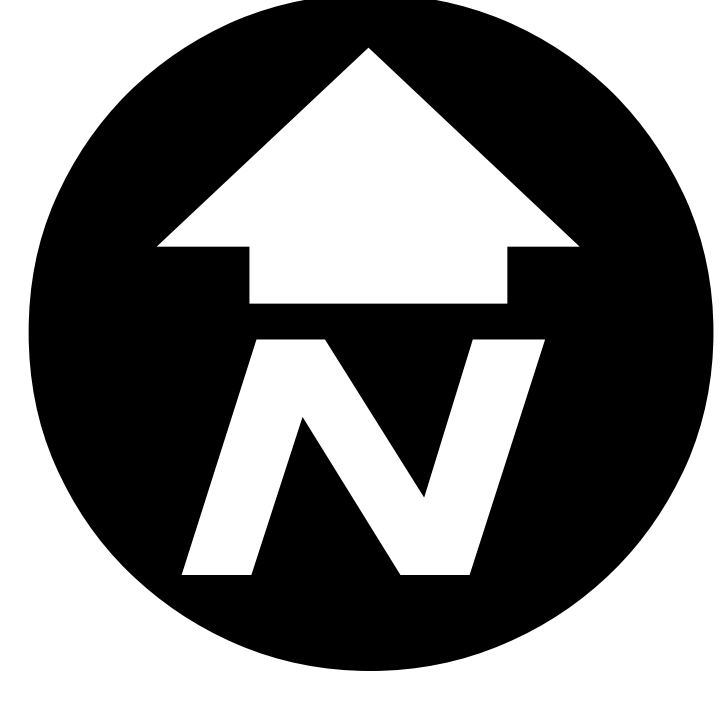
**JSD ZONE**

- 1
- 2
- 3
- 4
- 5
- 6

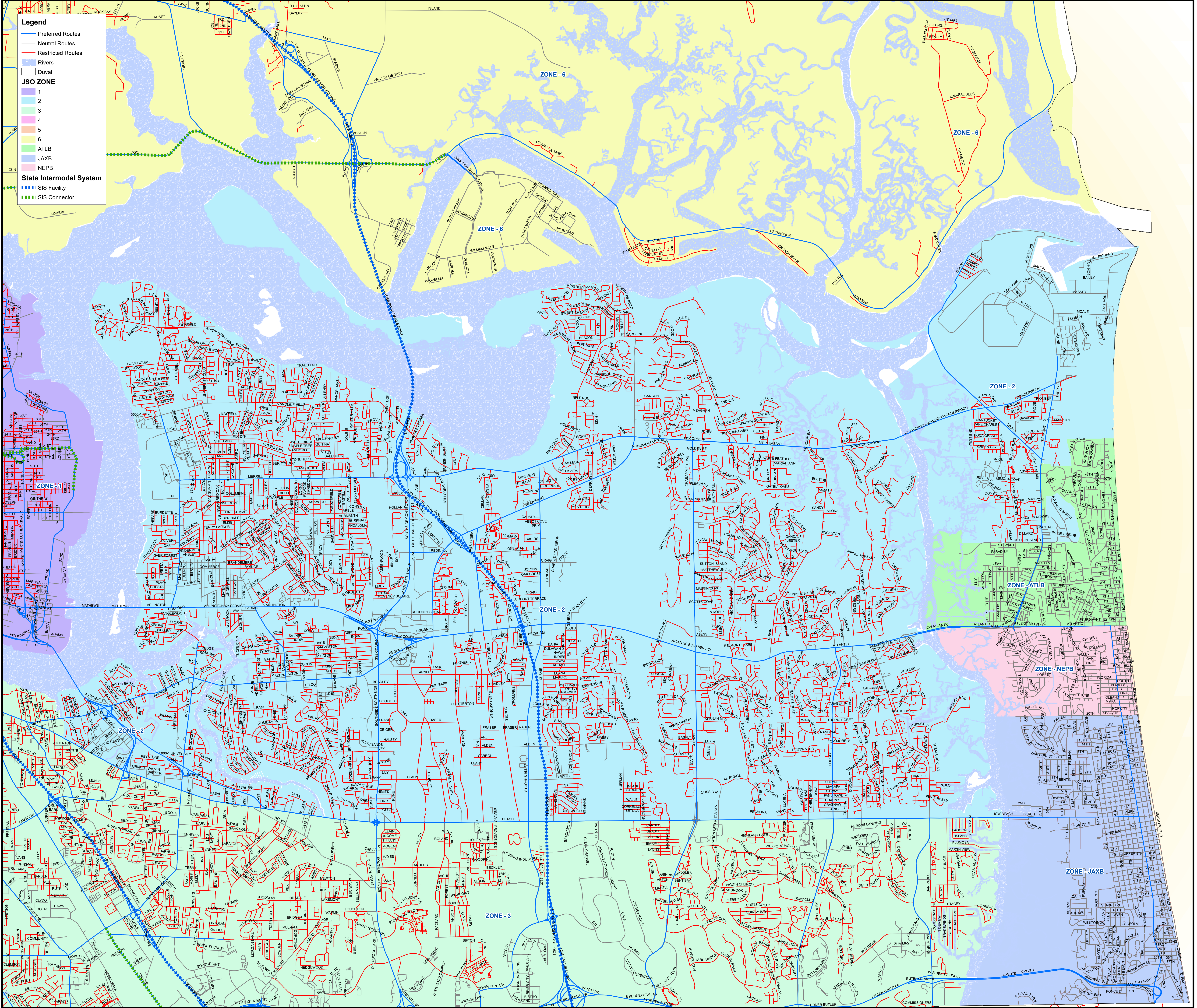
**State Intermodal System**

- SIS Facility
- SIS Connector

Map Scale: 1 inch equals 5,000 feet at ANSI E  
Created: February 20th, 2019  
Developed by: COJ Planning and Development GIS Section  
T:\Transportation\GIS\SSS\ROUTE\_02192019.mxd  
This document is intended for illustrative purposes only.



# COJ Regulated Truck Route System Map



**Legend**

- Preferred Routes
- Neutral Routes
- Restricted Routes
- Rivers
- Duval

**JSO ZONE**

- 1
- 2
- 3
- 4
- 5
- 6

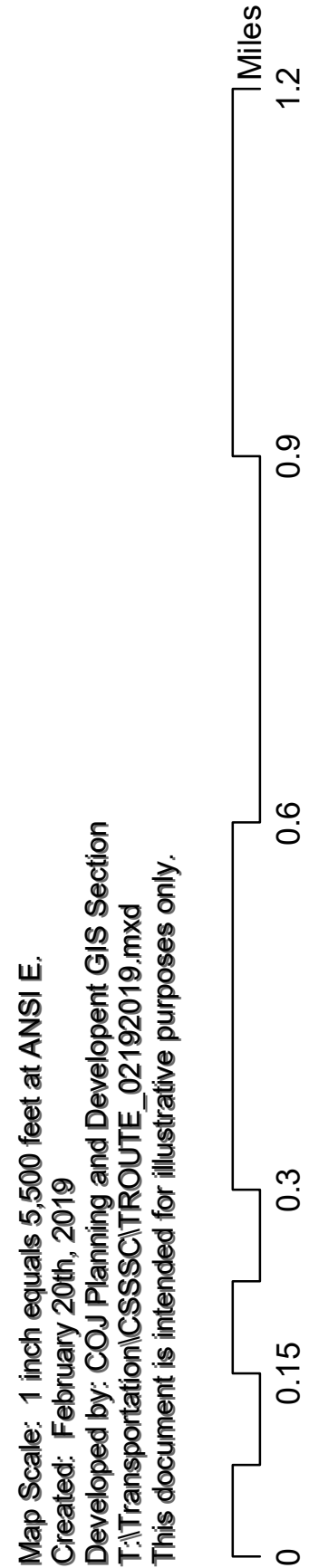
**ATLB**

**JAXB**

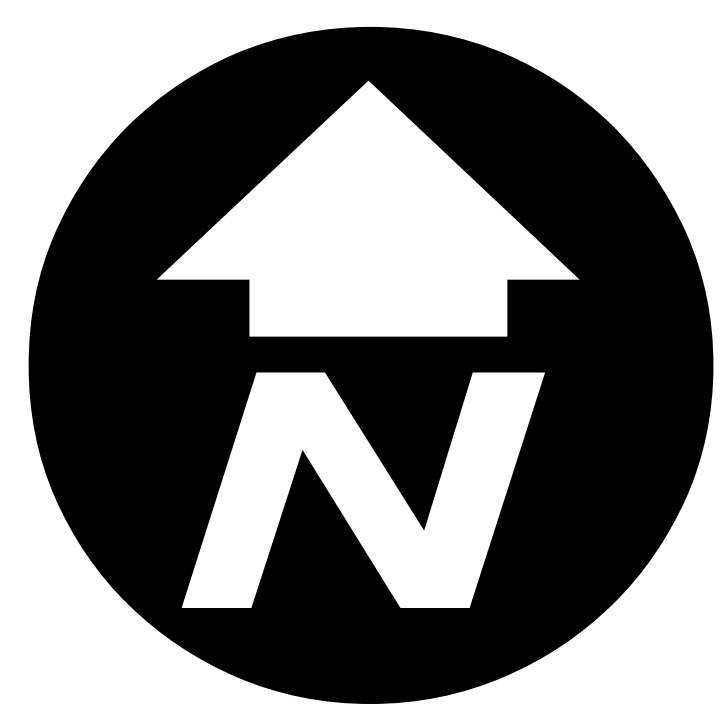
**NEPB**

**State Intermodal System**

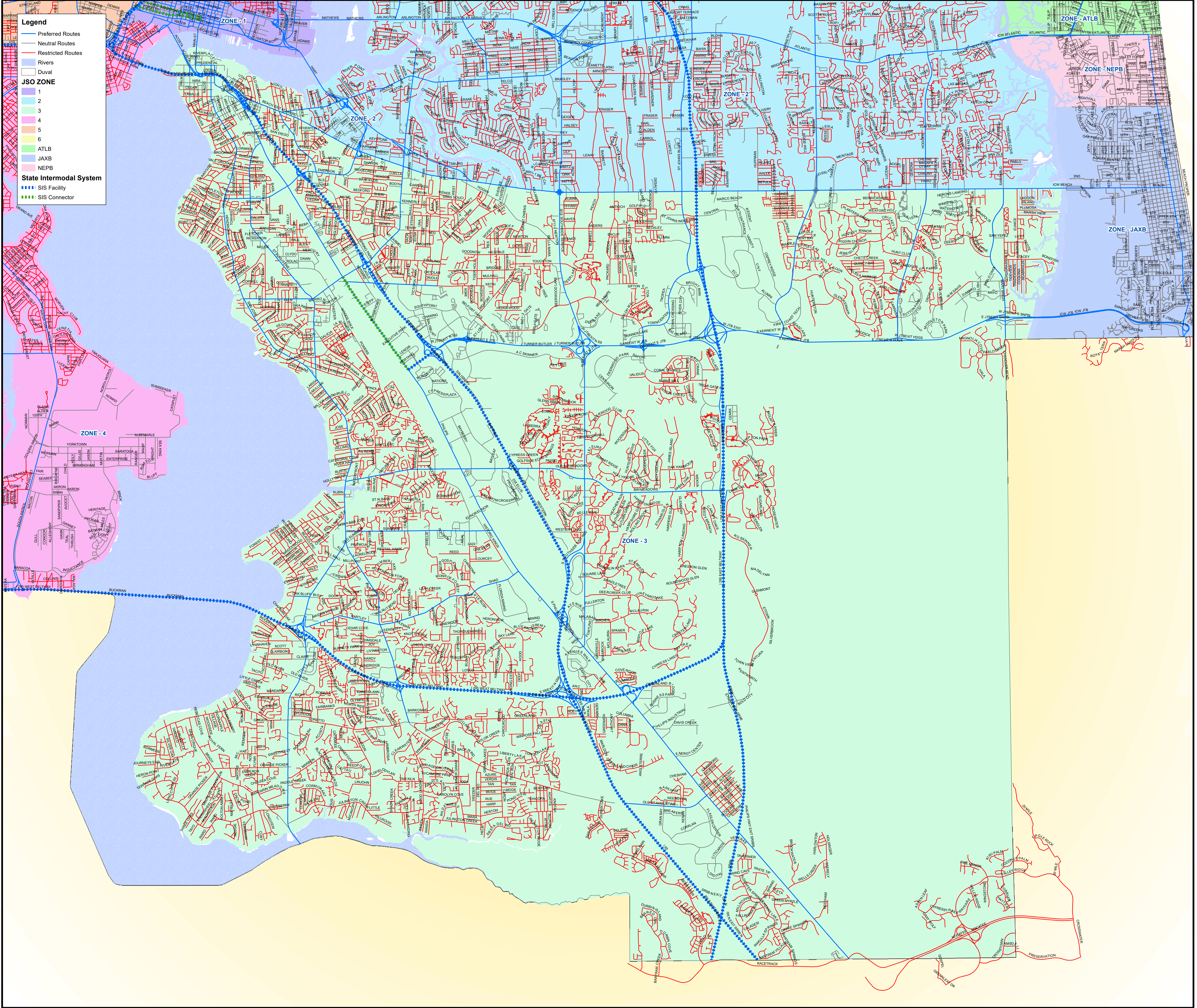
- SIS Facility
- SIS Connector



Map Scale: 1 inch equals 5,500 feet at ANS E  
Created: February 20th, 2019  
Developed by: COJ Planning and Development GIS Section  
T:\Transportation\GIS\SSS\TRUCK\T\_E\_02192019.mxd  
This document is intended for illustrative purposes only.



# COJ Regulated Truck Route System Map



**Legend**

- Preferred Routes
- Neutral Routes
- Restricted Routes
- Rivers
- Duval

**JSO ZONE**

- 1
- 2
- 3
- 4
- 5
- 6
- ATLB
- JAXB
- NEPB

**State Intermodal System**

- SIS Facility
- SIS Connector

Map Scale: 1 inch equals 5,500 feet at ANSI E.  
Created: February 20th, 2019  
Developed by: COJ Planning and Development GIS Section  
T:\Transportation\GIS\SSS\ROUTE\_02192019.mxd  
This document is intended for illustrative purposes only.

0 0.15 0.3 0.6 0.9 1.2 Miles

**Legend**

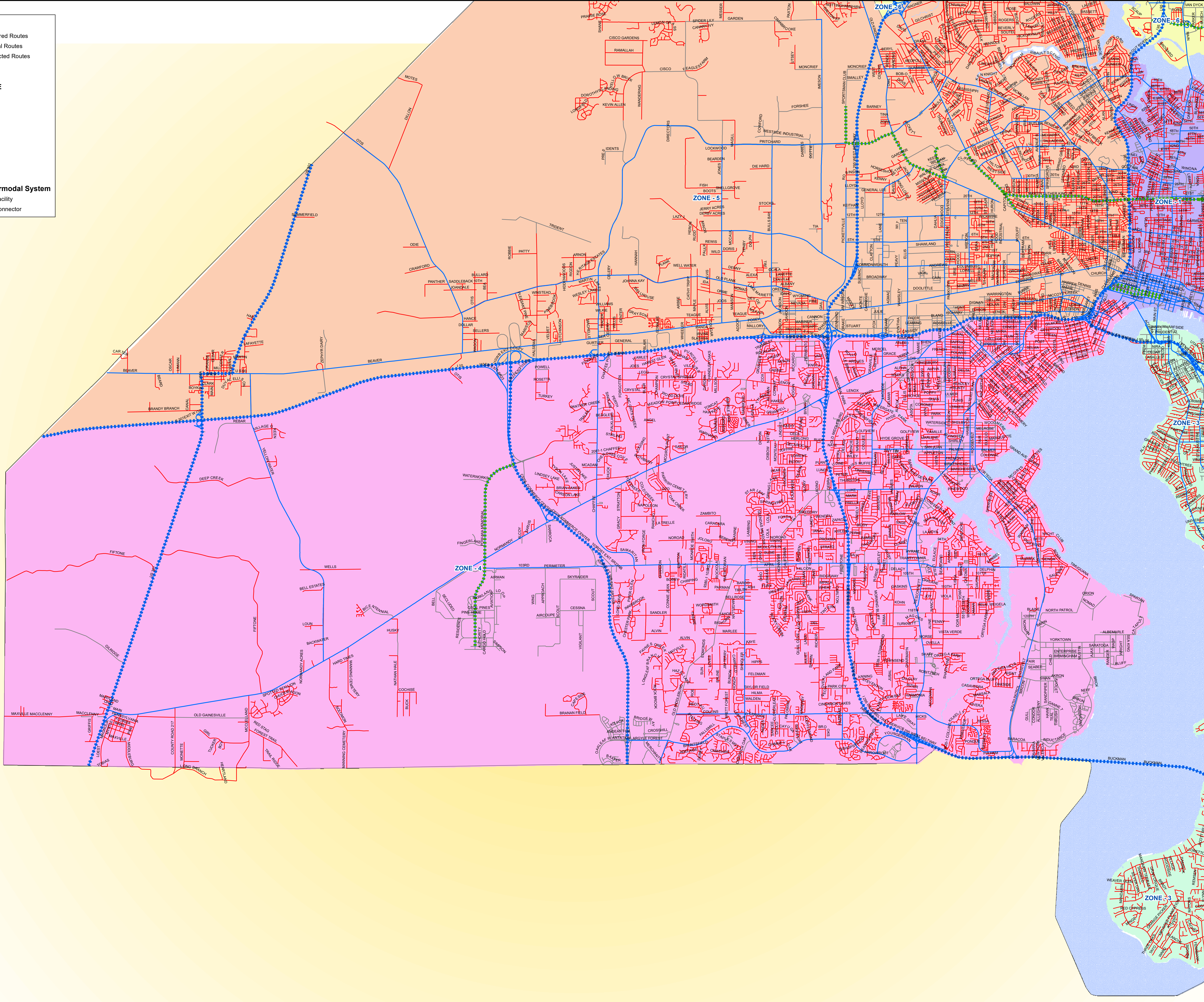
- Preferred Routes
- Neutral Routes
- Restricted Routes
- Rivers
- Duval

**JSO ZONE**

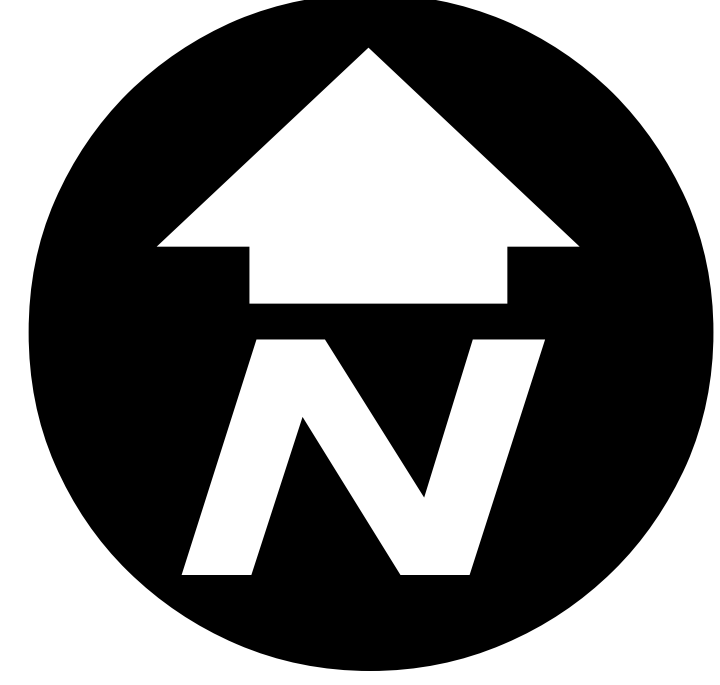
- 1
- 2
- 3
- 4
- 5
- 6
- ATLB
- JAXB
- NEPB

**State Intermodal System**

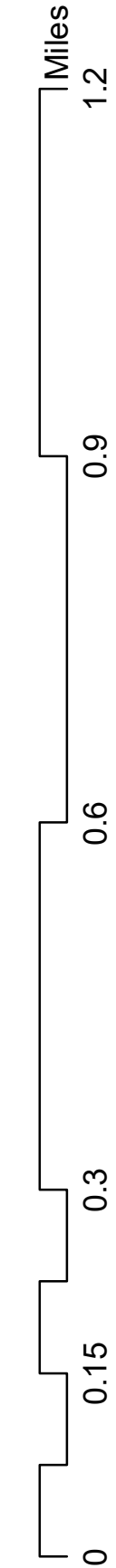
- SIS Facility
- SIS Connector

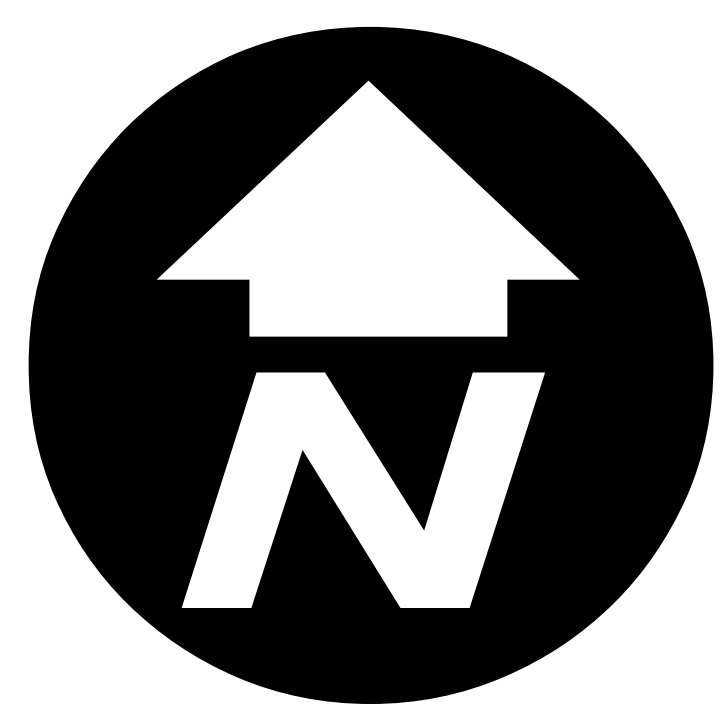


# COJ Regulated Truck Route System Map



Map Scale: 1 inch equals 5,500 feet at ANSI E.  
 Created: February 20th, 2019  
 Developed by: COJ Planning and Development GIS Section  
 T:\Transportation\GIS\SSS\TRUCKROUTE\_02192019.mxd  
 This document is intended for illustrative purposes only.





# COJ Regulated Truck Route System Map

**Legend**

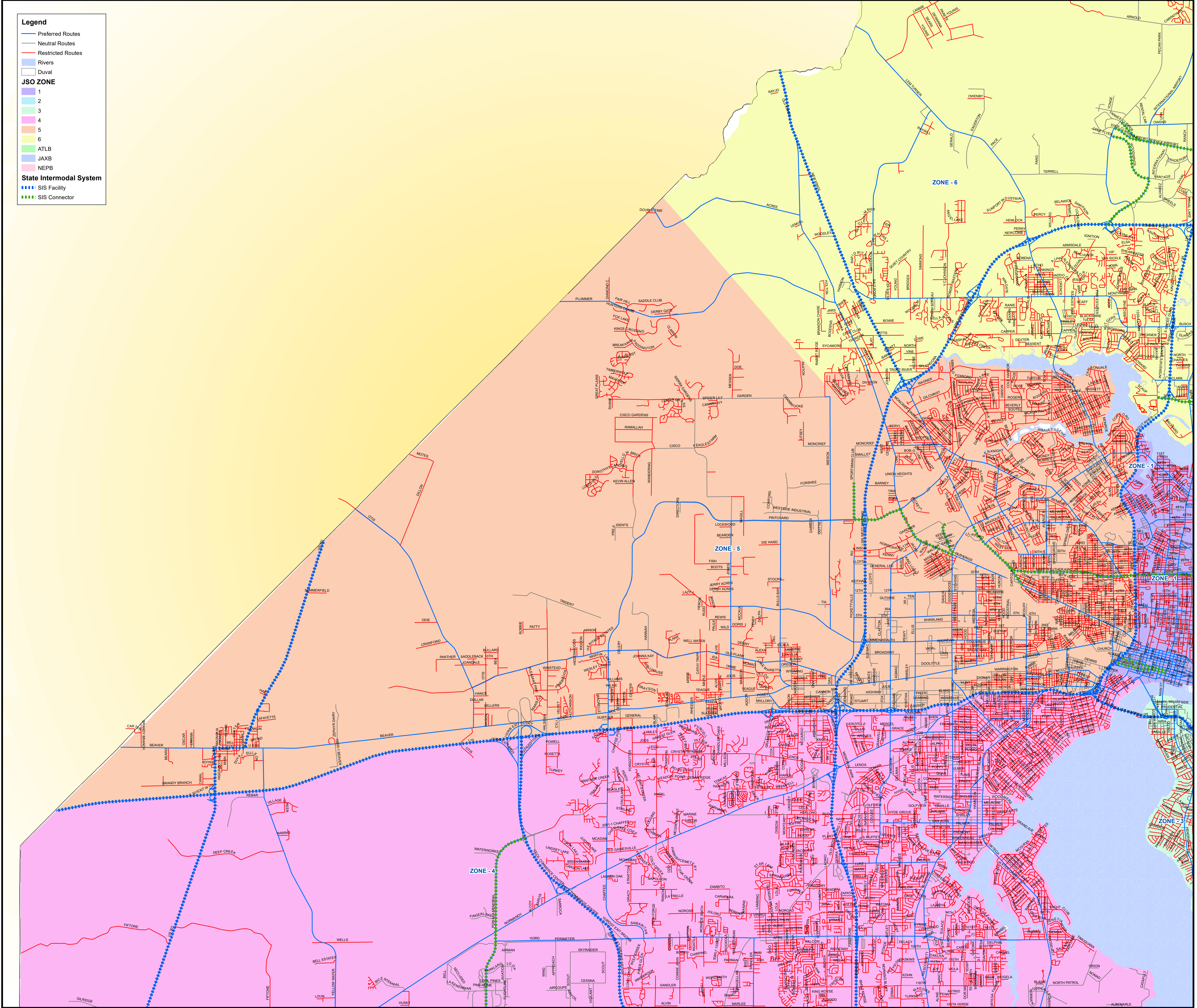
- Preferred Routes
- Neutral Routes
- Restricted Routes
- Rivers
- Duval

**JSO ZONE**

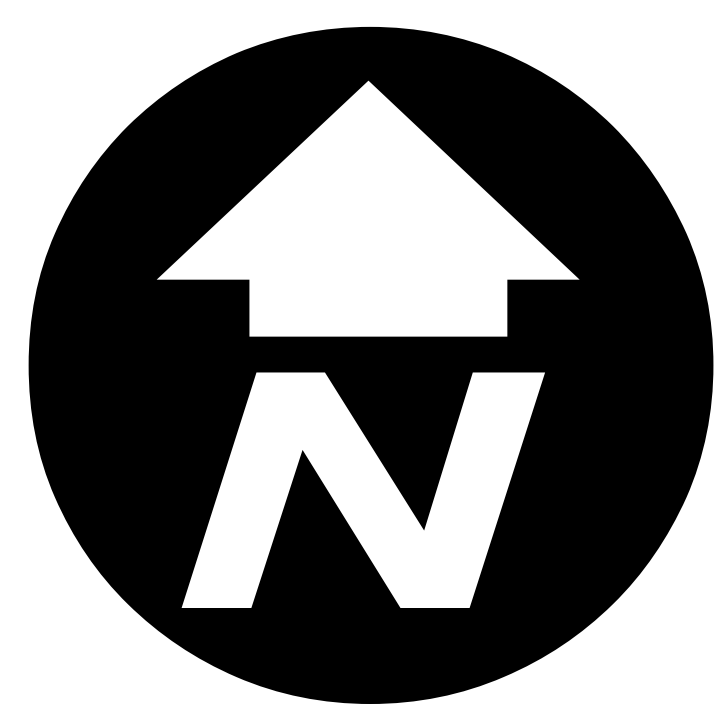
- 1
- 2
- 3
- 4
- 5
- 6

**State Intermodal System**

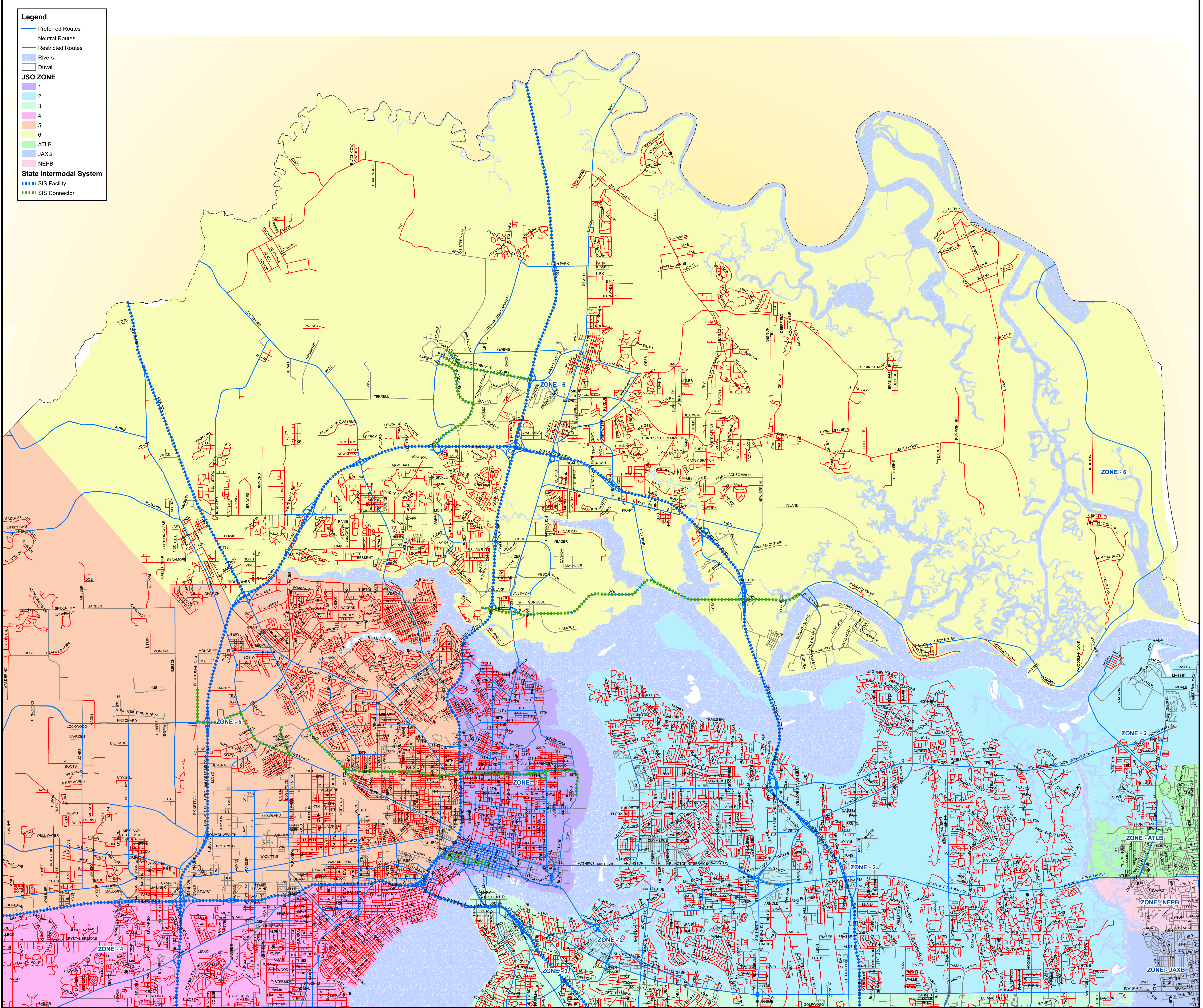
- SIS Facility
- SIS Connector



Map Scale: 1 inch equals 5,500 feet at ANSI E  
Created: February 20th, 2019  
Developed by: COJ Planning and Development GIS Section  
T:\Transportation\GIS\SSS\TRROUTE\_02192019.mxd  
This document is intended for illustrative purposes only.



# COJ Regulated Truck Route System Map



**Legend**

- Preferred Routes
- Neutral Routes
- Restricted Routes
- Rivers
- Duval

**JSO ZONE**

- 1
- 2
- 3
- 4
- 5
- 6
- ATLB
- JAXB
- NEPB

**State Intermodal System**

- SIS Facility
- SIS Connector

Map Scale: 1 inch equals 5,500 feet at ANS I E  
Created: February 20th, 2019  
Developed by: COJ Planning and Development GIS Section  
T:\Transportation\GIS\SSS\TRROUTE\_02192019.mxd  
This document is intended for illustrative purposes only.

0 0.15 0.3 0.6 0.9 1.2 Miles