

District #6
Citizens Planning Advisory Committee
Chair: Mike Getchell

MEETING SUMMARY

Florida State College at Jacksonville North Campus
4501 Capper Rd. Room C-136
June 13, 2012

Attendance:

Members:

Chair - Mike Getchell
Amelia View - Nancy Burnett
Ashford Wood - Evelyn "Kathy" Myers
Black Hammock Island Civic Association - Mary Thompson
Charter Member - Richard Berry
Charter Member - David Spruill
Council Appointee District 11 - Tommy Ruffin
Duval County Council of PTS/PTA Association - Vicki Drake
Eagles Hammock - Nancy Landau
Heckscher Drive Community Club - Gerie Leigh
Johnson Community Civic Association - James Shronce
National Park Service - Shauna Allen
Northlake Homeowners Association - Howard Miller
Northside Lions - Harry Wagner
ShAdCo Q - Mozelle Masters
The Cape Association - Delores Spruill

Excused:

Charter Member - Dot Mathias
Betz Realty, Inc. - William Baker
Captiva Bluff Neighborhood Association - Rex Neidlinger
Duval County PTS/PTA - Vicki Drake
Florida Open Beaches - Bobby Taylor
Highlands Homeowners, Jack Stuart
Northlake Homeowners Association - Josephine Fiveash-Porter
Northside Business Leaders - Michael Fisher
ShAdCo Q - Jennelle Bray
Turtle Creek Village - Art Sullivan

Absent:

San Mateo - Roland Biederer

Elected Officials:

Florida House of Representatives - Janet Atkins
Florida House of Representatives - Lake Ray

Staff:

Florida Department of Transportation - Thomas Hill
Jacksonville Sheriff's Office - No Representative
Mayor's Liaison - Mike Sweat
Parks & Recreation - Brian Burket
Planning & Development - Gary Kresel
Neighborhoods, Housing & Community Development - Mary Beth Ridderman
Neighborhoods, Municipal Code Enforcement - Bruce Michael O'Loughlin
North Florida Transportation Planning Organization - Milton Locklear

Guests:

Amelia View, Gay Septon
Angel Lakes Estates, Evelyn Kimbrough
Marshwinds, Preben Rameeldt
A.W. Barlow
Danny Dupucece
Paula Scott, Angel Lakes
Gwen Desuse, Angel Lakes

Danny Ferreira
J. Robert Peeples
Copper Hill IV, Reverend Joseph Tate
Alberta Hipps, Hipps Group
Lara Hipps, Hipps Group
Donna Thomas

1. Call to Order/Verify Quorum

Mr. Getchell called the meeting to order at 4:02 p.m. A quorum was verified by Ms. Ridderman.

2. Approval of the Previous Meeting Summary

A motion to approve the May summary was made by Richard Berry and seconded by Tom Ruffin.
The vote: All in favor.

3. Staff Reports

- **JSO (Jacksonville Sheriff's Office)** – no representative was present. Mr. Ruffin suggested residents visit the Jacksonville Sheriff's Office website: <http://www.coj.net/departments/sheriffs-office.aspx>
- **Mayor's Liaison** – Agriculture Extension Office Director, Mike Sweat reported:
 - Mayor Alvin Brown will be at the August 8 North CPAC meeting.
 - The projected opening date for the new courthouse is June 18.
 - Copies were provided of the Extension Office's flyer, *Captive Audience*.
 - Copies were provided of the Extension Office's newsletter, *A New Leaf*
<http://duval.ifas.ufl.edu/documents/ANewLeafnewsletterMay-June.2012.pdf>.
 - The Camp Florida Friendly Adult Day Camp is scheduled on June 13, 15, 20 and 22.
 - Rain Barrel Workshop
 - Make & Take Worm Bin
 - Butterfly Gardening
 - Irrigation Systems... and more classes are offered.
 - The Duval Extension office provided classes for 186,000 residents, utilized services of 11, 059 trained volunteers, with over 35,000 donated hours, and saved the city \$764,773.
 - Chair Getchell thanked Mr. Sweat for his assistance in arranging Mayor Alvin Brown as the August 8 speaker.
- **Duval County Public Schools** – No representative. No report.
- **FDOT (Florida Department of Transportation)** – Thomas Hill reported:
 - He provided a copy of the ferry survey via Ms. Ridderman's e-mail distribution list. The survey found that 92 percent of trips are local trips. The State will not be the sole funding source. They are discussing with the City of Jacksonville.
 - A presentation was made regarding the I-95/Martin Luther King (MLK) interchange. This is a safety project which will improve vehicle on and off access from MLK. It will increase the number of drainage ponds and improve area drainage. The estimated completion date is late in 2013. Mr. Hill displayed detailed drawings of the proposed interchange. Questions, answers and discussion followed.
 - I-10 projects include:
 - Rebuild/reconstruct sections of I-10
 - Add lanes from Branan Field Chaffee Road to I-295
 - Relocate the Marietta on/off ramps to Hammond Road at Ramona Boulevard. The bidding phase will begin in 2013.
- **Neighborhoods**
 - **Housing and Community Development Division** – Mary Beth Ridderman announced she provided a written report.
 - **Municipal Code Compliance Division** – Bruce Chauncey reported:
 - Systematic inspections have been suspended due to loss of personnel.

- If residents get cited for trees down due to recent storm damage, please notify him at 255-7035.
- **Planning & Development** – Chair Getchell announced that Shakeeb Shariff had left the COJ. Chair Getchell introduced Gary Kresel and thanked him for coming to the meeting on short notice as the Planning Department’s interim representative.
- **Parks & Recreation** – Brian Burket reported:
 - Huguenot Park – Zones 11 and 12 are temporarily closed to vehicles because of the sea bird chicks. Pedestrians are permitted in the area. Vehicles may go around on the cove side.
 - The Carter boat ramp was in the news. It has been patched and reopened. It can be used by certain types of boats.
 - The Harbor View boat ramp reopened.
 - Chair Getchell commented on the excellent work performed by Tera Meeks, Division Chief, Waterfront Management and Programming, during the June 13 meeting of the Jacksonville Waterways Commission.
- Other:
 - **National Park Service** – Shauna Allen reported:
 - Kingsley Plantation hosted a Public Archeology Day on June 9.
 - The Archeology Field School will take place at Cedar Point on June 25 – June 29 and July 9 - July 13, 2012. Residents are encouraged to visit the dig-sites.
 - Staff members are planning and working towards a tram tour at Kingsley Plantation. The process is taking longer than planned. Civic engagement is planned for later this summer. She will send the announcement via Mary Beth Ridderman’s e-mail distribution list.

4. Presentations –

- State Representative Janet Atkins provided an Economic and Legislative Report.
 - She has served since 2008 and each year there has been a budget shortfall. Florida’s unemployment rates are higher than the national average for unemployment. It is significant that unemployment has remained high over an extended period of time. By comparison, North Florida is faring pretty well.
 - The federal government provides funding for several programs, but each year it is less.
 - The new district boundaries were briefly discussed.
 - Concerns were expressed about rising health care costs and the costs of indigent health care.
 - Concerns were expressed about the small amount of funding for education.
 - Representative Atkins says the most important part of her job is taking care of people her district.
 - Chair Getchell thanked Representative Atkins for her presentation.
 - Representative Atkins may be contacted at 723-5300
- State Representative Lake Ray presented a Legislative Update.
 - He works with Representative Atkins on the Delegation.
 - He discussed recent legislation related to transportation which provides \$165 million that will fund ports, intermodal transportation, Florida Seaports (FSAC), strategic initiative programs and capital improvement programs. \$100 million is in reoccurring money to support logistics improvements.
 - A Freight Mobility Strategic plan will protect Florida’s ports from other ports. The concept is a “Gateway” port, bringing in goods and shipping them to other areas of the U.S, utilizing rail and road infrastructure. Fifty percent of goods consumed by FL residents are shipped to Florida from other ports. This represents jobs lost.
 - Rail locations were discussed: Cecil Commerce Center, Westside Rail Yards, Lake City, Nassau County - North of Baldwin.
 - Representative Ray announced the new boundaries removed his district from Duval County, but he intends to come back to Duval and to the CPAC because he has a deep regard for North CPAC residents. He expressed his sincere appreciation for the CPAC’s support. He said it has been an honor to serve the North CPAC.
- Milton Locklear, N. FL Transportation Planning Organization presented the Transportation Improvement Program (TIP) for Fiscal Years 2012/13 – 2016/17.
 - The TIP is a five-year program. Several projects are planned for the North District and public involvement is needed. June 14 is the approval date for these and other projects:
 - 2123792 – Purchasing right-of-way for (future) West Branch Bridge replacement.

- 4269631 – Resurfacing Busch Drive from I-95 to U.S. 17.
- 4284131 – Dames Point Bridge rehabilitation, resurfacing to begin 2013-2014.
- 4287031 – Dunn Avenue resurfacing.
- 4273291 – Dunn Avenue intersection modification West of Garden Boulevard/East of Walgreens.
- 4269661 – Dunn Avenue resurfacing from US 1 – I-295.
- 4244231 – Sisters Creek Bridge rehabilitation
- Project information is available at www.northfloridatpo.com or 904-306-7500.

5. Chair's Report – Chair Mike Getchell reported:

- Mayor Alvin Brown will be the honored guest speaker at the August 8 meeting. Mayor Brown has visited the Southeast CPAC, the Greater Arlington Beaches CPAC and the Urban Core CPAC. He is scheduled to visit every CPAC.
- The Folio featured Council Member Holt's response regarding a previously published comment in Bouquets and Brickbats. Council Member Holt explained that Bill 2012-297 re-appropriates funds set aside from CRA funds to build the First Coast Pool. Council Member Holt's response explained that the First Coast High School is not in the CRA.

6. Elected Officials Reports - City Council Executive Assistant, Donna Barrow, stated that City Council Member Lumb sends his regards and that if District 6 needs anything, please contact him at (904) 630-1387 or rlumb@coj.net.

7. Subcommittee/Liaison Reports

- **LUZ (Land Use and Zoning)/Governmental Affairs** – Tom Ruffin and Dick Berry led this portion of the meeting. The following items were discussed or voted upon:

2012 – 0297	Disapprove	The bill appropriates \$4,363,190 from the First Coast High School Swimming Pool account to an as-yet unidentified account for the North Florida Transportation Planning Organization (TPO) to fund a Braddock/JIA Future Rail Corridor Assessment (\$100,000) and to place \$4,263,190 into a reserve fund for the future construction of a new North Access Road connector between Airport Road and Pecan Park Road adjacent to Jacksonville International Airport. The bill provides that the appropriated funds may be carried over to the succeeding fiscal year.
2012 – 0329	Approve	Change the future land use designation from Residential-Professional-Institutional (RPI) district to Community/General Commercial (CGC) on approximately 0.79± of an acre of land located in council district 7 on Mar Vic Lane between Dunn Avenue and Biscayne Boulevard and owned by Daniel K. Dupree.
2012 – 0330	Approve	Rezone approximately 0.79± of an acre of land located in council district 7 on Mar Vic Lane between Mar Vic Lane and the corner of Dunn Avenue (owned by Daniel K. Dupree), as described herein, from Commercial Office (CO) District to Planned Unit Development (PUD).
2012 – 0334-	Approve	Change the future land use designation from Low Density Residential (LDR) District to Medium Density Residential (MDR) on approximately 6.06± acres of land at Duval Station Road and Hollings Road; and one unnumbered parcel on 7 th Street east and one unnumbered parcel on Majestic Court between Chadwick Drive and Hollings Street.
2010 – 0335	Approve	Rezone approximately 6.06± acres of land at Duval Station Road and Hollings Road; and one unnumbered parcel on 7 th Street east and one unnumbered parcel on Majestic Court between Chadwick Drive and Hollings Street from Residential Low Density-60 (RLD-60) and Residential Rural-acre (RR-acre) districts to a Planned Unit Development. A very long discussion was held on this issue. Vote 10-2.
n/a	n/a	North Access Rd Property Owners' Notification - Subsequent Public Hearing SR 243 (JIA North Access Rd) Financial Project ID: 209399-6. Date: June 26, 2012: Time – 5 pm to 6:30 pm Open House; 6:30 pm Comment Period: Location – Hampton Inn & Suite, Airport. Provided for information only.

- A concern was expressed regarding apartment occupancy rates in the area.
- A concern was expressed regarding possible public funding and subsequent subsidized rentals for proposed new apartments. Ms. Hipps assured the resident that the project is privately funded and will not offer subsidized rentals.
- A concern was expressed regarding the effect of apartments on property values. A member commented that the property is currently a mobile home park.
- A concern was expressed about possible drainage and flooding problems that may be caused by increased building. Ms. Hipps assured the resident that drainage ponds are planned.
- Governmental Affairs Acting Chair Ruffin commended Alberta Hipps, Hipps Group, for being very cooperative with the community's recommended changes for # 2012-0334 and 2012-0335.
- Mr. Berry announced: June 26, 2012 is the North Access Road property owners' notification meeting. JAA and FDOT maps are on display in the Highlands Library.
- The next Governmental Affairs meeting is July 5, 4 p.m. FSCJ North Campus, Room C-136.
- **Beautification/Parks/Environment** – No Subcommittee.

- **Membership** – Mr. Wagner reported there are no new members.
- **Transportation** – Richard Berry asked members to look at FDOT's St. Johns River Ferry survey which was forwarded by Mary Beth Ridderman.
- **Ad-Hoc:** None.
- **TRUE (Taxation, Revenue, and Utilization of Expenditures) Commission** – No representative. No report. A volunteer is needed.

8. Unfinished Business - none

- 9. New Business** – Mr. Berry announced a book has been published by the Jacksonville Historical Society: *The Broward Family from France to Florida, 1764-2011*. For more information, please visit <http://www.jaxhistory.com/Broward%20book.html>.

10. Public Comments/Announcements:

- A. Wellington Barlow announced that he is a candidate for Circuit Judge, Group 29.

- 11. Motion to Adjourn** - Mr. Ruffin made a motion for adjournment and Mr. Wagner seconded the motion. All were in favor. The meeting adjourned at 6:25 p.m.

NEXT MEETING: July 11, 2012 at 4:00 p.m.

Florida State College at Jacksonville, North Campus
4501 Capper Road, Room C-136

Summary prepared by Mary Beth Ridderman, Coordinator, Neighborhoods Department, 904-255-8260, marybeth@coj.net.

NEIGHBORHOODS DEPARTMENT
HOUSING AND COMMUNITY DEVELOPMENT DIVISION



North CPAC June 2012

Mary Beth Ridderman, Coordinator

- **Mayor's Office:** please put together a hurricane kit. Pack essentials like canned food, can openers, water, blankets and plenty of batteries in an easy to move storage bin or cooler. Visit JaxReady.org to find out more about weather alerts, special needs shelter registration and how to create a family plan. Download a new, free mobile device from the Apple Store or Google Play. The app gives instant updates on potential storm threats, weather patterns, evacuation information, bridge and road closures, and much more. This will help residents who may be affected when power is out and they have no other line of communication but a mobile device like a smartphone or an iPad. JaxReady was created by the city's Information Technologies Division and Emergency Preparedness Division at no additional cost to the taxpayer. For more information on how to use the app, visit this instructional video: http://youtu.be/vPp5ODK_rIE
- **Neighborhoods:** The Housing and Community Development Division offered a free HOA/Condo/Townhome and Board Member Certification Training on June 5. Thirty eight residents attended. Evaluations were good and residents asked for more training on various subjects. Plans are being discussed for future training.



Duval Extension Office: Camp Florida Friendly , (Ages 18 and up). June 13, 15, 20, 22 - Four- part series on horticultural subjects. Optional make and take worm bins & rain barrels. Register at <http://campfloridafriendly.eventbrite.com/> . Sign up for one or all 4 sessions. See website for fees or call

- **Jacksonville Children's Commission: Summer Camp-** Funded in-part by *The Jacksonville Journey* anti-crime initiative, the program will serve a total of 5,163 children in full-day, low-cost summer camps at 87 locations throughout the city. Camps will be provided by various youth-serving non-profit organizations in four to six-week long sessions, Monday through Friday, from 8:00 a.m.-5:00 p.m. Camps will run June 11 – Aug. 3. Dates vary by location. Open to Duval County children who are entering kindergarten this fall (must be 5 years-old by Sept. 1, 2012) through 15 years of age. All camps do not serve the entire age range. Children participating in the free/reduced lunch program, those who have documented special needs, recipients of the McKay Scholarship or Children First Florida Scholarship are eligible for seats at selected camps. More information about summer campership requirements, visit www.jaxkids.net



Jacksonville Public Library: Free Summer Reading Program, June 1 – Aug. 7. Themes "Dream Big READ!" for preschool and elementary age children and "Own the Night" for tweens and teens. Participants will explore the worlds of music, dance, art, books and more. Children and teens can earn a free book just by registering online and logging the books read. To be eligible, children from birth to 11 must read at least 10 books and children 12 to 18 must read at least six books. After Aug. 1, print out the book log on the registration site and show it to a librarian to pick out a free book. Limit one book per child, while supplies last. Wayne & Delores Weaver support the summer reading programs.

- **Veterans Affairs:**
 - Aug. 3 – Annual Veterans Job Fair connect veterans with 30 potential employers
 - Aug. 4 – Homeless Veterans Resource Fair offers free VA services, health screenings, haircuts/showers, food, clothing, shelter/housing information, debt management, substance abuse awareness and more.
 - For more information, call 630-3680.

- **Riverside Arts Market:** Needs volunteers in these areas: set up the market, water sales, booth sitters, greeters, closing the market and traffic directors. Shifts are available 8-12; 9-1; 10-2; 11-3; 1-5 or all day. Water is provided. For shifts 6 hours or longer, lunch is provided. This is a great way to earn community service hours, or to just meet new people in a great setting! To learn more, contact Torrie Parette at 389-2449 or torrie@riversideavondale.org.
- **Animal Care & Control:** Adopt kittens under 6 months of age for \$25 each. Adopt one, get one free. All kittens have initial vaccinations and have been spayed/neutered. Visit the shelter at 2020 Forest St. or call 630-2489 for more information.
- **Duval County Health: Precautions for nuisance wildlife:**
 1. **NEVER Feed Wild Animals**
Leaving food out attracts wildlife to your property. It is very important to remember to bring in your pets' food and water bowls.
 2. **Eliminate Unintentional Food Sources**
Barbeque grills and compost piles provide available food sources for wild animals. Be sure to clean your grill thoroughly and secure your compost pile to prevent unintentionally feeding them.
 3. **Secure Your Garbage**
Once animals associate your garbage with an easy meal, they will keep coming back. Make sure your garbage is placed in cans with tight fitting lids, and consider using a strap to further keep them in place.
 4. **Pick Up Fallen Fruit**
If you have fruit trees, be careful to pick up all the fruit that has fallen from the tree. These are a natural source of food to many animals, and will bring them into your yard.
 5. **Avoid Creating Shelters**
Some animals will burrow under a shed or other outbuilding, or find a way inside to sleep during the day or have shelter. Make sure your buildings are secured, and inspect them regularly. Keep your yard free of brush and low branches that can create good hiding spots.
 6. **Enlist the Neighbors**
Keeping wild animals away from residential areas is a community effort. If even one resident decides to feed the animals, then they will hang around.
 - o Florida has no nuisance wildlife removal program. *If residents want to have an animal removed, it must be done at the resident's expense.* State rules regarding relocating animals and a list of registered wildlife trappers are available at myfwc.com.
 - o For questions about an animal's behavior, contact the Florida Fish and Wildlife Conservation Commission at 1-386-758-0525 to speak to a wildlife biologist.
 - o If someone has been bitten, scratched or exposed to the body fluids of a wild animal, (such as a raccoon, bat, skunk or fox) contact the Duval County Health Department at 253-1280. After hours or on weekends, call JSO at 630-0500.
- **Cummer Museum of Art and Gardens** is displaying the work of Vietnam veteran Richard Chamberlain until July 8. Admission is free on Tuesday evenings.



- **Jacksonville Fire and Rescue Department** distributes its ON SCENE employee newsletter to the department's 1,200 uniformed personnel, civilian employees, and numerous retirees by e-mail several times per year. While the content is employee-specific, it offers a glimpse of a variety of activities within the department. If you would like to be placed on the email distribution list, please send an email request to onscene@coj.net.
- **Phone Numbers –**
 - o City Link 630-CITY (630-2489). Please provide the exact address and obtain a tracking number to follow up.
 - o City Council meetings are on the 2nd and 4th Tuesday of each month at 5 p.m. City Council Chambers, 117 W. Duval St. 32202. For information contact 630-1377.
 - o Duval County School Board meetings are on the 1st Tuesday of each month at 6 p.m., Board Room, 1701 Prudential Dr., 32207. For information call 390-2000 or Duval County Public Schools www.duvalschools.org
 - o Jacksonville Public Library - 303 N. Laura St, Jacksonville, FL 32202 – 630-2665 or www.jaxpubliclibrary.org
 - o JSO - Police Non-Emergency 630-0500-First Coast Crime Stoppers – 1-866-845-TIPS (8477) to report a crime anonymously
 - o JEA – 665-6000 – If a street light is out please get the number on the pole to report it
 - o Duval Extension Office – 387-8850 or 1010 N. McDuff Ave. www.coj.net (Search Extension Office)

214 North Hogan Street, 8th Floor | Jacksonville, FL 32202 | Phone: 904.255-8200 | Fax: 904.255-8280 | www.coj.net

CPAC Governmental Affairs

Minutes

June 7, 2012

The meeting held at FSCJ North Campus, Room C136, was called to order 4:00 pm. Attendance as indicated below:

Members: (Present) T. Ruffin R. Berry J. Stuart M. Thompson J. Bray
(Absent) D. Mathias H. Wagner M. Getchell R. Neidinger Planning Dept Rep.

Visitors: Harry Williams, Sr. Harrison Hardaway, Jr. Daniel Dupree Patty Griffin Alberta Hipps

Old Business: None

New Business:

2012 – 0297 - The bill appropriates \$4,363,190 from the First Coast High School Swimming Pool account to an as-yet unidentified account for the North Florida Transportation Planning Organization (TPO) to fund a Braddock/JIA Future Rail Corridor Assessment (\$100,000) and to place \$4,263,190 into a reserve fund for the future construction of a new North Access Road connector between Airport Road and Pecan Park Road adjacent to Jacksonville International Airport. The bill provides that the appropriated funds may be carried over to the succeeding fiscal year. **A motion to recommend disapproval was made by Mr. Stuart and seconded by Mr. Berry. The motion passed by a 5 to 0 vote.**

2012 – 0329 – Change the future land use designation from Residential-Professional-institutional (RPI) district to Community/General Commercial (CGC) on approximately 0.79± of an acre of land located in council district 7 on Mar Vic Lane between Dunn Avenue and Biscayne Boulevard and owned by Daniel K. Dupree. **A motion to recommend approval was made by Mr. Stuart and seconded by Mrs. Thompson. The motion passed by a 5 to 0 vote.**

2012 – 0330 - Rezone approximately 0.79+ of an acre of land located in council district 7 on Mar Vic Lane between Mar Vic Lane and the corner of Dunn Avenue (owned by Daniel K. Dupree), as described herein, from Commercial Office (CO) District to Planned Unit Development (PUD). **A motion to recommend approval was made by Mrs. Thompson and seconded by Mr. Stuart. The motion passed by a 5 to 0 vote.**

2012 – 0334 - Change the future land use designation from Low Density Residential (LDR) District to Medium Density Residential (MDR) on approximately 6.06± acres of land at Duval Station Road and Hollings Road; and one unnumbered parcel on 7th Street east and one unnumbered parcel on Majestic Court between Chadwick Drive and Hollings Street. (Owned by First Coast land Development, Inc.) **A motion to recommend approval was made by Mr. Berry and seconded by Mr. Stuart. The motion passed by a 5 to 0 vote.**

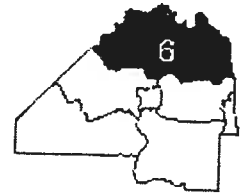
2010 – 0335 – Rezone approximately 6.06± acres of land at Duval Station Road and Hollings Road; and one unnumbered parcel on 7th Street east and one unnumbered parcel on Majestic Court between Chadwick Drive and Hollings Street from Residential Low Density-60 (RLD-60) and Residential Rural-acre (RR-acre) districts to a Planned Unit Development. **A motion to recommend approval was made by Mr. Stuart and seconded by Mr. Berry. The motion passed by a 5 to 0 vote.**

North Access Rd Property Owners' Notification - Subsequent Public Hearing SR 243 (JIA North Access Rd) Financial Project ID: 209399-6. Date: June 26, 2012: Time – 5 pm to 6:30 pm Open House; 6:30 pm Comment Period: Location – Hampton Inn & Suite, Airport. Provided for information only.

New Business from the floor: None.

Comments/Adjournment: No Comments. The meeting was adjourned 5:25 pm.

North District
Citizens Planning Advisory Committee
Chair: Mike Getchell



June 14, 2012

Honorable Reginald Brown
Land Use & Zoning Committee
177 West Duval Street
City Hall at St. James, Suite 425
Jacksonville, FL 32202

Re.: Bill # 2012-0334

Dear Council Member Brown:

The referenced bill has been reviewed by the North District CPAC. We have no objections to a change in the future use designation from Low Density Residential (RLD) to Medium Density Residential (MDR) of approximately 6.06 acres of land located on Duval Station Road and Hollings Road; and one unnumbered parcel on 7th Street East; and one unnumbered parcel on Majestic Court between Chadwick Drive and Hollings Road.

Therefore, members of the North CPAC recommend that this bill be approved.

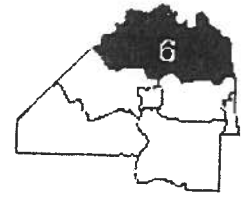
Respectfully submitted,


Mike Getchell
Chairman

Cc: City Council Members Clay Yarbrough, William Bishop, Richard Clark, E. Denise Lee, John R. Crescimbeni, Warren Jones, Stephen Joost, Reginald Brown, Dr. Johnny Gaffney, Don Redman, Lori N. Boyer, Matt Schellenberg, Ray Holt, Doyle Carter, Bill Gulliford, Jim Love, Kimberly Daniels, Greg Anderson, Robin Lumb

E-copy: Council Legislative Services: Cheryl Brown, Director/Council Secretary; Dana Farris, Chief; Planning Commission: Lisa King; Planning Department: Gary Kresel; Neighborhoods Department: Terrance Ashanta-Barker, Director; Elaine Spencer, Chief; Kenny Logsdon, Planner

North District
Citizens Planning Advisory Committee
Chair: Mike Getchell



June 14, 2012

Honorable Reginald Brown
Land Use & Zoning Committee
177 West Duval Street
City Hall at St. James, Suite 425
Jacksonville, FL 32202

Re.: Bill # 2012-0330

Dear Council Member Brown:

The referenced bill has been reviewed by the North District CPAC. We have no objections to the rezoning from Commercial Office (CO) to a Planned Unit Development (PUD) of the approximately 0.79 acre of land located on Mar Vic Lane at Dunn Avenue.

Therefore, members of the North CPAC recommend that this bill be approved.

Respectfully submitted,

Mike Getchell

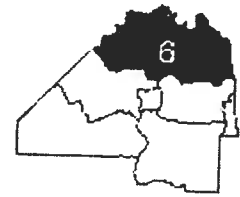
MG

Mike Getchell
Chairman

Cc: City Council Members Clay Yarbrough, William Bishop, Richard Clark, E. Denise Lee, John R. Crescimbeni, Warren Jones, Stephen Joost, Reginald Brown, Dr. Johnny Gaffney, Don Redman, Lori N. Boyer, Matt Schellenberg, Ray Holt, Doyle Carter, Bill Gulliford, Jim Love, Kimberly Daniels, Greg Anderson, Robin Lumb

E-copy: Council Legislative Services: Cheryl Brown, Director/Council Secretary; Dana Farris, Chief; Planning Commission: Lisa King; Planning Department: Gary Kresel; Neighborhoods Department: Terrance Ashanta-Barker, Director; Neighborhoods Department: Elaine Spencer, Chief; Neighborhoods Department, Kenny Logsdon

North District
Citizens Planning Advisory Committee
Chair: Mike Getchell



June 14, 2012

Honorable Reginald Brown
Land Use & Zoning Committee
177 West Duval Street
City Hall at St. James, Suite 425
Jacksonville, FL 32202

Re.: Bill # 2012-0335

Dear Council Member Brown:

The referenced bill has been reviewed by the North District CPAC and we have no objections to the rezoning from Residential Low Density-60 (RLD-60) to a Planned Unit Development (PUD) of the approximately 6.06 acres of land located on Duval Station Road and Hollings Road; and one unnumbered parcel on 7th Street East and one unnumbered parcel on Majestic Court between Chadwick Drive and Hollings Road.

We requested and the owners agreed to the following:

1. No financially subsidized tenants.
2. Owner operated.
3. Units to be positioned to provide maximum privacy to adjacent communities.
4. Units to be two stories or less.

Therefore, members of the North CPAC recommend that this bill be approved.

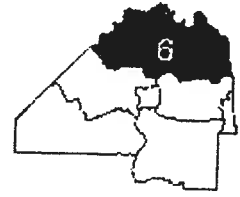
Respectfully submitted,


 Mike Getchell
Chairman

Cc: City Council Members Clay Yarbrough, William Bishop, Richard Clark, E. Denise Lee, John R. Crescimbeni, Warren Jones, Stephen Joost, Reginald Brown, Dr. Johnny Gaffney, Don Redman, Lori N. Boyer, Matt Schellenberg, Ray Holt, Doyle Carter, Bill Gulliford, Jim Love, Kimberly Daniels, Greg Anderson, Robin Lumb

E-copy: Council Legislative Services: Cheryl Brown, Director/Council Secretary; Dana Farris, Chief; Planning Commission: Lisa King; Planning Department: Gary Kresel; Neighborhoods Department: Terrance Ashanta-Barker, Director; Elaine Spencer, Chief; Kenny Logsdon, Planner

North District
Citizens Planning Advisory Committee
Chair: Mike Getchell



June 14, 2012

Honorable Reginald Brown
Land Use & Zoning Committee
177 West Duval Street
City Hall at St. James, Suite 425
Jacksonville, FL 32202

Re.: Bill # 2012-0329

Dear Council Member Brown:

The referenced bill has been reviewed by the North District CPAC and we have no objections to the change in the future land use designation from Residential Professional Institution (RPI) to Community /General Commercial (CGC) on the approximately 0.79 acre of land located on Mar Vic Lane at Dunn Avenue.

Therefore, members of the North CPAC recommend that this bill be approved.

Respectfully submitted,


Mike Getchell
Chairman

Cc: City Council Members Clay Yarbrough, William Bishop, Richard Clark, E. Denise Lee, John R. Crescimbeni, Warren Jones, Stephen Joost, Reginald Brown, Dr. Johnny Gaffney, Don Redman, Lori N. Boyer, Matt Schellenberg, Ray Holt, Doyle Carter, Bill Gulliford, Jim Love, Kimberly Daniels, Greg Anderson, Robin Lumb

E-copy: Council Legislative Services: Cheryl Brown, Director/Council Secretary; Dana Farris, Chief; Planning Commission: Lisa King; Planning Department: Gary Kresel; Neighborhoods Department: Terrance Ashanta-Barker, Director; Elaine Spencer, Chief; Kenny Logsdon, Planner

**Duval County
Extension****A NEW LEAF**

Volume 12, Issue 3

May/June 2012

Inside this Issue

Things to do in May and June	Page 2
What to Plant in May and June	Page 3
Thinking about starting a community garden?	Page 4
Deciduous Fruit Options for Landscapes	Page 5
Those Pesky Armadillos	Page 6
Drought, Stress and Trees	Page 7
Deciduous Fruit Continued	Page 8

Sign Up Now for Master Gardener Classes

It's that time again. Master Gardener classes are gearing up once again in Northeast Florida. If you have an interest in gardening and serving your community, this class may be for you. Master Gardeners receive in-depth training in horticulture and in exchange agree to give 75 hours of volunteer service helping their local county extension office.

Training will include topics such as basic plant science, entomology, plant pathology, nematology, vegetable gardening, fruit culture, woody ornamentals, lawn management, plants propagation, Florida-Friendly Landscaping, and more.



Classes are on Wednesdays from 9:30am to 3:30pm starting on August 1st through October 3rd. Most classes are at the Duval County Extension Office except two that are held in Nassau County. You must live in Duval County to apply for our program. If you live outside of Duval County, contact your Extension Office. The cost to attend is \$55. If you are interested, call or email Becky to request an application form at beckyd@coj.net or 255-7450. Deadline June 22nd.

Upcoming Classes

May 5 - Kiwi Pineapple Orange Jam Workshop, from 9am to Noon or 1pm to 4pm. \$20 fee to attend, call Jeannie to register at 255-7450.

May 22 - Irrigation Retrofitting Workshop, from 10am to noon. Learn how to install or convert a shrub bed or garden to low volume irrigation. Save water and \$\$ in your landscape. \$5 fee to attend, Call Becky at 255-7450 to register.

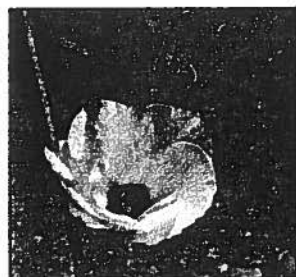
Wednesdays and Fridays, June 13, 15, 20, 22 - 9:30am - 2:00pm - Camp Florida-Friendly (adults only), Duval County Extension, 1010 N. McDuff Ave. \$5 per session or \$20 for all four sessions, optional costs for session 2 - \$10 for Vermicompost Bin,

Session 4 - \$40 for Rain Barrel. For details and to pre-register call Becky at 255-7450.

4-H Horticulture Youth Camps at Mandarin Garden Club. Wild World of Nature is June 25 to 28, 9am to 12:30pm for ages 8 to 10; cost \$50. Call Gaye at 255-7450 to register.

June 2nd - Eating and Growing Seasonally Workshop, Food demo/sampling using seasonal produce and what your options are in the vegetable garden during the summer. Cost \$10.. Duval County. Pre-registration required with Jeannie Crosby @ 255-7450.

June 16th - Community Garden Workshop, see page 4.



Things to do in May/June By Terry DeValle

Flowers

- **Space out flowering plants** to increase air circulation going into hot, humid months.
- **Remove spent flowers** to encourage more blooms and reduce disease problems.



- **Watch for downy mildew** on impatiens. Check young leaves for yellowing or speckled look. Underside of leaves will have downy-like growth

and leaves and flowers will drop off leaving bare stems. Best control is to remove plants immediately as it spreads rapidly. It should not affect other flowering plants. Inspect plants carefully before purchasing to insure they are disease free.

potassium and low phosphorous like a 16-2-16. Find one with 30% or more slow release nitrogen to avoid quick growth.

- ♦ **Stay ahead of the weeds** by hand pulling or spot treating as needed. For information on weed control, go to <http://edis.ifas.ufl.edu/EP141>.

Trees & Shrubs

- **Prune and fertilize** spring flowering trees and shrubs after bloom.
- **Scout plants frequently for pest problems.** Check plants for aphids, thrips, scale, lace bugs and spider mites. Lace bugs, thrips, and spider mites are problems during hot, dry weather.
- **Fertilize palms with a palm fertilizer** that has an 8N-2P-12K +4Mg with micronutrients. 100% of the N, K and Mg should be in a water-insoluble form. Broadcast one pound of fertilizer per 100 square feet of canopy area.

Fruits and Nuts

- ♦ **Harvest blueberries** in May and June. Visit some of the U-pick growers if you are not growing your own. Refer to www.florida-agriculture.com/consumers/upick.htm to find local growers.
- ♦ **Harvest peaches, nectarines, plums and strawberries** as soon as they are ready to beat the birds and other critters.
- ♦ **Fertilize citrus** with a citrus fertilizer and provide water during dry weather to prevent splitting once the rains return.

Lawns

- **Plant/plug lawns** now to fill in cold damaged areas. Go to <http://edis.ifas.ufl.edu/lh013> for info.
- **Calibrate the sprinkler system** to water between 1/2" and 3/4" each time you water. Follow guidelines: odd # addresses on Wednesday & Saturday and even # addresses on Thursday & Sunday. No watering from 10am to 4pm.
- **Check brown spots** in lawns for irrigation problems or chinch bugs.
- **Mow at the appropriate height** to help control weeds and develop a deep root system. Mow Bahia at 3-4", Bermuda at 0.5-1.5", Centipede at 1.5-2", St. Augustine standards at 3.5-4", St. Augustine dwarfs at 2.0-2.5" & Zoysia at 1.0-3.0".
- **Apply second fertilizer application** to St. Augustine or Zoysia lawns. Use a fertilizer with equal or near equal amounts of nitrogen and

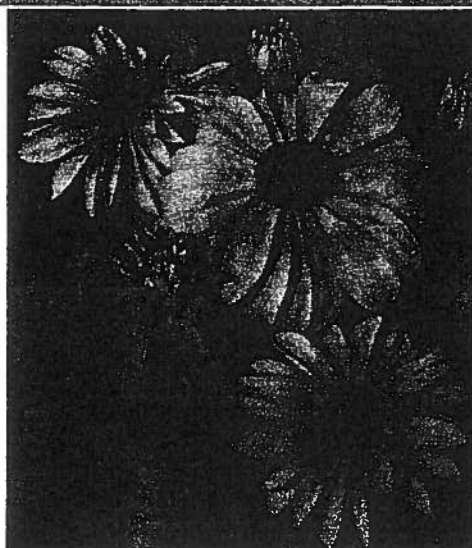
Vegetable Garden

- **Watch for late blight** on tomatoes. This has been a problem in NE Florida due to cool nights and mild days. Dark lesions form on stems and white fungal growth will occur during moist conditions. It can be explosive and moves quickly with wind so remove plants quickly.
- **Plant heat tolerant herbs** like basil, Mexican tarragon and rosemary.
- **Scout vegetables for insects frequently**, especially caterpillars. For large caterpillars, the best means of control is to handpick. Small caterpillars can be controlled with Bt (Dipel or Thuricide).
- **Harvest vegetables** regularly to keep plants producing.
- **Use low volume irrigation** like soaker hoses to supply adequate water during fruit production. This will help to conserve water, adhere to irrigation guidelines and reduce disease problems.



Leaf lesions top photo
Stem lesions bottom photo

What to Plant in May/June By Terry DeValle



Rudbeckia hirta 'Tiger Eye'

Replace cool season plants with others that can take the heat. Annuals for May include blue daze, calliopsis, celosia, coleus, crossandra, exacum, gaillardia, gazania, hollyhock, impatiens, kalanchoe, mari-gold, milkweed, nicotiana, ornamental pepper, pentas, portulaca, rudbeckia, salvia, thunbergia, torenia, verbena, vinca (periwinkle) and zinnia. In June it's too late to plant those listed above that are underlined during our normal summers. To keep annuals blooming, fertilize monthly with a standard fertilizer with nitrogen and potassium, but low phosphorous (middle number) or use a slow release fertilizer that will last all

summer into fall.

Don't forget perennials for adding easy color. Salvias, coneflowers, bulbine, stokesia, gaura, portweed, plumbago, firecracker plant, firebush, firespike, verbena, lantana and many others are all great at providing color and are less maintenance than many annuals.

Bulb-type plants for May include achimenes, allium, alstroemeria, Aztec lily, begonia, blood lily, caladium, daylily, gladiolus, kaffir lily, moraea (African lily), spider lily, tiger flower, walking iris, and watsonia. Don't plant those that are underlined in June, but add to the list the butterfly lily.

Vegetables to plant include lima beans, eggplant, mustard (May only), okra, peanuts, southern peas, and sweet potatoes. For a list of recommended varieties, go to <http://edis.ifas.ufl.edu/VH021>. Sidedress vegetables with a 6-6-6 or 10-10-10 to keep them productive by placing fertilizer in a band 1" deep and 6 to 8" away from plants. Harvest cool season crops like carrots, onions and potatoes. Check for ripening strawberries daily to beat the birds and insects.

Prostrate Japanese Plum Yew By Terry DeValle

The prostrate Japanese plum yew, *Cephalotaxus harringtonia* 'Prostrata', is one of the most carefree plants in my landscape. Hence, it is one of my favorites. This low growing evergreen shrub or groundcover is a perfect foundation plant that matures at a height of two to three feet tall with a matching spread. It is ideal when a low growing plants is required that will not shade windows or require constant pruning to control the height.

Leaves are dark green and glossy while the tips are often lighter in color when new growth emerges. Leaves are needle like so are very similar to leaves of a Christmas tree like a fir.



Plants are low and mounding. Branches grow up and then cascade out. They look great when planted in groups.



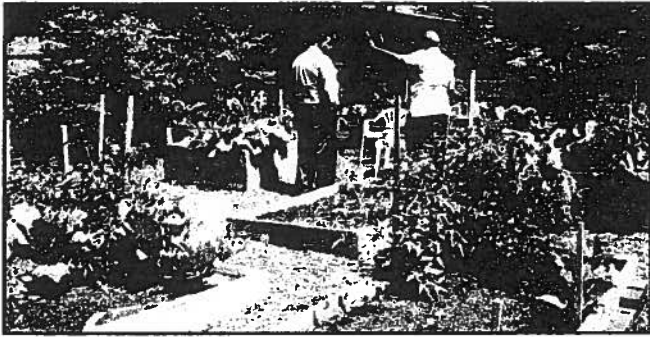
Plant in partial shade or shade. Mine thrives in morning sun with an eastern exposure with morning sun. In states north of us they grow in full sun but here they need some shade during the heat of the day. They are drought tolerant and prefer well drained soil but may require irrigation during severe drought. In addition they are deer resistant and have moderate salt tolerance so it can be planted at the beaches.

Thinking About Starting a Community Garden?

Mary Puckett, Urban Gardening Program

Community Gardens offer city dwellers of all ages and abilities access to land where they can grow their own produce.

With food costs rising in an uncertain economic climate, families are finding fresh vegetables and fruits less affordable. Community gardens not only provide fresh produce, but a place where neighbors and communities can come together.



"N Metro Educational and Nutritional Garden"

Many children are unaware of where vegetables come from, cannot identify them correctly, and have no interest in tasting them. It is amazing to watch children working in the garden and see their excitement in harvesting their own strawberries, pulling potatoes and carrots out of the ground, snacking on sugar snaps right off of the vine and even enjoying raw cauliflower with a side of ranch dressing. A great way to get children excited about eating vegetables is to let them grow their own.

There is also a legitimate concern in how mass-marketed vegetables are being grown. Growing organically is becoming more of a priority as is buying through local farmers markets and by investing in our local small farms.

Between the increase in participation at our vegetable workshops, as well as, through phone calls and surveys, I am aware of the growing number of people breaking ground in their own back yards. They are signing onto existing community gardens, or finding out how to go about developing their own community garden in order to grow vegetables for themselves and share with those having a greater need. Most community gardens are often developed by local people in a voluntary capacity.

We are offering a workshop on what you need to know to have a successful community garden.

Please join us at the Duval County Extension Office for a "FREE" workshop:

"What You Need to Know and May Not have Considered When it Comes to Community Gardens"

June 16th from 9AM - 12:30PM

1010 N McDuff Avenue

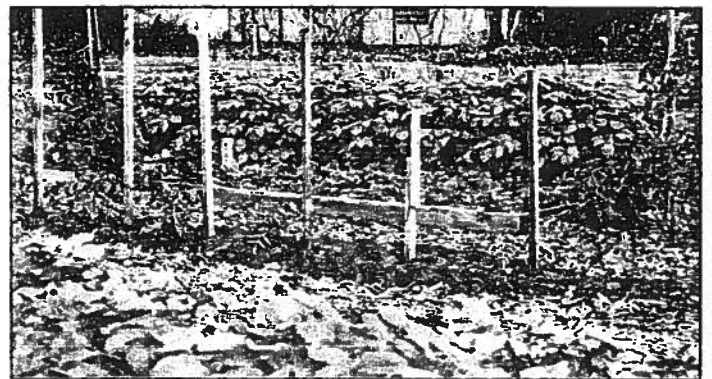
Call Jeannie Crosby at 255-7450 to register

In addition to understanding the basics of getting started, there will be an overview of basic regulatory information related to zoning laws as well as the regulations for growing and selling produce in Florida.

Curious what quasi-community gardens are all about or "Spin Farming" which is a national movement designed to connect folks who want to garden with folks who have available land?

How about funding? This is always a concern. Come and find out what it takes to be successful in forming a "Non-Profit", fund raising and/or writing grants.

I hope you take advantage of this excellent opportunity and look forward to seeing you on June 16th!



"Superior Garden" in March

Deciduous Fruit Options for Landscapes by Terry DeValle

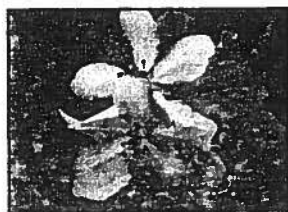
When considering adding new plants to the landscape, think about a dual purpose plant. What about a shade tree that produces nuts or a shrub that produces berries. Before you start dragging plants home from the nursery, do your homework first.

Site Selection: Here is a list of criteria.

- ♦ Fruit require an open sunny spot with a minimum of six hours of direct light and good air circulation.
- ♦ Water source must be close by. Soaker hoses or low volume irrigation are preferred because they keep water off the foliage thereby reducing diseases.
- ♦ Soil must be well drained to avoid root diseases. Avoid low areas or spots where water puddles.
- ♦ Soil pH should be slightly acid, around 6.0 to 6.5, with the exception of blueberries which grow best in soil with a pH of 4.0 to 5.3.
- ♦ Is there adequate space for the plant? Find out how big the plant/variety will get at maturity.

Selecting Varieties: Select varieties adapted to our area. Deciduous fruit, also referred to as temperate fruit, have chilling requirements. Chilling hours are hours below 45°F and above 32°F while plants are dormant. Normal chilling hours for our area range from 420 to 540. If a variety is planted with low chilling hours, the plant will bloom too early and flowers/fruit will likely be damaged by freezes. Varieties with high chilling hours will never or rarely bear fruit here.

Purchase plants from FL nurseries or the southeastern U.S. They will be better adapted to our area. Here are some of the deciduous fruit and varieties recommended by the University of Florida for our area.

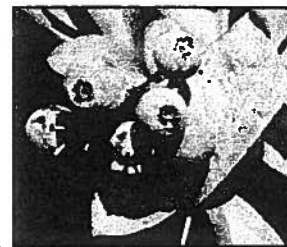


Apple flowers

Apples: Varieties include 'Anna', 'Dorsett Golden', and 'Tropic Sweet'. Plant two varieties for pollination and good fruit set. Spacing is 15' by 20'.

Blackberries: Early trailing types (dewberries) include 'Flordagrind' and 'Oklawaha'; plant one of each for cross pollination. Later fruiting semi-erect types are 'Brazos', 'Cheyenne', 'Comanche', and 'Cherokee', 'Navaho' and 'Arapaho'. Semi-erect types are self-fruitful so only one variety is needed. 'Navaho' and 'Arapaho' are thornless. Spacing is 5' by 12'.

Blueberries: Rabbiteye blueberries are native to Florida and better adapted to north Florida than Highbush varieties. Examples of early rabbiteye varieties are



'Beckyblue', 'Bonita', 'Woodard' and 'Climax'. Mid to late varieties are 'Brightwell', 'Powderblue', 'Premier' and 'Tifblue'. Plant two or more varieties within the group (early vs. mid to late) for cross pollination. Spacing is 6' by 12'.

Figs: Varieties include 'Brown Turkey', 'Celeste', 'Green Ischia', 'Alma' and 'Magnolia'. Spacing is 10' by 12'.

Muscadine Grapes: Bronze fruiting varieties are 'Fry*', 'Carlos', 'Welder', 'Tara', 'Summit*', 'Sweet Jenny*', 'Pam*', 'Granny Val', and 'Doreen'. Black fruiting varieties are 'Noble', 'Southern Home', 'Nesbitt', 'Black Beauty*', 'Black Fry*', 'Polyanna', and 'Supreme*'. Varieties with * are not self fruitful and

should be planted with at least one self-fruitful variety. Spacing is 15' by 10'.

Peaches, Plums and

Nectarines: Medium chill varieties for our area include

'Flordadawn', 'Flordaking', 'Flordacrest', 'Gulfking', 'Gulfcrest', and 'Gulfprince'.

The only nectarine is 'Suncoast'. Spacing is 15' by 20'. Newer plum varieties include the Gulf series: 'Gulf Ruby', 'Gulfbeauty', 'Gulfblaze' and 'Gulfrose' and all require a pollinator. Spacing is 10' by 20'.

Pear: Varieties are 'Flordahome', 'Pineapple' and 'Hood'. Use 'Hood' to pollinate the other two. Spacing is 20' by 20'.

Pecans: Varieties include 'Elliot', 'Stuart', 'Curtis', and 'Moreland'. 'Elliot' and 'Moreland' are considered to have higher nut quality and all are relatively resistant to scab. Plant 2 or more varieties for cross pollination. Spacing is 60' by 60'.



Plum 'Gulfbeauty'



Continued on page 8.

Those Pesky Armadillos By Brad Burbaugh, Natural Resources Agent



Annoying armadillos burying holes in open areas or in residential sites is a common problem for many of our residents. This article will provide you with some quick facts about these not so friendly visitors and give you some ideas from the experts in the field about their control.

Problems: The most notable armadillo damage occurs as a result of their rooting in lawns, vegetable gardens, and flower beds. Armadillos live in dens and some damage also can be caused by their burrowing under foundations, driveways, and other structures.

Understanding the Problems: More than 90 percent of the armadillo's diet is made up of insects and their larvae that live in the soil. They also feed on earthworms, scorpions, spiders, and other invertebrates. Armadillos are most active at night, when they make small cone-shaped holes in the ground while rooting for food.

Prevention and Control Methods: There are no successful repellents, toxicants, or fumigants registered for armadillos. The use of insecticides to reduce food sources also has not been proven to stop armadillo digging. A fence slanted outward at a 40° angle, with a portion buried may be a somewhat effective barrier under certain conditions. Shooting is another effective method to eliminate nuisance armadillos. However, discharging firearms is illegal in some areas and it also is illegal to use artificial lights other than outdoor house lights to aid in shooting at night. Armadillo meat is edible if properly prepared.

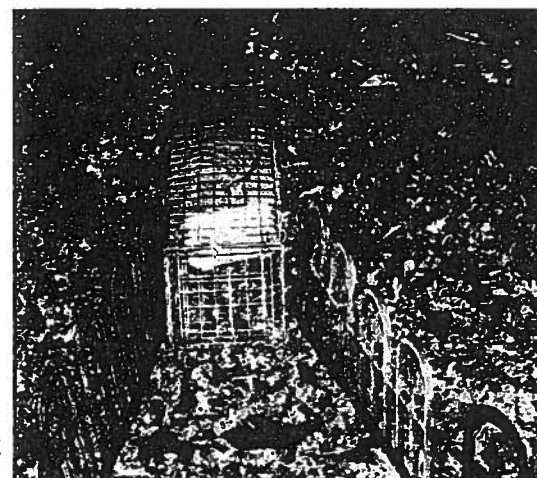
Several live-trapping techniques can be used to capture armadillos as they come out of their burrows. One is to firmly insert a 6-inch diameter PVC pipe into the entrance of an active burrow. Regular-sized armadillos will get stuck in the pipe as they try to exit. A nylon throw-net used for fishing can also be staked

down so it covers the burrow entrance. Armadillos will get tangled in the net as they emerge. Another trapping technique involves burying a large bucket (larger than 5-gallons) in front of the entrance, and covering it with newspaper or plastic sheeting and a light layer of soil.

Because armadillos are nocturnal, all trapping techniques designed to capture armadillos emerging from burrows should be applied late in the afternoon and checked several hours after darkness. Some armadillos can be discouraged from returning to burrows by filling the hole after you are sure they have left for the night. Constant filling of the hole will often prevent them from returning. Laying chicken-wire along a patio, driveway or house foundation will also discourage them from burrowing.

Armadillos also can be trapped in raccoon-sized, metal, cage live-traps (available from local pest control and feed stores) or in homemade box traps.

Traps should be located near the entrance of burrows or along fences or other barriers where they might travel. This trap is most effective



when "wings" (1 x 6 inch x 6 feet boards or other material) are added to funnel the animal into the trap. The benefit of using baits with this trap is questionable. Suggested baits are live earthworms or mealworms in surrounding soil placed in hanging bags made of old nylon stockings. Other suggested baits are overripe or spoiled fruit. Armadillos are more likely to enter a cage trap when leaf litter or soil is placed over the wire bottom.

For more information visit: The Nine Banded Armadillo by Joseph M. Schaefer and Mark E. Hostetler at http://edis.ifas.ufl.edu/document_uw082
For trapping info: <http://nfrec.ifas.ufl.edu/MizellRF/armadillo.htm>

Drought Stress and Trees, Larry Figart, Urban Forester

This spring has not been so good for trees. The hotter and dryer than normal weather has caused many trees to become stressed. We do not think of having to provide supplemental irrigation to mature trees, but in certain cases it may be warranted. There are three primary reasons why trees are stressed this time of year. The three factors are drought, heat, and root disease. If you notice your tree not looking like it should, it may be from one or more of these issues.

Drought: In Northeast Florida, we typically have a dry spell March through May. This year it seemed a little worse than normal. From the beginning of 2012 to date, we are almost eight inches below normal according to data from the National Oceanic and Atmospheric Administration. Add the almost seven inch deficit from last year and you can see why our landscapes are dry. Trees need water to perform many of their basic functions. For example, trees use carbon dioxide and water in combination with sunlight in photosynthesis. In other words they use water to make their own food. If there is a shortage of water, the tree produces less food for itself. So in other words trees starve during droughts.

Heat: If you have lived in N.E. Florida very long you know that our summers are hot. In a typical summer we have at least ten days where the temperature exceeds 95 degrees. In plants, and our trees as well, hot temperatures can increase water loss through the leaves. The process by which water is evaporated through leaves is called transpiration. Transpiration is why we feel much cooler under the shade of a large tree. A large tree has been estimated to transpire 120 gallons of water a day during the summer. Trees are impacted when temperatures stay hot for long periods of time and the trees have trouble replacing the water lost during transpiration. If more water is lost than the tree can pick up through its roots, it is stressed. The roots cannot extract water from very dry soil. Periods of persistent stress cause rapid decline in trees.

Root Disease: Root disease is the factor that ties all this together. Root diseases are caused by fungi. Common root fungi are Armillaria, and Ganoderma. Armillaria and Ganoderma are naturally occurring fungi that cause decay in wood. They are found in

the soil and enter trees through root wounds. Frequently the root is wounded during some sort of activity of man. This can include lawn-mower damage, roots cut during construction, or roots severed through utility installation. These root fungi can colonize the root system and persist in the tree unrecognized for years or decades in some cases. Bit by bit, year after year, the root fungi compromise the trees' ability to take up water. At some point in time the tree root system is compromised where it cannot supply adequate moisture to the crown of the tree and the tree dies. This death can appear "sudden" during periods of high heat and drought. However, in most cases, trees colonized by root decay fungi often take months or years to die. Their foliage progressively becomes thinner and thinner with an increasing amount of branch dieback until it is obvious that the tree must be removed.

What Should We Do? While there is no solution for root disease, we may be able to give our trees some relief from the stress. Add an inch of water through irrigation to wet the top 12 inches of soil every two to four weeks in extended drought. Apply water to all soil under the canopy if possible. This may take several hours or more depending on what type of application devices are available to you. If you have limited time to devote to your trees, we think it is better to completely wet a small area than to only wet the surface a few inches over a large area. Limit pedestrian, mower, and vehicle traffic under the tree. Be sure you comply with local water restrictions.



Southern magnolia dropping leaves because it is under severe drought stress. Photo Credit: Ed Gilman

Duval County Extension
1010 N. McDuff Avenue
Jacksonville, FL 32254
(904) 255-7450
Fax: (904) 387-8902
Website: <http://duval.ifas.ufl.edu>

Non-Profit Org.
U.S. Postage Paid
Jacksonville, FL
Permit No. 1482

Address Service Requested



Deciduous Fruit Options by Terry DeValle (Continued from p. 5)



Persimmons: Persimmons are divided into astringent and non-astringent types. Astringent types must mature completely or will be very tart whereas non-astringent types can be eaten sooner

when the flesh is firm. Astringent types include 'Hachiya', 'Saijo', 'Ramopan', 'Tanenashi', and 'Gailey'. Non-astringent types include 'Fuyu', 'Hanafuyu', 'Izu', 'Matsumoto Wase Fuyu', 'O'Goshu', 'Jiro', and 'Motsumoto'. Persimmons will set a heavier crop if a pollinator variety is used.

Both 'Hachiya' and 'Gailey' are pollinator varieties so plant one of these with one of the other varieties. If 'Gailey' is used, resulting fruit on both trees will have some seeds. Spacing is 10' by 15'.

For more information on deciduous fruit go to:

- ◆ Blackberries <http://edis.ifas.ufl.edu/hs104>
- ◆ Blueberries <http://edis.ifas.ufl.edu/mg359>
- ◆ Deciduous Fruit for North Florida <http://edis.ifas.ufl.edu/mg211>.
- ◆ Figs <http://edis.ifas.ufl.edu/mg214>
- ◆ Muscadine Grapes <http://edis.ifas.ufl.edu/hs100>
- ◆ Pecans <http://edis.ifas.ufl.edu/pi217>
- ◆ Training and pruning deciduous fruit: <http://edis.ifas.ufl.edu/MG345>.

Extension information and services are available to all individuals regardless of race, color, sex or national origin. The information given herein is for educational purposes only. Reference to commercial products or trade names is made with the understanding that no endorsement by the Extension Service is implied. For persons with hearing or speech impairments, when contacting our office, please use the Florida Relay Service at 1-800-955-8771 (TDD).

Once you have read this newsletter, turn "A New Leaf" and pass this information on to a friend.

Terry B. DeValle
Extension Agent-Environmental Horticulture

This newsletter is jointly sponsored by the University of Florida/IFAS Extension Service, Millie Ferrer-Chancy, Interim Dean; City of Jacksonville, Alvin Brown, Mayor; and the Duval County Extension Service, Mike Sweat, Director.