

In the bottom right hand corner of the map page, you will see the following:



Use the scroll bar to scroll down to the bottom of the Layers list until you find Evacuation Routes and Evacuation Zones:

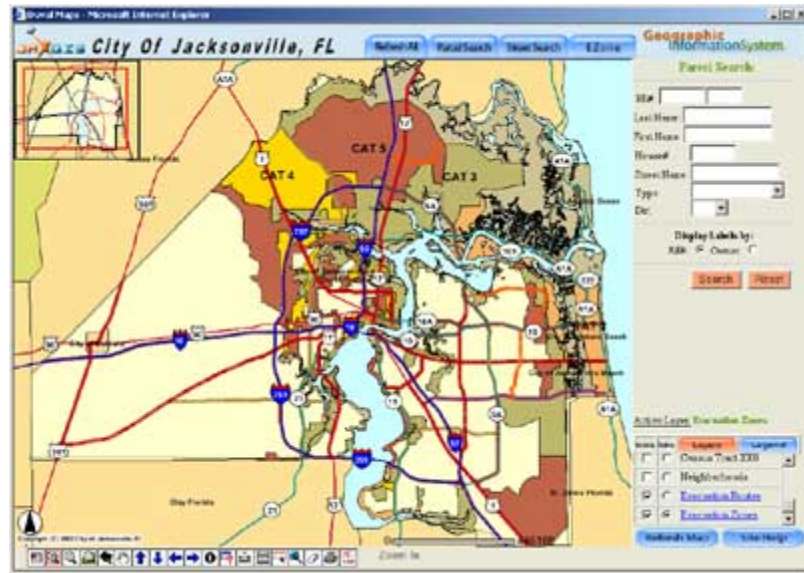


Click the check boxes for Evacuation Routes and Evacuation Zones as shown in the image to the right:



Then click "Refresh Map"

A full extent map will display as shown to the right. The map shows the evacuation routes and an overview of all evacuation zones by category.



Enter the FULL street address in the boxes provided, including the street type and direction if applicable. Then click "Search." (The example is for the City Hall Annex at 330 E. Bay Street.)

Geographic InformationSystem

Parcel Search:

RE#:

Last Name:

First Name:

House#:

Street Name:

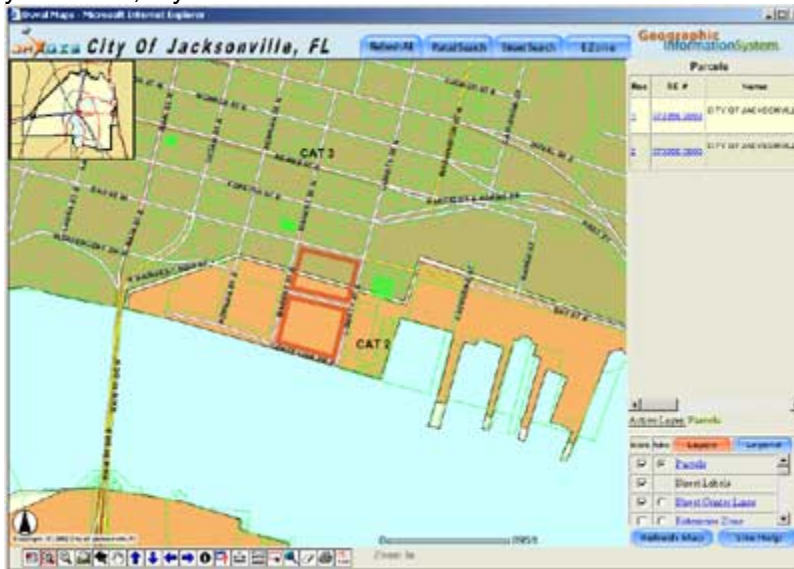
Type:

Dir:

Display Labels by:

RE#: ☒ Owner: ☐

The next map will show the location of your property and the hurricane evacuation zone you are in, if you are in one.



If the category of hurricane requires you to evacuate, please do so as quickly as possible using the evacuation routes shown on the map. Remember, being properly prepared for a hurricane is vital to the safety of you, your family and your property.