

SKILES ENGINEERING, P.A.  
1825 BAY MEADOWS BLVD. SUITE 200  
JACKSONVILLE, FL 32202  
904/996-1118 • FAX 904/996-1811  
STATE OF AUTHORIZATION NO. 88880  
Douglas L. Skiles, P.E.  
Professional Engineer No. 51260

# Riverside Court

Proposed Condominiums

Date	9/17/06
Sheet Name	Site Plan
Sheet Number	C-100

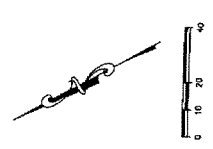
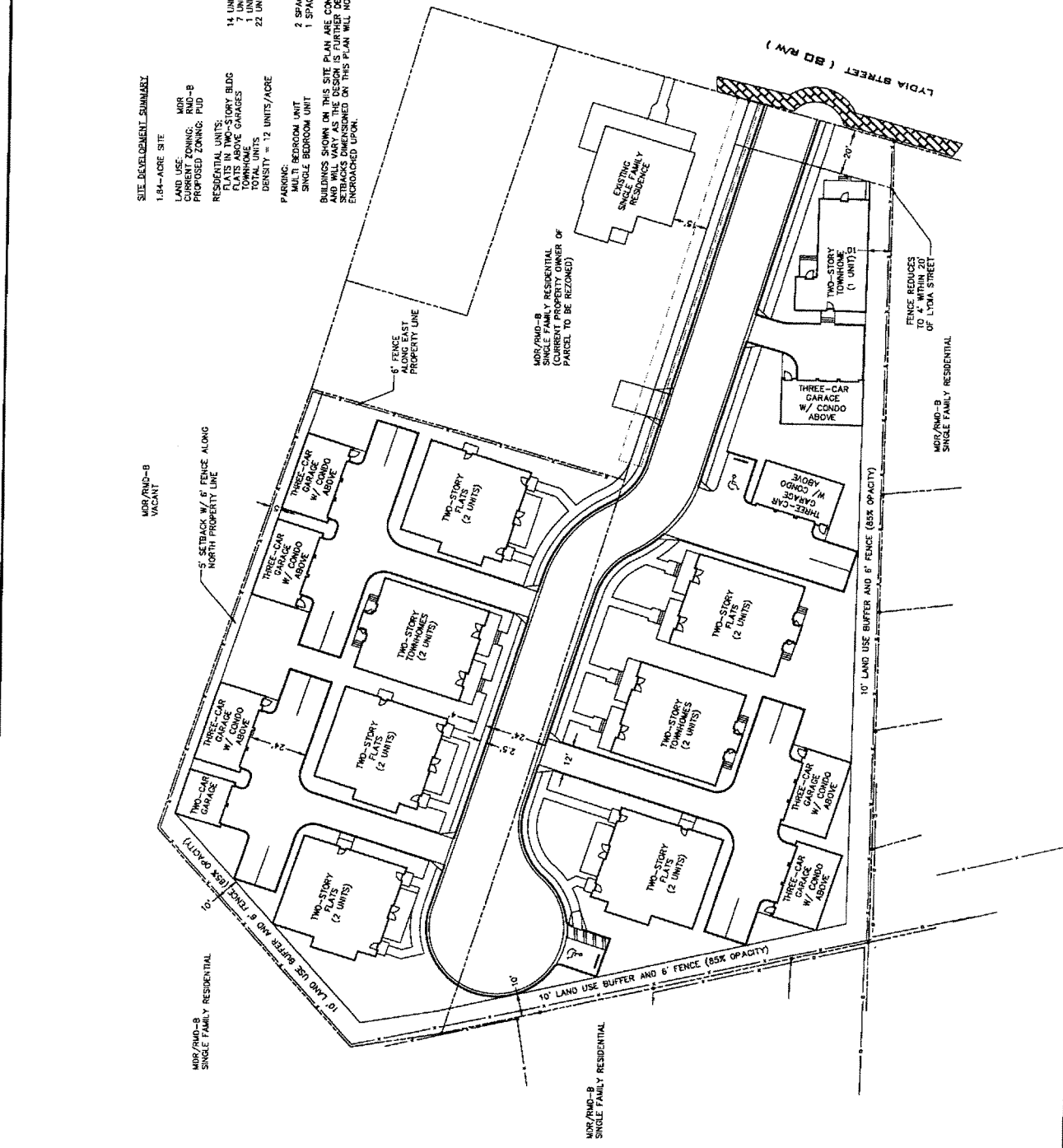
**SITE DEVELOPMENT SUMMARY:**

1.84-ACRE SITE  
 LAND USE: MDR  
 CURRENT ZONING: RMD-B  
 PROPOSED ZONING: PUD

**RESIDENTIAL UNITS:**  
 FLATS IN TWO-STORY BLDG: 14 UNITS  
 TOWNHOMES: 7 UNITS  
 TOTAL UNITS: 21 UNITS  
 DENSITY = 12 UNITS/ACRE

**PARKING:**  
 MULTI-BEDROOM UNIT: 2 SPACES/UNIT  
 SINGLE-BEDROOM UNIT: 1 SPACE/UNIT

BUILDINGS SHOWN ON THIS SITE PLAN ARE CONCEPTUAL AND WILL VARY AS THE DESIGN IS FURTHER DEVELOPED. DIMENSIONS DIMENSIONED ON THIS PLAN WILL NOT BE ENFORCED UPON.



**REVISED**  
 Exhibit 3 on File  
 Page \_\_\_ of \_\_\_