

Nature Scope

Explore, Experience, Preserve

A listing of JaxParks environmental education programs

For information on any NatureScope activity, call (904) 630 - CITY or visit www.jaxparks.com.

For JaxParks environmental education outdoor activities, we ask that you dress for the weather, wear comfortable closed-toe shoes, use insect repellent and bring water. You are welcome to bring binoculars if you have them.

Environmental Education Parks

Beach and Peach Urban Park
10013 Anders Blvd.

Sal Taylor Creek Preserve
5873 Nathan Hale Road

Blue Cypress Park
4012 University Blvd.

Tillie K. Fowler Regional Park
7000 Roosevelt Blvd.

Castaway Island Preserve
2885 San Pablo Road S.

Walter Jones Historical Park
11964 Mandarin Road

Camp Milton Historic Preserve
1175 Halsema Road N.

Camp Tomahawk Park
8419 San Ardo Road

Dutton Island Preserve
1921 Dutton Island Drive

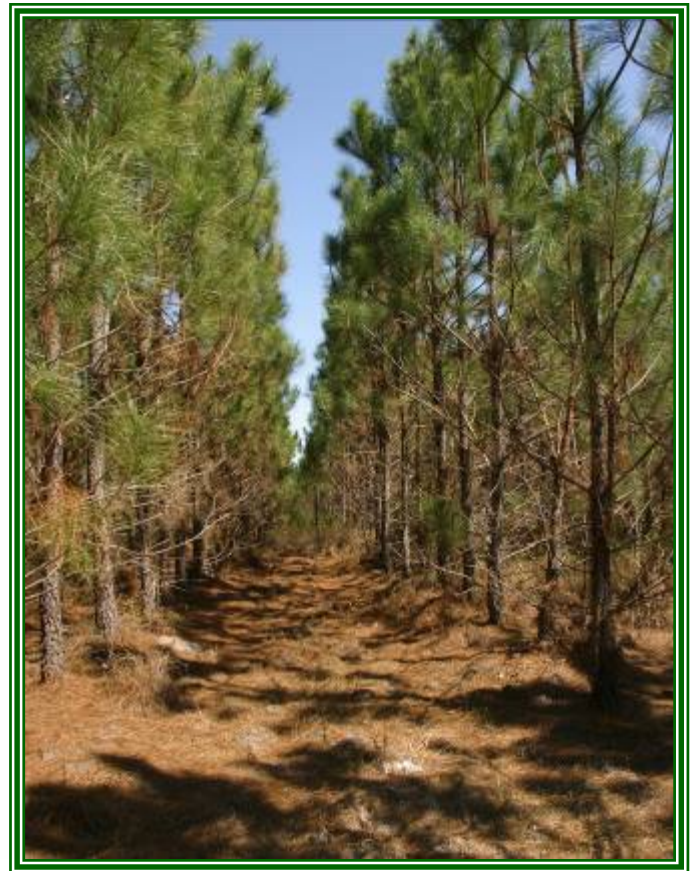
Huguenot Memorial Park
10980 Heckscher Drive

Kathryn Abbey Hanna Park
500 Wonderwood Drive

McGirts Creek Regional Park
8435 118th St.

Ortega Stream Valley @ Ringhaver Park
5198 118th St.

Reddie Point Preserve
4499 Yachtsman Way



Environmental Education

Naturescope

JaxParks Environmental Programs

Wee Workshops

Activities for children seven and under; includes a take-home craft

Textures of Nature

10:30 – 11:30 a.m. Tuesday, Dec. 2

Camp Tomahawk

10:30 – 11:30 a.m. Wednesday, Dec. 3

Tillie K. Fowler Regional Park

Nests, Dens & Other Hiding Places

10 - 11:30 a.m. Tuesday, Jan. 6

Camp Tomahawk

10 - 11:30 a.m. Wednesday, Jan. 7

Tillie K. Fowler Regional Park

Leaf Scavenger Hunt

10 - 11:30 a.m. Tuesday, Feb. 3

Camp Tomahawk

10 - 11:30 a.m. Wednesday, Feb. 4

Tillie K. Fowler Regional Park

Wildlife Wonders

Activities and workshops that span the gamut of our great outdoors

Coffee with the Birds and Butterflies

Observation of birds and butterflies; beverages provided. All ages welcome.

9 – 10 a.m. Friday, Dec. 5

9 - 10 a.m. Friday, Jan. 2

9 - 10 a.m. Friday, Feb. 6

Tillie K. Fowler Regional Park

Edible and Medicinal Plants

An identification of native plants historically used for food and medicine

10 - 11:30 a.m. Wednesday, Dec. 10

Mandarin Park

Animal Detective

Identification of animals by clues they leave

1 - 2:30 p.m. Monday, Dec. 22

2 - 3:30 p.m. Saturday, Jan. 24

2:30 - 4 p.m. Wednesday, Feb. 4

Tillie K. Fowler Regional Park

Nature Scavenger Hunt

A scavenger hunt using your five senses that takes you up close and personal with nature

2:30 - 3:30 p.m. Saturday, Dec. 27

Tillie K. Fowler Regional Park

Dangerous Plants and Animals

An indoor presentation that looks at some of the more dangerous local plants and animals

10:30 - 11:30 a.m. Monday, Dec. 29

2:30 - 3:30 p.m. Friday, Jan. 9

Tillie K. Fowler Regional Park

Snake Savvy!

A study and observation of snakes

1:30 - 3 p.m. Monday, Dec. 29

1:30 - 3 p.m. Tuesday, Jan. 20

Tillie K. Fowler Regional Park

10 - 11 a.m. Wednesday, Dec. 10

1 - 2 p.m. Friday, Feb. 6

Castaway Island Preserve

Nature Discovery

A tour of JaxParks' nature center at Tillie K. Fowler Park

3 - 4:30 p.m. Tuesday, Dec. 30

2 - 3:30 p.m. Saturday, Jan. 10

2:30 - 4 p.m. Wednesday, Feb. 18

2 - 3:30 p.m. Saturday, Feb. 21

Tillie K. Fowler Regional Park

Environmental
Education

NatureScope

Owl Encounter

A study of these popular birds with special guest Merlin, a non-releasable Barred owl

2:30 - 3:30 p.m. Wednesday, Dec. 31

2:30 - 3:30 p.m. Wednesday, Jan. 21

2:30 - 3:30 p.m. Thursday, Feb. 12

Tillie K. Fowler Regional Park

Bones and Skulls

A study and identification of animal bones

3:30 - 4:30 p.m. Wednesday, Jan. 7

Tillie K. Fowler Regional Park

Tree Identification

A study and identification of local trees designed for 4th grade school level and up

2 - 3 p.m. Monday, Feb. 16

2 - 3 p.m. Sunday, Feb. 22

Tillie K. Fowler Regional Park

Tree Cookies

A fun, interesting approach to learning about the life history of a tree

2 - 3 p.m. Friday, Feb. 27

2 - 3 p.m. Saturday, Feb. 28

Tillie K. Fowler Regional Park

ART-ful Nature

Activities involving the creation of art using various nature items

Paper Making & Seasonal Greeting Cards

1:30 - 2:30 p.m. Monday, Dec. 15

10 - 11:30 a.m. Friday, Dec. 19

Tillie K. Fowler Regional Park

Wreath Centerpieces

10:30 - 11:30 a.m. Tuesday, Dec. 16

1:30 - 2:30 p.m. Wednesday, Dec. 17

Tillie K. Fowler Regional Park

Seed Art

2 - 3 p.m. Tuesday, Jan. 13

10 - 11 a.m. Thursday, Jan. 15

Tillie K. Fowler Regional Park

Leaf Scavenger Hunt Valentine's Project

2:30 - 3:30 p.m. Saturday, Feb. 14

Tillie K. Fowler Regional Park

Nature Weaving

10:30 - 11:30 a.m. Friday, Feb. 20

Tillie K. Fowler Regional Park

Stories around the Fire

A sharing of stories around the fireplace while sipping hot cocoa

7:30 - 8:30 p.m. Tuesday, Dec. 30

Tillie K. Fowler Regional Park

Orienteering

Navigation techniques using compasses and written directions

*Intermediate Orienteering**

2:30 - 4 p.m. Tuesday, Feb. 10

Tillie K. Fowler Regional Park

Air Potato Roundup!

A study of invasive plants and hands-on activity to remove some of these plants from the local park

1:30 - 2:30 p.m. Tuesday, Dec. 9

Tillie K. Fowler Regional Park

Birding Adventures

A variety of birding programs for all experience levels

Project Feeder Watch (in partnership with the Cornell Lab of Ornithology's feeder research program)

10:30-11:30 a.m., Friday, Dec. 5

10:30-11:30 a.m., Friday, Jan. 2

Tillie K. Fowler Regional Park

Great Backyard Bird Count Training

Part of a national study open to birdwatchers of all ages and experience levels

2 - 3 p.m. Friday, Jan. 30

Tillie K. Fowler Regional Park

Birding for Beginners

An introduction to field guides, binoculars and bird identification

8:30 – 11 a.m. Saturday, Jan. 31

Tillie K. Fowler Regional Park

Birding by Ear

Activities to help identify birds by sound as well as sight.

2 – 3 p.m. Saturday, Jan. 31

Tillie K. Fowler Regional Park



Great Outdoor Adventure

Family activities featuring themes from the Mayor's Great Outdoor Adventure

Monthly themes for winter 08-09:

December – Local Heritage

January – Wildlife

February – Tree Treasures

JaxParks Naturalist GOA Programs

10:30 - 11:30 a.m. Monday, Dec. 1

1:30 - 2:30 p.m. Monday, Dec. 15

10:30 - 11:30 a.m. Monday, Jan. 5

10:30 - 11:30 a.m. Monday, Feb. 2

*McGirts Creek Regional Park**

1:30 p.m. - 2:30 p.m. Monday, Dec. 1

*Camp Milton Historic Preserve**

3 - 4 p.m. Tuesday, Dec. 9

2 - 3 p.m. Tuesday, Dec. 30

3 - 4 p.m. Tuesday, Jan. 6

1 - 2 p.m. Wednesday, Jan. 21

3 - 4 p.m. Tuesday, Feb. 3

2 - 3 p.m. Wednesday, Feb. 18

*Beach and Peach Urban Park**

2 - 3 p.m. Wednesday, Dec. 10

*Reddie Point Preserve**

10:30 - 11:30 a.m. Monday, Dec. 15

*Sal Taylor Creek Preserve**

1 - 2 p.m. Tuesday, Jan. 20

Castaway Island Preserve

GOA training class for parents with curriculum based on the book "Last Child in the Woods" by Richard Louv. Reservations required. Free babysitting available.

9:30 - 11:30 a.m. Friday, Jan. 16

Tillie K. Fowler Regional Park

NatureScope

JaxParks community center-based **GOA** classes are for both preschoolers and their families. The same class theme is offered each week at the designated locations.

Mondays

Blue Cypress 10 a.m.
Clanzel Brown 9 a.m.
Emmett Reed 9:30 a.m.
Julian Barrs 11 a.m.
Julian Barrs noon (2nd class)
McGirts Creek 11 a.m.

Tuesdays

Burnett Park 10 a.m.
Charles Clark 11 a.m.
Dinsmore 11 a.m.
H.T. Jones 11 a.m.

Wednesdays

Beverly Hills 6 p.m.
Cecil 9 a.m.
Cuba Hunter 10 a.m.
Edith Ford 10 a.m.
M.L. Gibbs noon
McGirts Creek 11 a.m.
Oceanway 11 a.m.

Thursdays

Balis 10 a.m.
Carvill 10:30 a.m.
Charles Clark 11 a.m.
Johnnie Walker 9:30 a.m.
Julian Barrs 6 p.m.
Robert F Kennedy 10 a.m.
M.L. Gibbs noon
Oceanway 11 a.m.
Windy Hill 10 a.m.

Fridays

Dinsmore 11 a.m.

Outdoor Explorations

An immersion into natural Northeast Florida on foot or bike

Beach Walks and Talks

Guided tours of JaxParks oceanfront parks and portions of the Great Florida Birding Trail

11:30 a.m. - 12:30 p.m. or 1 - 2 p.m.

Thursday, Dec. 4

12:30 - 1:30 p.m. or 2 - 3 p.m.

Thursday, Dec. 18

12:30 - 1:30 p.m. or 2 - 3 p.m.

Thursday, Jan. 15

12:30 - 1:30 p.m. or 2 - 3 p.m.

Thursday, Jan. 29

12:30 - 1:30 p.m. or 2 - 3 p.m.

Thursday, Feb. 12

12:30 - 1:30 p.m. or 2 - 3 p.m.

Thursday, Feb. 26

Huguenot Memorial Park (please meet at the campground store inside the park)

9:30 - 10:30 a.m. or 11 a.m. - noon

Tuesday, Dec. 9 (lot 8)

9:30 - 10:30 a.m. or 11 a.m. - noon

Tuesday, Dec. 30 (lot 4)

9:30 - 10:30 a.m. or 11 a.m. - noon

Tuesday, Jan. 6 (lot 8)

9:30 - 10:30 a.m. or 11 a.m. - noon

Wednesday, Jan. 21 (lot 4)

9:30 - 10:30 a.m. or 11 a.m. - noon

Tuesday, Feb. 3 (lot 8)

9:30 - 10:30 a.m. or 11 a.m. - noon

Wednesday, Feb. 18 (lot 4)

Kathryn Abbey Hanna Park

Environmental Education

NatureScope

Trail Walks

Guided explorations of trails in Northeast Florida

9 - 10 a.m. Monday, Dec. 1

9 - 10 a.m. Monday, Jan. 5

9 - 10 a.m. Monday, Feb. 2

McGirts Creek Regional Park

9 - 10 a.m. Thursday, Dec. 4

Noon - 1 p.m. Wednesday, Jan. 7

10:30 - 11:30 a.m. Tuesday, Jan. 20

Noon - 1 p.m. Wednesday, Feb. 4

10:30 - 11:30 a.m. Tuesday, Feb. 24

Blue Cypress Park

9:30 - 10:30 a.m. Monday, Dec. 8

9:30 - 10:30 a.m. Monday, Jan. 12

9:30 - 10:30 a.m. Monday, Jan. 26

9:30 - 10:30 a.m. Monday, Feb. 9

9:30 - 10:30 a.m. Monday, Feb. 23

*Jacksonville Baldwin Rail - Trail at
Camp Milton Historic Preserve*

1 - 2 p.m. Tuesday, Dec. 9

1 - 2 p.m. Tuesday, Jan. 6

1 - 2 p.m. Tuesday, Feb. 3

*Dutton Island Preserve * +*

9 - 10 a.m. Monday, Dec. 15

1 - 2 p.m. Monday, Jan. 5

10 - 11 a.m. Friday, Jan. 30

1 - 2 p.m. Monday, Feb. 2

9 - 10 a.m. Friday, Feb. 6

*Sal Taylor Creek Preserve * +*

1:30 - 2:30 p.m. Monday, Dec. 22

2 - 3 p.m. Monday, Feb. 9

2 - 3 p.m. Monday, Feb. 23

Camp Milton Historic Preserve

10 - 11 a.m. Wednesday, Jan. 7

9 - 10 a.m. Tuesday, Jan. 20

10 - 11 a.m. Wednesday, Feb. 4

9 - 10 a.m. Tuesday, Feb. 24

*Reddie Point Preserve * +*

Bike Hikes

Leisurely nature-based rides along the
Jacksonville Baldwin Rail-Trail

11 a.m. – noon or 12:30 - 1:30 p.m.
Monday, Dec. 8

9:30 - 10:30 a.m. or 11 a.m. – noon
Monday, Dec. 22

11 a.m. – noon or 12:30 - 1:30 p.m.
Monday, Jan. 12

11 a.m. – noon or 12:30 - 1:30 p.m.
Monday, Jan. 26

11 a.m. – noon or 12:30 - 1:30 p.m.
Monday, Feb. 9

11 a.m. – noon or 12:30 - 1:30 p.m.
Monday, Feb. 23

*Jacksonville Baldwin Rail-Trail at
Camp Milton Historic Preserve*

(904) 630-CITY

jaxparks.com

Jacksonville
Where Florida Begins.

Environmental
Education