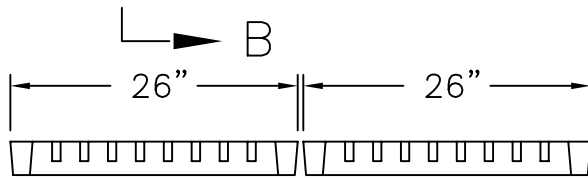
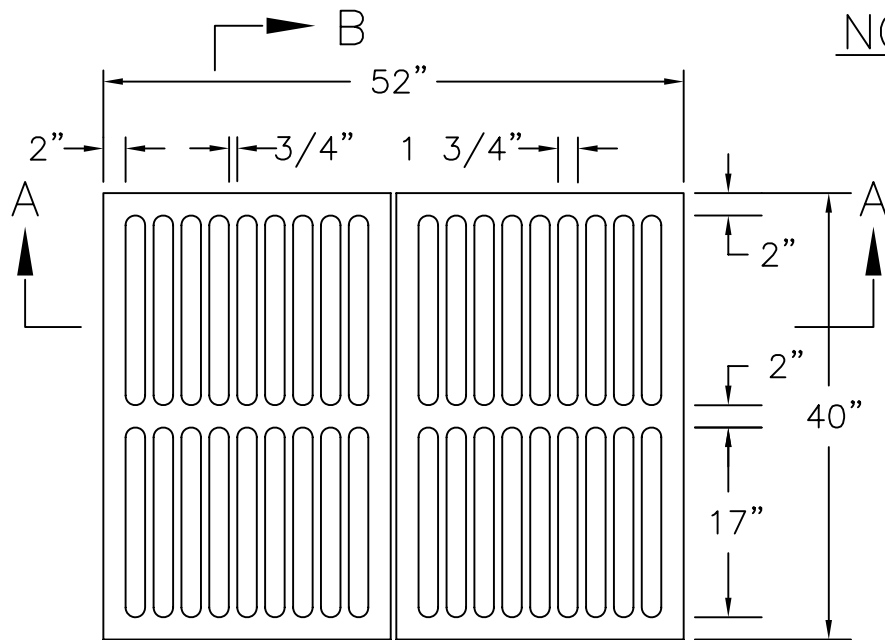


NON-TRAFFIC BEARING

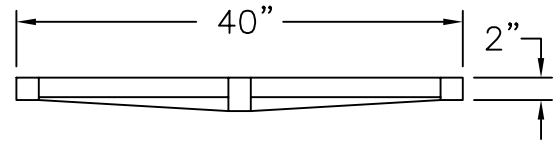
GRATE FOR
TYPE "E" INLET

NOTE: 2 GRATES SHOWN

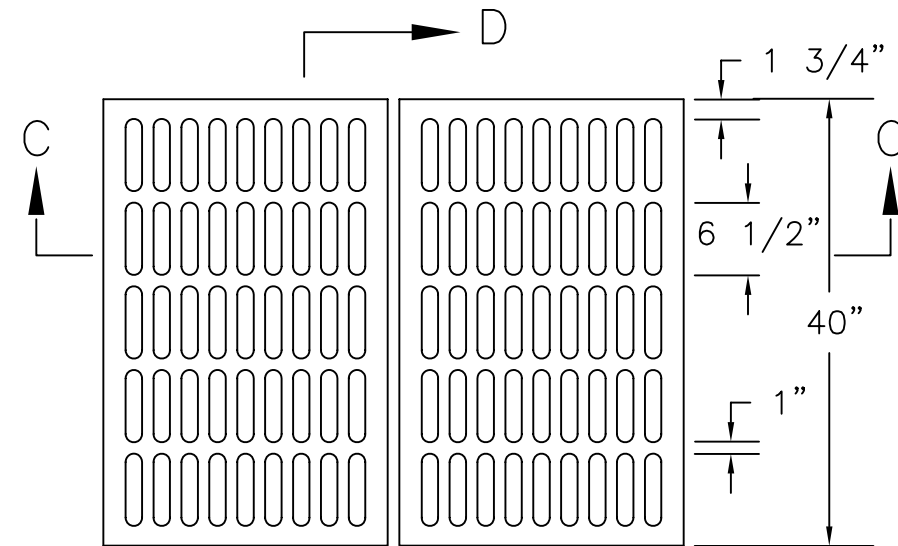
EACH GRATE SHALL HAVE A
MIN. WEIGHT OF 240 LBS.



SECTION A-A



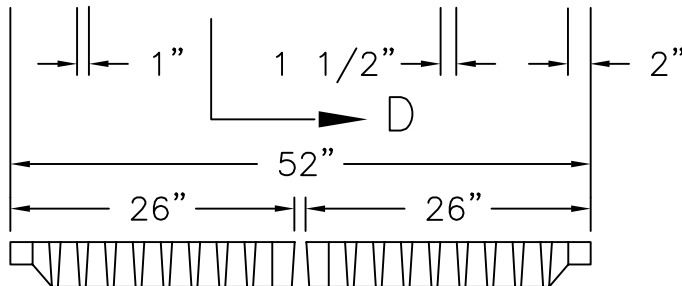
SECTION B-B



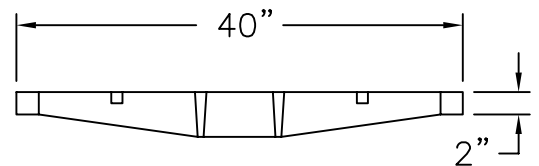
TRAFFIC BEARING
GRATE FOR
TYPE "E" INLET

NOTE: 2 GRATES SHOWN

EACH GRATE SHALL HAVE A
MIN. WEIGHT OF 316 LBS.



SECTION C-C



SECTION D-D

GRATE DETAIL
FOR
TYPE "E" INLET

CITY OF
JACKSONVILLE
STANDARD

N.T.S.

PLATE D-307

DATE DRAWN 5-16-89

REVISED DATE 5-12-94