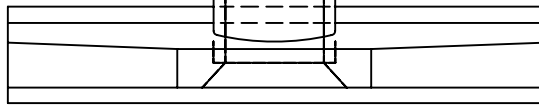
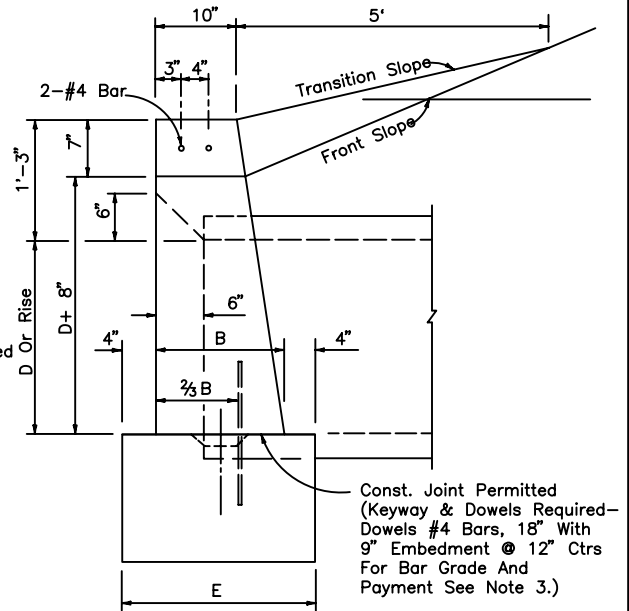


FRONT VIEW



TOP VIEW

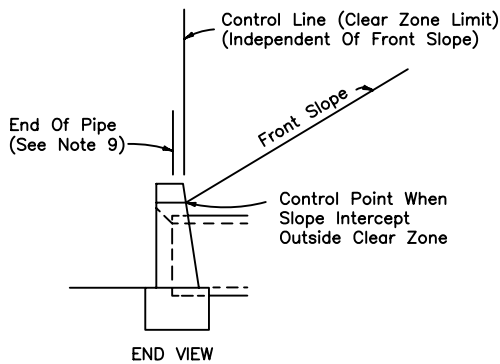
Const. Joint Permitted
See End View
(Enlarged)



END VIEW (ENLARGED)

ENDWALL DIMENSIONS (EXCLUSIVE OF MULTIPLE PIPE SPACING)

GENERAL NOTES



END VIEW

STANDARD LOCATION CONTROL

1. Endwall dimensions, locations and positions are for round and elliptical concrete pipe and for round and pipe-arch corrugated metal pipe. Round concrete pipe shown. See plates D-403, 404, & 405.
2. Endwalls may be cast in place or precast concrete. Reinforcing steel shall be Grades 40 or 60. Additional reinforcement necessary for handling precast units shall be determined by the Contractor or the supplier. Cost of reinforcement shall be included in the contract unit price for concrete, (endwalls).
3. All exposed corners and edges of concrete are to be chamfered $\frac{3}{4}$ ".
4. Concrete meeting the requirements of ASTM C-478 (4000 psi) may be used in lieu of Class ~ concrete in precast items manufactured in plants which are under the Standard Operating Procedures for the inspection of precast drainage products.
5. On outfall ditches with side slopes flatter than 1 1/2:1 provide 20' transitions from the endwall to the flatter side slopes, right of way permitting.
6. Pipe length plan quantities shall be based on the pipe end locations shown in the standard location control end view, or lengths based on special endwall locations called for in the plans.

STRAIGHT CONCRETE
ENDWALLS-SINGLE
AND MULTIPLE PIPE

*CITY OF
JACKSONVILLE
STANDARD*

N.T.S.

PLATE D-401

DATE DRAWN 8-11-79

REVISED DATE 5-12-94