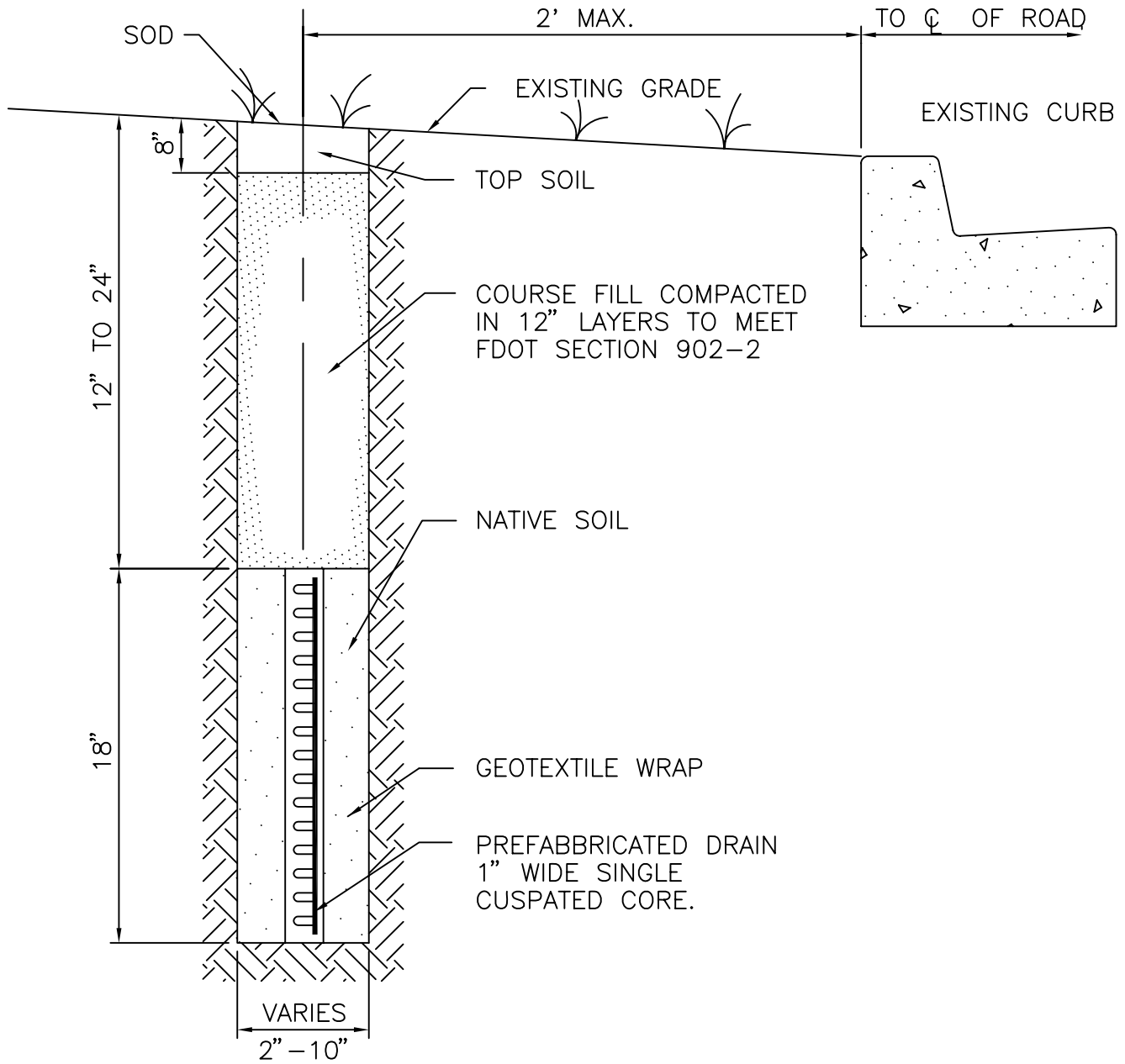


# TYPICAL PREFABRICATED EDGE DRAIN



NOTE: MINIMUM PIPE SLOPE OF 0.30%

PREFABRICATED  
EDGE DRAIN  
DETAIL

*CITY OF  
JACKSONVILLE  
STANDARD*

N.T.S.

PLATE D-706

DATE DRAWN 4-28-79

REVISED DATE 5-12-94