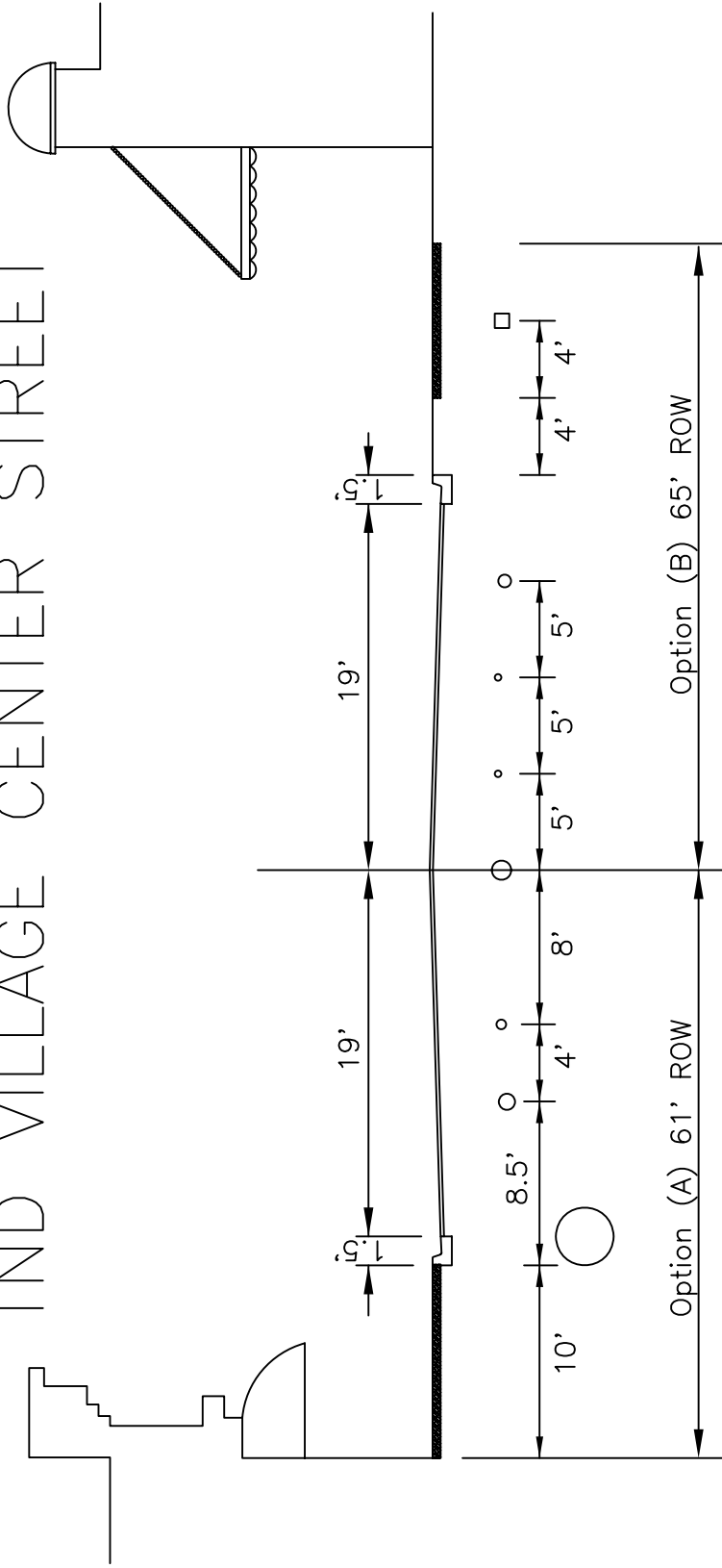


UTILITY LOCATION GUIDELINES TND VILLAGE CENTER STREET



- Sidewalk
Option (A) 61' ROW
- Storm Drain
8.5'
- Reclaimed Water
4'
- CATV
5'
- San Sewer
5'
- Gas
5'
- Telephone
5'
- Water
5'
- Sidewalk
4'
- Electric
4'

Depths at Finished Grade Locations:
 Electric: 42"
 Reclaim Water/Gas/FM/Water/Sewer: 36"
 CATV/Telephone: 18" - 24" Min.
 Sewer Service From R/W: 30" - 60" Deep

TND
VILLAGE CENTER
STREET

*CITY OF
JACKSONVILLE
STANDARD*

N.T.S.

PLATE P-502

DATE DRAWN 3/12/97

REVISED DATE