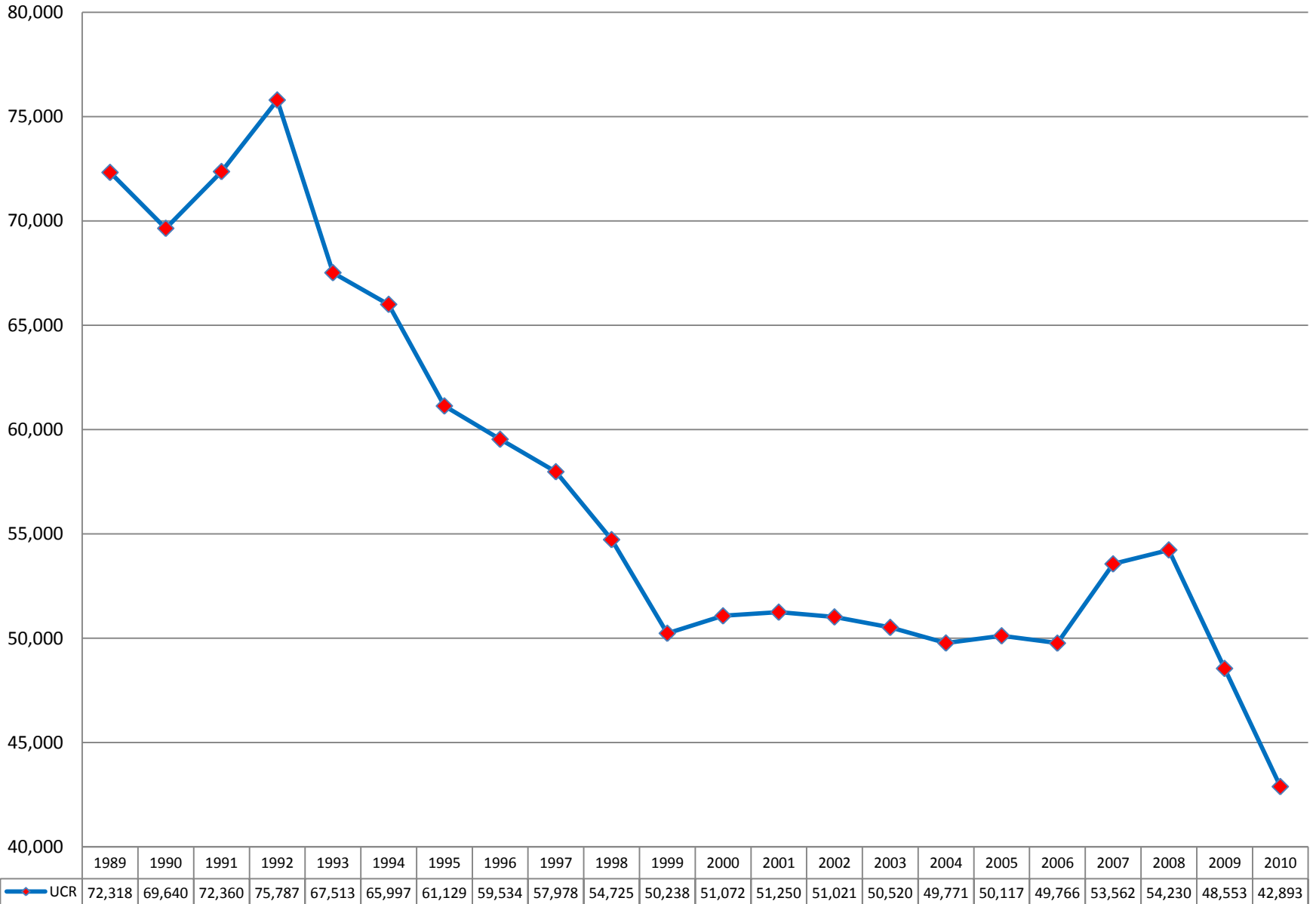




Total Number of Part 1 Crimes 1989-2010



UCR Comparisons – 2009 vs. 2010 and 2008 vs. 2010

| <u>UCR Offenses</u> | 2008 | 2009 | 2010 | 2009-2010 Difference | 2009-2010 Percent Change | 2008-2010 (2-Year Change) Difference | 2008-2010 (2-Year Change) Percent Change |
|-------------------------------|---------------|---------------|---------------|-------------------------|--------------------------------|--|--|
| Murder | 115 | 99 | 80 | -19 | -19.2% | -35 | -30.4% |
| Rape | 262 | 218 | 316 | 98 | 45.0% | 54 | 20.6% |
| Robbery | 2,938 | 2,359 | 1,693 | -666 | -28.2% | -1,245 | -42.4% |
| Aggravated Assault | 4,717 | 4,096 | 3,380 | -716 | -17.5% | -1,337 | -28.3% |
| Violent Crime | 8,032 | 6,772 | 5,469 | -1,303 | -19.2% | -2,563 | -31.9% |
| | | | | | | | |
| Burglary | 12,012 | 11,306 | 9,588 | -1,718 | -15.2% | -2,424 | -20.2% |
| Larceny | 30,157 | 27,754 | 25,863 | -1,891 | -6.8% | -4,294 | -14.2% |
| Vehicle Theft | 4,029 | 2,721 | 1,973 | -748 | -27.5% | -2,056 | -51.0% |
| Property Crime | 46,198 | 41,781 | 37,424 | -4,357 | -10.4% | -8,774 | -19.0% |
| | | | | | | | |
| Total UCR Crime | 54,230 | 48,553 | 42,893 | -5,660 | -11.7% | -11,337 | -20.9% |

UCR Comparisons – 2009 vs. 2010

| <u>UCR Offenses</u> | 2008 | 2009 | 2010 | 2009-2010 Difference | 2009-2010 Percent Change |
|------------------------|---------------|---------------|---------------|----------------------|--------------------------|
| Murder | 115 | 99 | 80 | -19 | -19.2% |
| Rape | 262 | 218 | 316 | 98 | 45.0% |
| Robbery | 2,938 | 2,359 | 1,693 | -666 | -28.2% |
| Aggravated Assault | 4,717 | 4,096 | 3,380 | -716 | -17.5% |
| Violent Crime | 8,032 | 6,772 | 5,469 | -1,303 | -19.2% |
| | | | | | |
| Burglary | 12,012 | 11,306 | 9,588 | -1,718 | -15.2% |
| Larceny | 30,157 | 27,754 | 25,863 | -1,891 | -6.8% |
| Vehicle Theft | 4,029 | 2,721 | 1,973 | -748 | -27.5% |
| Property Crime | 46,198 | 41,781 | 37,424 | -4,357 | -10.4% |
| | | | | | |
| Total UCR Crime | 54,230 | 48,553 | 42,893 | -5,660 | -11.7% |

Clearance Rates 2008-2010

| <u>Clearance Rate</u> | 2008 | 2009 | 2010 | 2009 National Average |
|---------------------------|-------------|-------------|--------------|------------------------------|
| Murder | 66.1% | 78.8% | 82.5% | 59.8% |
| Rape | 66.4% | 69.3% | 56.6% | 43.1% |
| Robbery | 23.0% | 23.7% | 26.6% | 22.5% |
| Aggravated Assault | 48.8% | 55.8% | 55.9% | 52.1% |
| Violent Crime | 40.2% | 45.4% | 47.3% | 40.5% |
| | | | | |
| Burglary | 10.3% | 12.1% | 12.6% | 9.2% |
| Larceny | 17.8% | 20.3% | 16.4% | 16.2% |
| Vehicle Theft | 15.5% | 19.7% | 15.8% | 8.7% |
| Property Crime | 15.6% | 18.0% | 15.4% | 13.6% |
| | | | | |
| Total UCR Crime | 19.3% | 21.8% | 19.5% | |