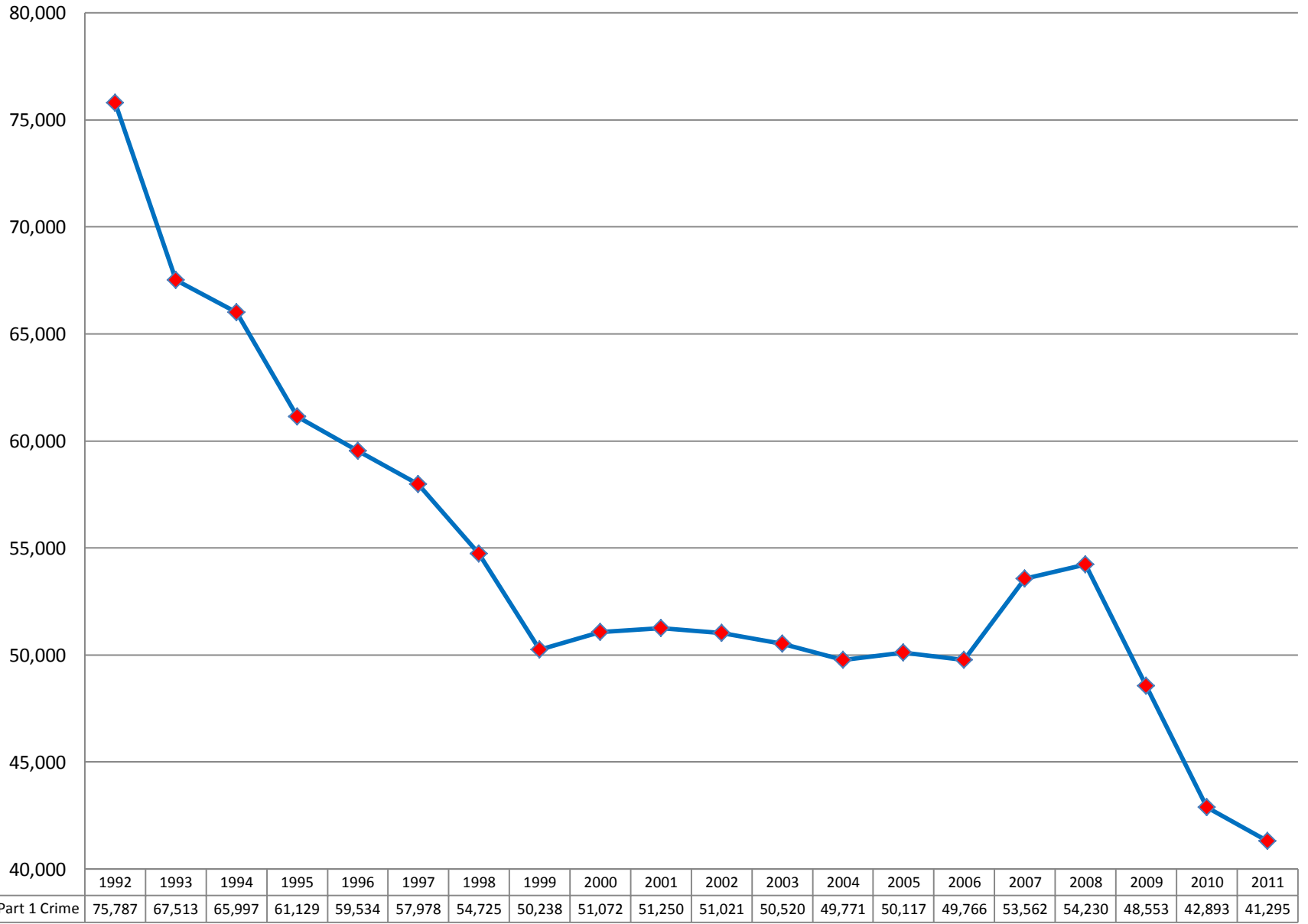




Total Number of Part 1 Crimes

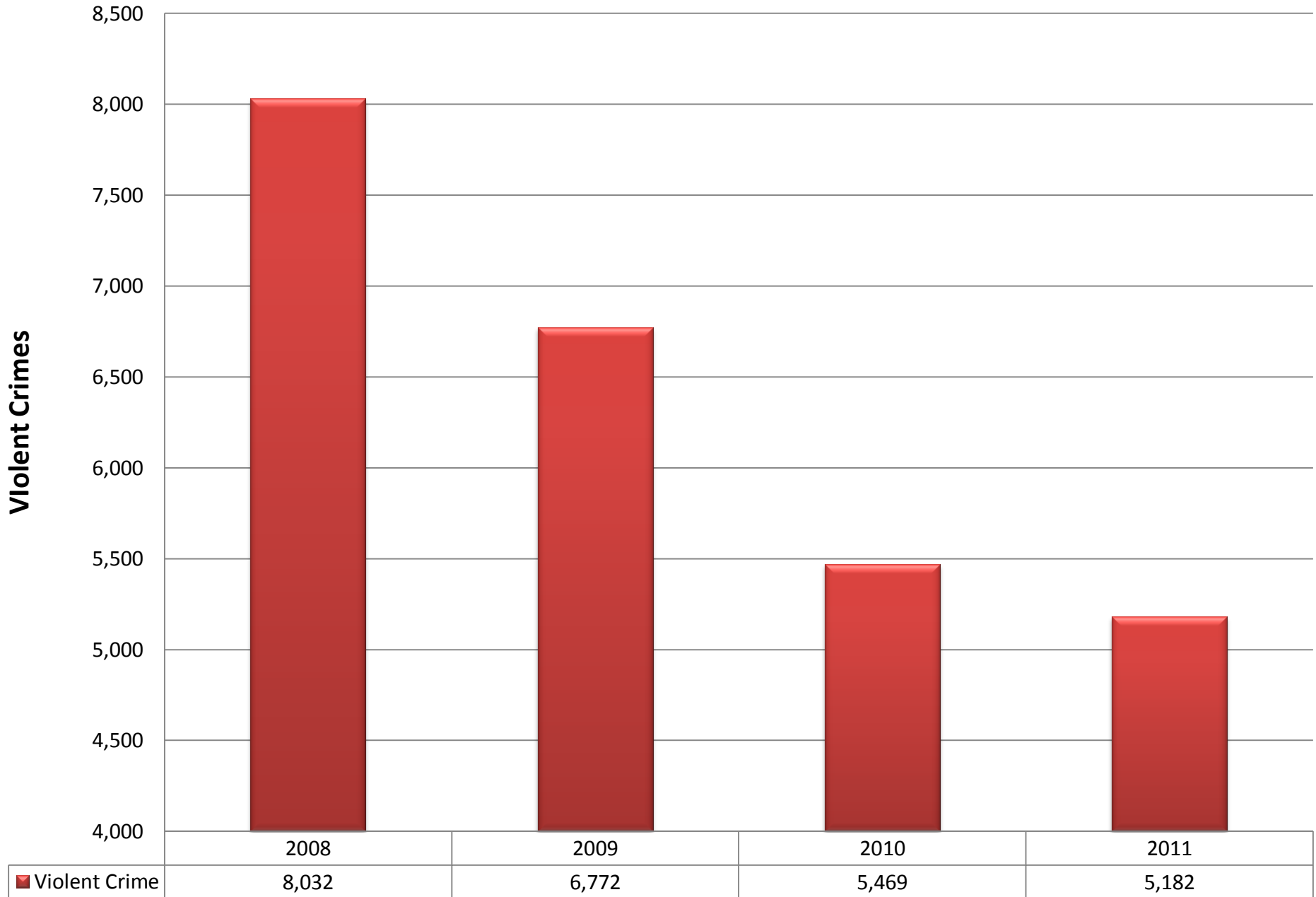
Last 20 Years



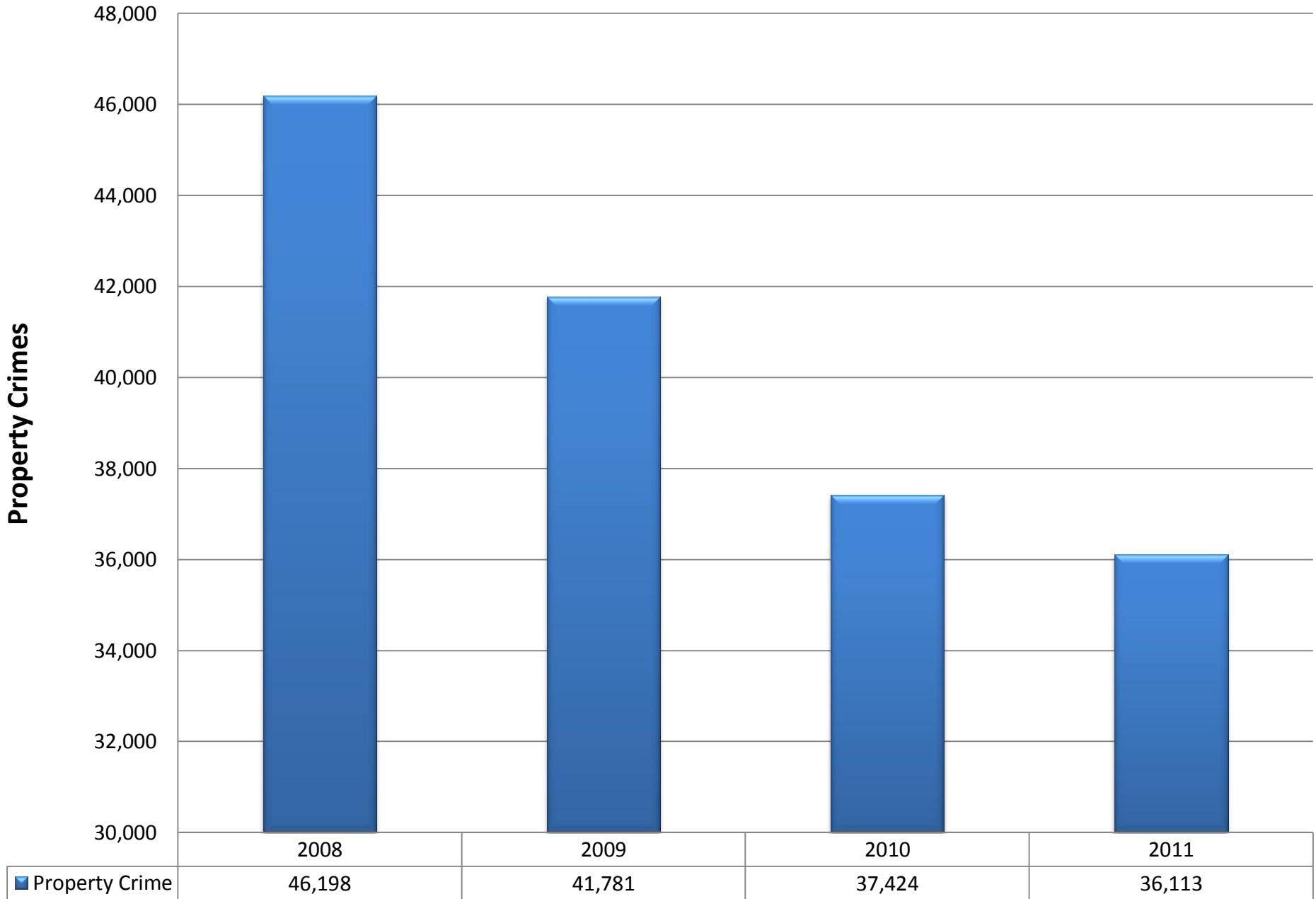
UCR Comparisons – 2010 vs. 2011

<u>UCR Offenses</u>	2008	2009	2010	2011	2010-2011 Difference	2010-2011 Percent Change
Murder	115	99	80	71	-9	-11.30%
Rape	262	218	316	350	34	10.80%
Robbery	2,938	2,359	1,693	1,578	-115	-6.80%
Aggravated Assault	4,717	4,096	3,380	3,183	-197	-5.80%
Violent Crime	8,032	6,772	5,469	5,182	-287	-5.20%
Burglary	12,012	11,306	9,588	8,518	-1,070	-11.20%
Larceny	30,157	27,754	25,863	25,733	-130	-0.50%
Vehicle Theft	4,029	2,721	1,973	1,862	-111	-5.60%
Property Crime	46,198	41,781	37,424	36,113	-1,311	-3.50%
Total UCR Crime	54,230	48,553	42,893	41,295	-1,598	-3.70%

UCR Violent Crime Comparison 2008 - 2011



UCR Property Crime Comparison 2008 - 2011



UCR Comparisons – 2010 vs. 2011 and 2008 vs. 2011

UCR Offenses	2008	2009	2010	2011	2010-2011 Difference	2010-2011 Percent Change	2008-2011 (3-Year Change) Difference	2008-2011 (3-Year Change) Percent Change
Murder	115	99	80	71	-9	-11.3%	-44	-38.3%
Rape	262	218	316	350	34	10.8%	88	33.6%
Robbery	2,938	2,359	1,693	1,578	-115	-6.8%	-1,360	-46.3%
Aggravated Assault	4,717	4,096	3,380	3,183	-197	-5.8%	-1,534	-32.5%
Violent Crime	8,032	6,772	5,469	5,182	-287	-5.2%	-2,850	-35.5%
Burglary	12,012	11,306	9,588	8,518	-1,070	-11.2%	-3,494	-29.1%
Larceny	30,157	27,754	25,863	25,733	-130	-0.5%	-4,424	-14.7%
Vehicle Theft	4,029	2,721	1,973	1,862	-111	-5.6%	-2,167	-53.8%
Property Crime	46,198	41,781	37,424	36,113	-1,311	-3.5%	-10,085	-21.8%
Total UCR Crime	54,230	48,553	42,893	41,295	-1,598	-3.7%	-12,935	-23.9%

Clearance Rates 2009-2011

<u>Clearance Rate</u>	2009	2010	2011	2009 National Average
Murder	78.8%	82.5%	83.1%	56.7%
Rape	69.3%	56.6%	42.0%	40.6%
Robbery	23.7%	26.6%	30.4%	23.6%
Aggravated Assault	55.8%	55.9%	58.1%	48.8%
Violent Crime	45.4%	47.3%	48.9%	39.5%
Burglary	12.1%	12.6%	13.5%	8.9%
Larceny	20.3%	16.4%	16.3%	15.3%
Vehicle Theft	19.7%	15.8%	19.1%	7.7%
Property Crime	18.0%	15.4%	15.8%	12.8%
Total UCR Crime	21.8%	19.5%	19.9%	