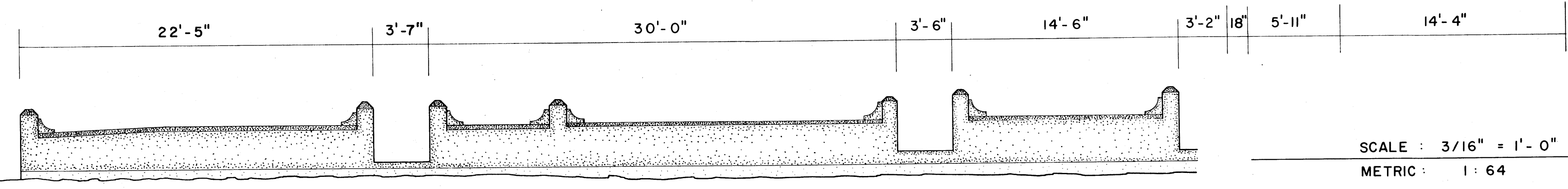


TRIM LINE

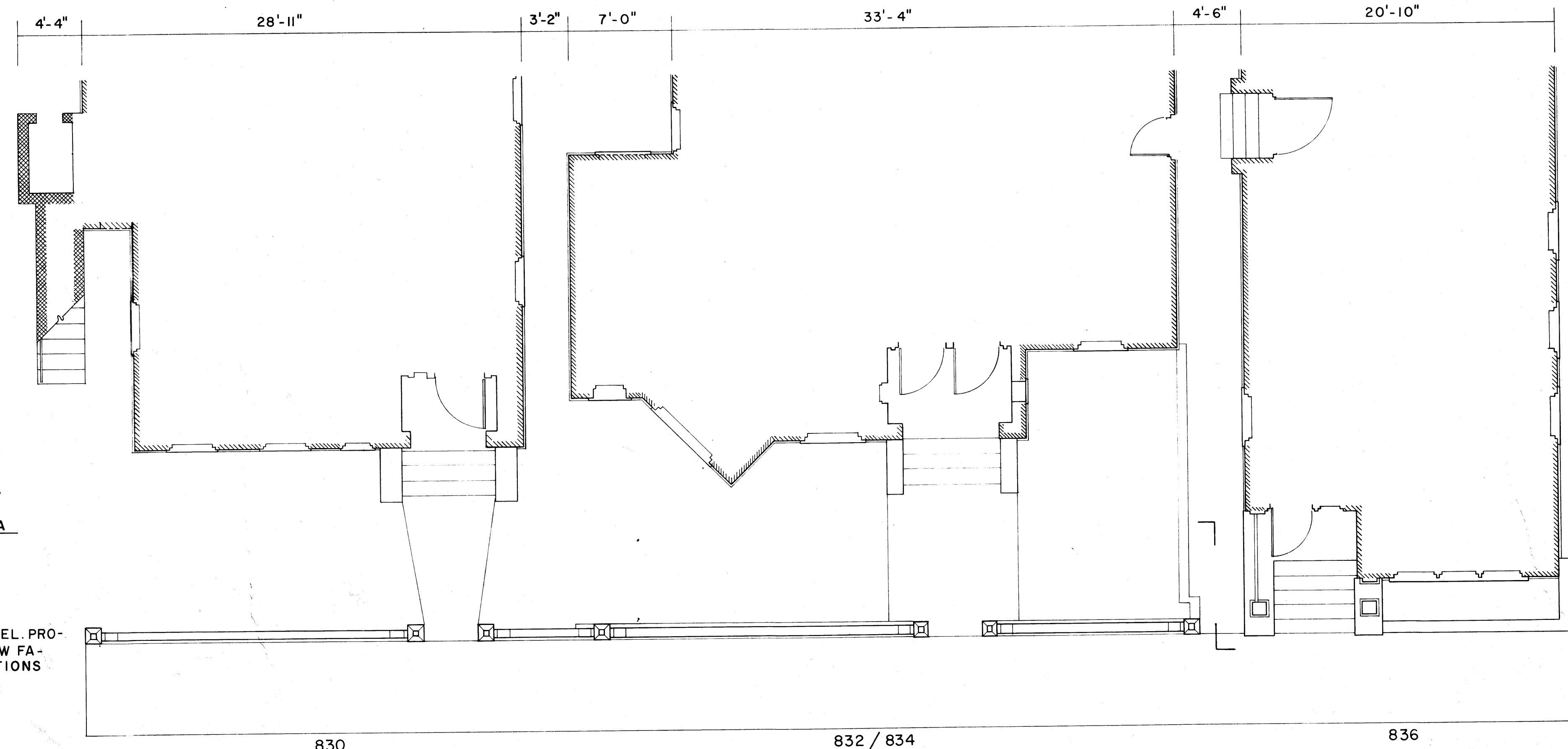
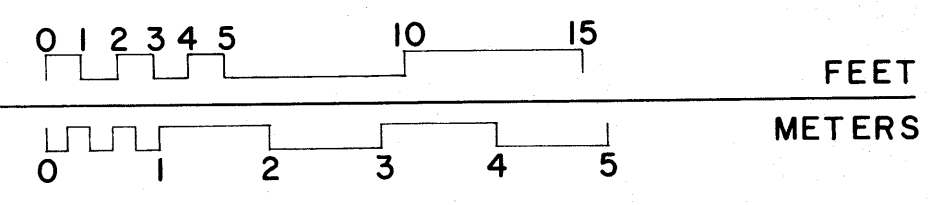
4'-6"
22'-8"
24"



STREET (NORTH) ELEVATION



SCALE : 3/16" = 1'-0"
METRIC : 1 : 64



PARTIAL PLAN

NOTE : WALL EL. PRO-
JECTED BELOW FA-
CADE ELEVATIONS

830

832 / 834

836

UNEDITED BY HABS

DRAWN BY: ROBERT W. MOSE, RUTHIE D. WILEY, ROBERT L. WILTSE, 1975
JACKSONVILLE PROJECT 1975
OFFICE OF ARCHAEOLOGY AND HISTORIC PRESERVATION
UNDER DIRECTOR'S DEPARTMENT OF THE INTERIOR,
UNITED STATES DEPARTMENT OF THE INTERIOR

NAME AND LOCATION OF STRUCTURE
LA VILLA BOARDING HOUSES
JACKSONVILLE

830 - 836 HOUSTON STREET

DUVAL COUNTY, FLORIDA

HISTORIC AMERICAN
BUILDINGS SURVEY
SHEET 2 OF 3 SHEETS

SURVEY NO.

UNIVERSITY OF MICHIGAN
SERIALS ACQUISITION
300 N. ZEEB ROAD
ANN ARBOR, MI 48106

TRIM LINE