

Public Service Grant



2008

Annual Report

Alberta Hipps, Chairperson

Gwen Yates, Vice Chairperson

Juan Diaz
John Donahoo
Ronald Mallett
Edgar Mathis
Arnold Tritt

Public Service Grant 2008 Annual Report

Table of Contents

Executive Summary	3
PSG Funding History	4
Requested/Awarded	5
2007/2008 Funded Programs.....	6
Populations Served.....	11
Amount Awarded by Population.....	12
Clients by Population.....	13
Residual Funds.....	14
Looking to the Future.....	15

Executive Summary

Fiscal Year 2007/2008 brought many changes in the reorganization of the structure of government in the City of Jacksonville. The reorganization established the Grant Compliance Unit within the Recreation and Community Services Department. Along with other responsibilities, the Grant Compliance Unit administers the Public Service Grant Program.

A primary responsibility is administering the numerous contracts with non-profit agencies to provide services the City might otherwise need to provide directly. Most of the agencies provide direct services to clients. Their grant dollars allow them to equip recipients with necessary tools to facilitate their well being through intervention, education and opportunity.

The FY 2008 Mayor's Budget allocated \$2,546,193.00 in Public Service Grant dollars to fund 49 agencies, with 59 programs serving 483,954 citizens in need. These needs ranged from homelessness and low income, victims of abuse and neglect, adults with physical, mental and behavioral disabilities to residents of neighborhoods at high risk of crime.

With the City Council's Amended Chapter 118 Public Service Grant Appropriations, the independent Public Service Grant Council was created. The PSG Council is an appointed body responsible for the distribution of the public service grant appropriations of the City Council. All seven members of this council were confirmed by City Council by the August 19, 2008 City Council Meeting. They went to work immediately preparing for and making funding recommendations for the Fiscal Year 2009 budget. They provide a wealth of knowledge that will be used to catapult Public Service Grants to the next level.

Roslyn M. Phillips
Director
Recreation and Community Service Department

Nancy Kirts
Assistant Management Improvement Officer
Grant Compliance Unit

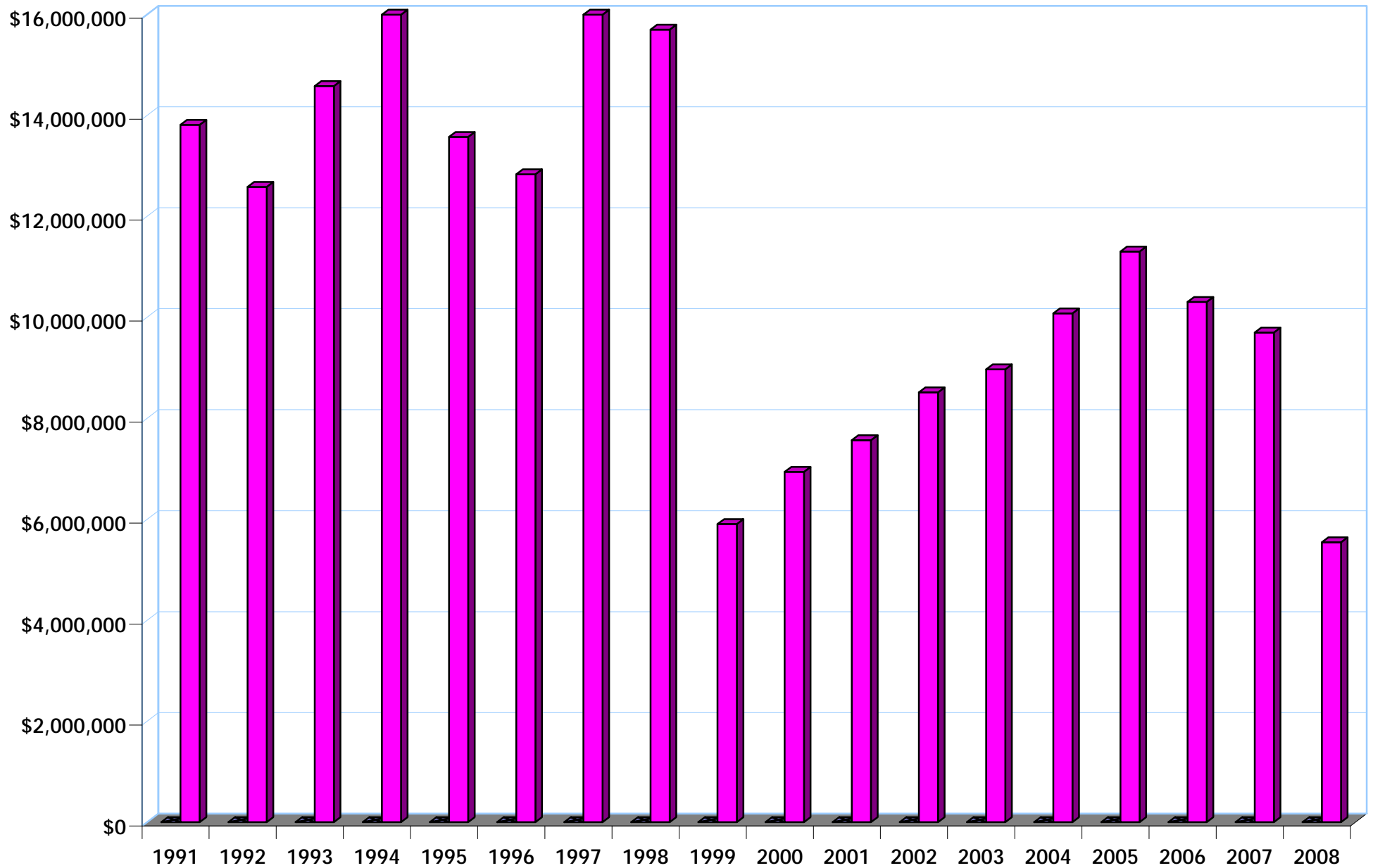
Sue Andrews
Human Services Planner

Sandy Arts
Human Services Planner

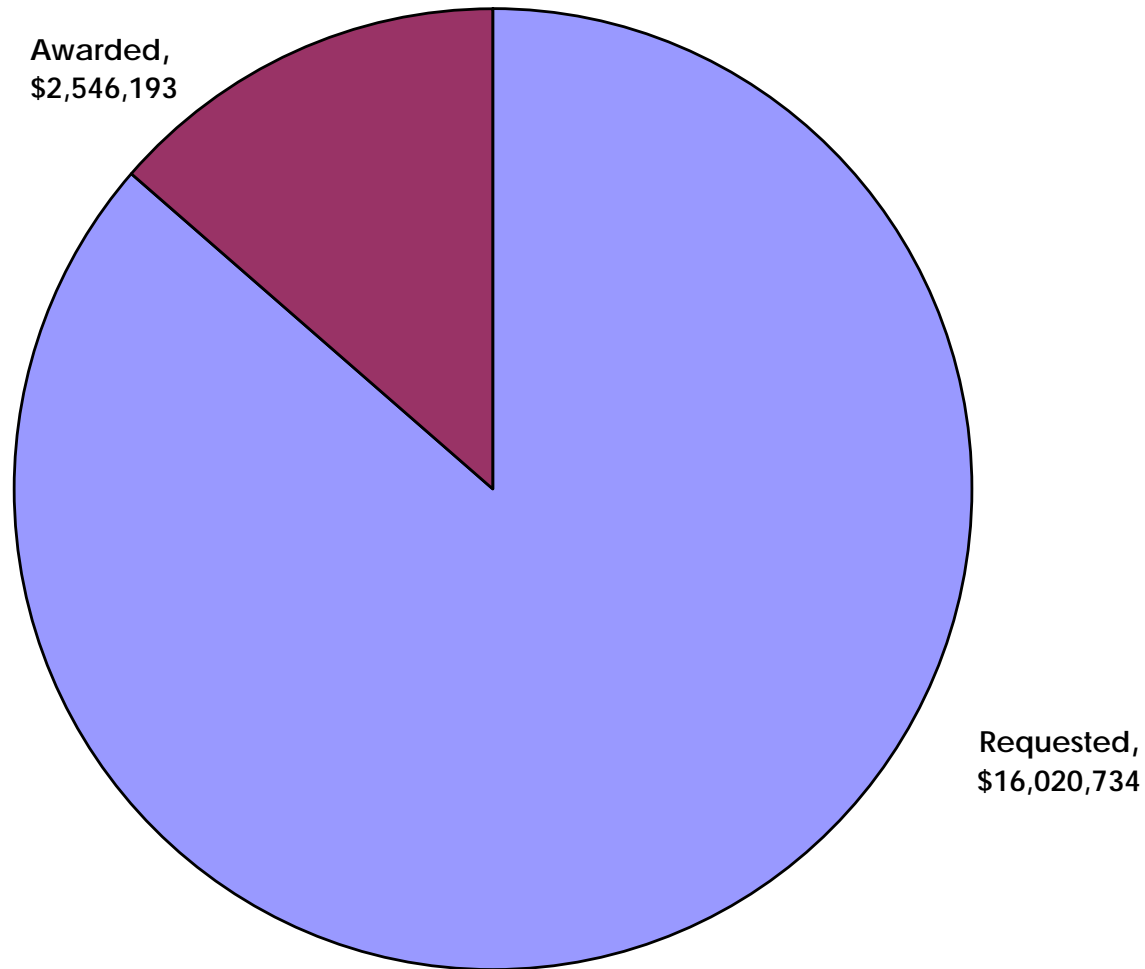
John Snyder
Human Services Planner

Linda Platte'
Administrative Aide

Public Service Grants Funding History



FY 2007/2008 Public Service Grant Funds Requested Vs Funds Awarded



** Represents only funding applied for through Public Service Grants and
Does not include Budget Line Items, Mental Health & Welfare, JEDC, Trust Funds

2007/2008 Public Service Grant

Funded Programs

Organization Name	Program	Funding
Alzheimer's Association NE FL Chapter	Alzheimer's Family Caregiver Assistance Program	\$ 15,270
Angelwood, Inc.	Sidesaddle Group Home	\$ 6,448
ARC Jacksonville, Inc.	Residential-Group Home	\$ 40,722
Beaches Council On Aging, Inc.	Dial A Ride	\$ 28,735
Bridge the Gap	Elderly Care	\$ 8,850
Catholic Charities Bureau, Inc.	Lawn Care Employment Program	\$ 19,845
Cerebral Palsy of Northeast Florida, Inc.	Adult Developmental Training Program	\$ 25,926
Clara White Mission, Inc.	Comprehensive Emergency Services	\$ 64,706
Community Connections of Jacksonville, Inc.	Families Learning Together	\$ 44,794
Community Connections of Jacksonville, Inc.	Davis Center Transitional Housing	\$ 45,473
Compassionate Families of Jacksonville, Inc.	Homicide Grief Recovery Program	\$ 16,289
Cultural Council of Greater Jacksonville	Art in Public Places Program	\$ 51,300

2007/2008 Public Service Grant

Funded Programs

Organization Name	Program	Funding
Daniel Memorial, Inc.	Project Prepare	\$ 33,935
Duval County Public Schools	Truancy Center	\$ 115,425
Emergency Services and Homeless Coalition of Jacksonville, Inc.	Leadership to End Homelessness	\$ 33,935
FCCJ	Independent Living for Adult Blind - ILAB	\$ 38,686
First Coast African American Chamber, Inc.	Minority Business Outreach Program	\$ 105,057
Fresh Ministries, Inc.	USA Ministries	\$ 101,352
Gateway Community Services	SAGES	\$ 40,001
Greater Jacksonville Area USO Council, Inc.	Support of Active Duty and Military	\$ 22,920
Grove House Supportive Services, Inc.	Brain Injury Program	\$ 30,164
Hart Felt Ministries, Inc.	Hart Felt Ministries	\$ 20,777
Help Center, Inc.	Transitional Living and Recovery	\$ 66,515
Hope Haven Association d/b/a Hope Haven Children's Clinic and Family Center	Access To Success	\$ 29,184
Hubbard House, Inc.	Emergency Services	\$ 93,547

2007/2008 Public Service Grant

Funded Programs

Organization Name	Program	Funding
I.M. Sulzbacher Center for the Homeless, Inc.	Emergency Shelter Services for the Homeless	\$ 93,879
Jacksonville Area Legal Aid, Inc.	Civil Legal Service	\$ 160,398
Jacksonville Area Legal Aid, Inc.	Mental Health Advocacy	\$ 34,628
Jacksonville Historical Society, Inc.	Heritage Publication	\$ 9,658
Jacksonville Historical Society, Inc.	Heritage Education	\$ 30,165
Jacksonville Speech and Hearing, Inc.	Audiology	\$ 49,545
L'Arche Harbor House, Inc.	Community Living	\$ 19,004
Learn To Read	Jacksonville Reads	\$ 32,038
Lutheran Social Services of N.E. FL, Inc.	Representative Payee Program	\$ 20,361
Lutheran Social Services of N.E. FL, Inc.	Second Harvest Food Bank	\$ 151,079
Lutheran Social Services of N.E. FL, Inc.	Refugee Education Program	\$ 14,252
Mission House, Inc.	Case Management	\$ 15,967
North Florida School of Special Education, Inc.	Adult Student Transition	\$ 14,252

2007/2008 Public Service Grant

Funded Programs

Organization Name	Program	Funding
Northeast Florida Community Action Agency, Inc.	TEFAP	\$ 34,877
Northeast Florida Healthy Start Coalition, Inc.	Azalea Project	\$ 57,713
Opportunity Development, Inc./Independent Living Resource Center of N.E. FL	Deaf Consumer Program	\$ 17,461
Operation New Hope	Ready 4 Work	\$ 132,300
Pine Castle, Inc.	Training, Education and Support Services	\$ 89,589
Presbyterian Social Ministries, Inc.	Emergency Cold Night Shelter	\$ 8,144
Prisoners of Christ, Inc.	Continuing Services Staff	\$ 10,935
River Region Human Services, Inc.	St. Johns Horizon House	\$ 41,477
Ronald McDonald House of Jacksonville, Inc.	Ronald McDonald House	\$ 23,755
Salvation Army, Inc.	Senior Center Telephone Reassurance	\$ 3,771
Salvation Army, Inc.	Meals For Homeless and Transient	\$ 20,976
Salvation Army, Inc.	Senior Center Emergency Food Pantry	\$ 7,695
Salvation Army, Inc.	Local Disaster Services	\$ 6,033

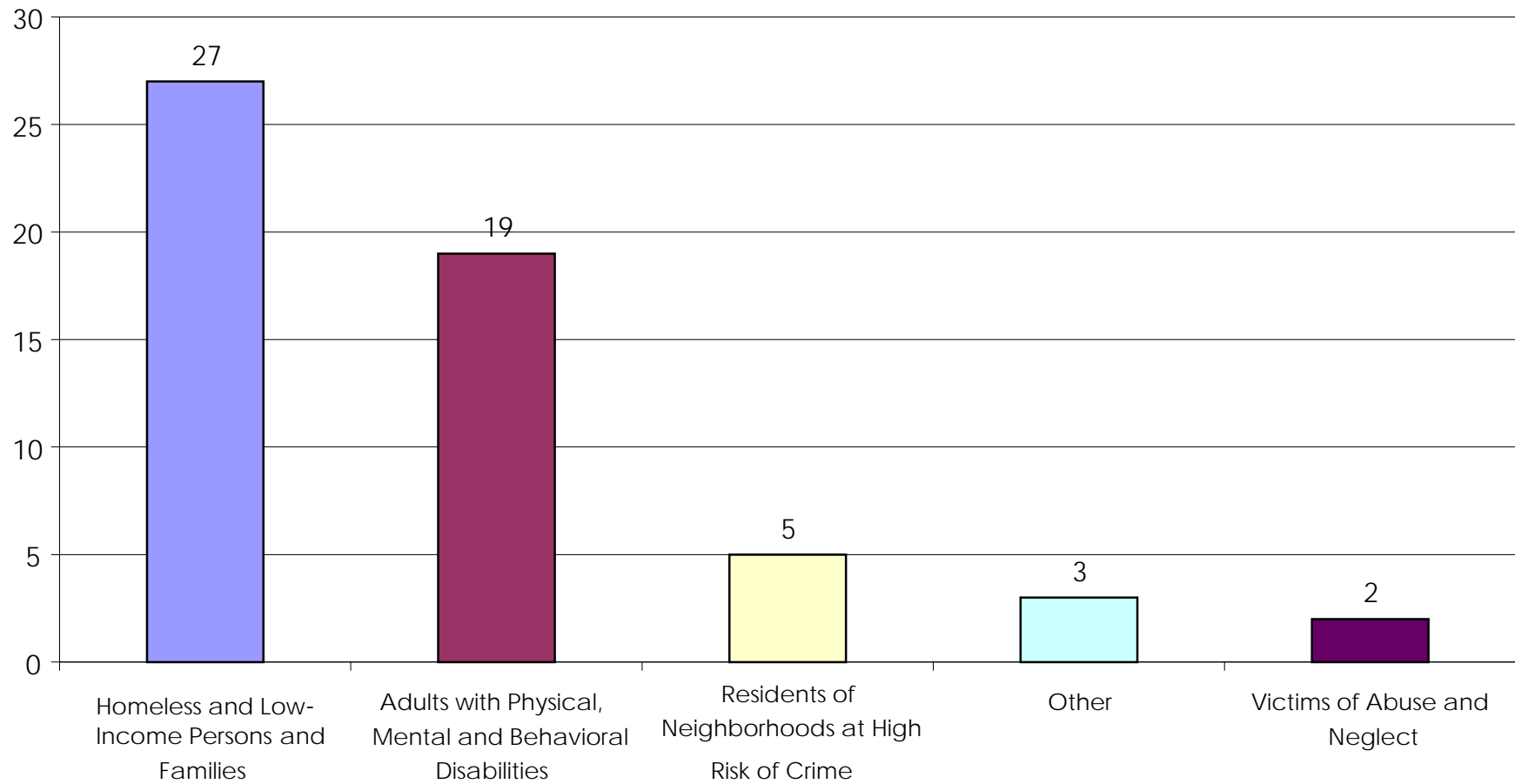
2007/2008 Public Service Grant

Funded Programs

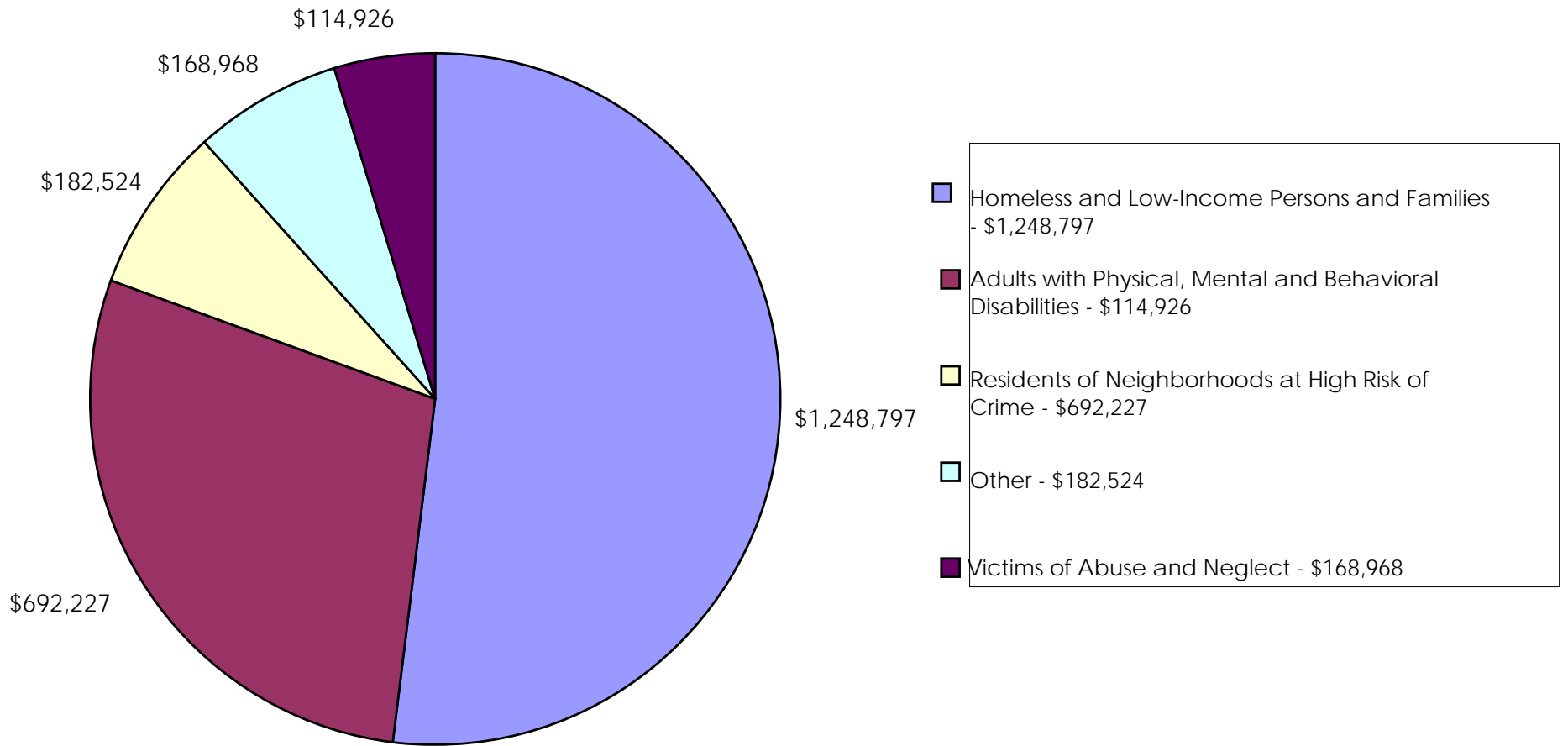
Organization Name	Program	Funding
St. Mathews Baptist Church	Volunteer Dental Clinic	\$ 47,628
United Way of Northeast Florida, Inc.	Real Sense Prosperity Campaign	\$ 38,475
United Way of Northeast Florida, Inc.	United Way 211	\$ 16,968
Urban Jacksonville, Inc.	Meals on Wheels	\$ 135,740
Volunteer Jacksonville, Inc.	Managing Unaffiliated Volunteers In Disaster/VOAD	\$ 30,542
WE CARE Jacksonville, Inc.	WE CARE	\$ 55,653
Women's Center of Jacksonville	Community Education	\$ 21,379

Total \$ 2,546,193

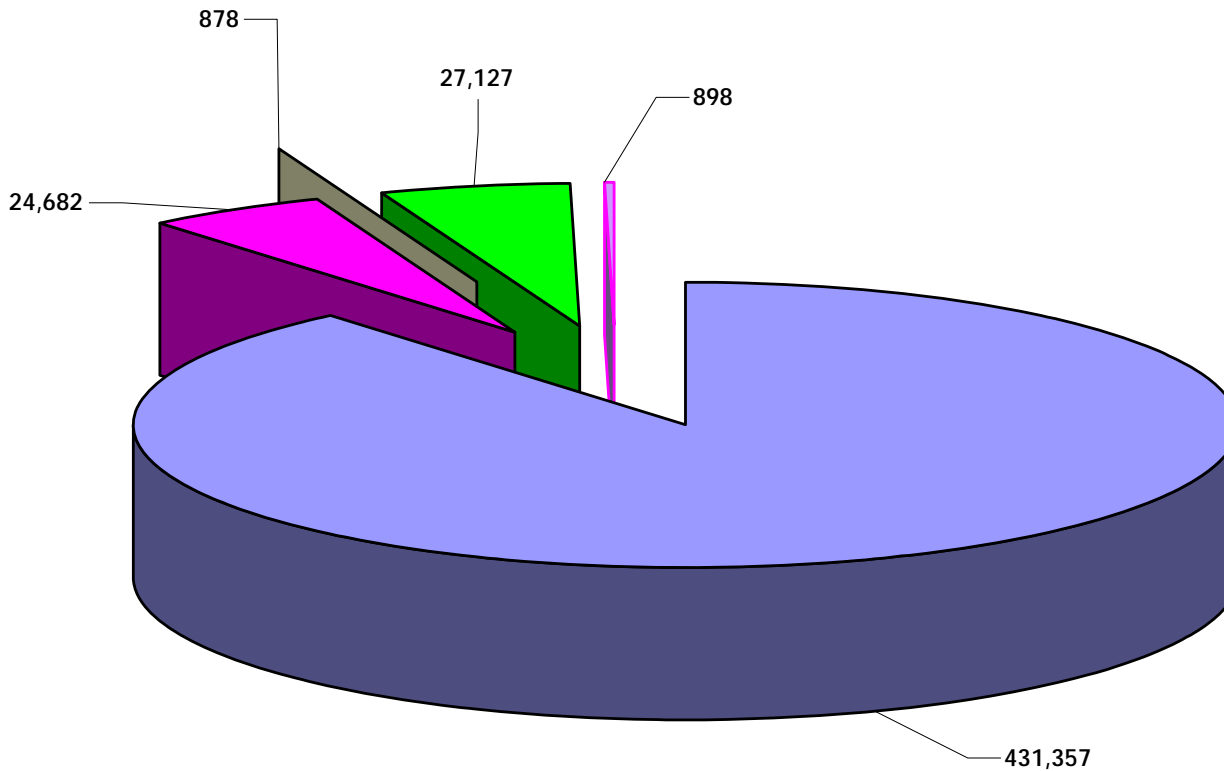
Population Served By Number of Programs



Amount Awarded by Population



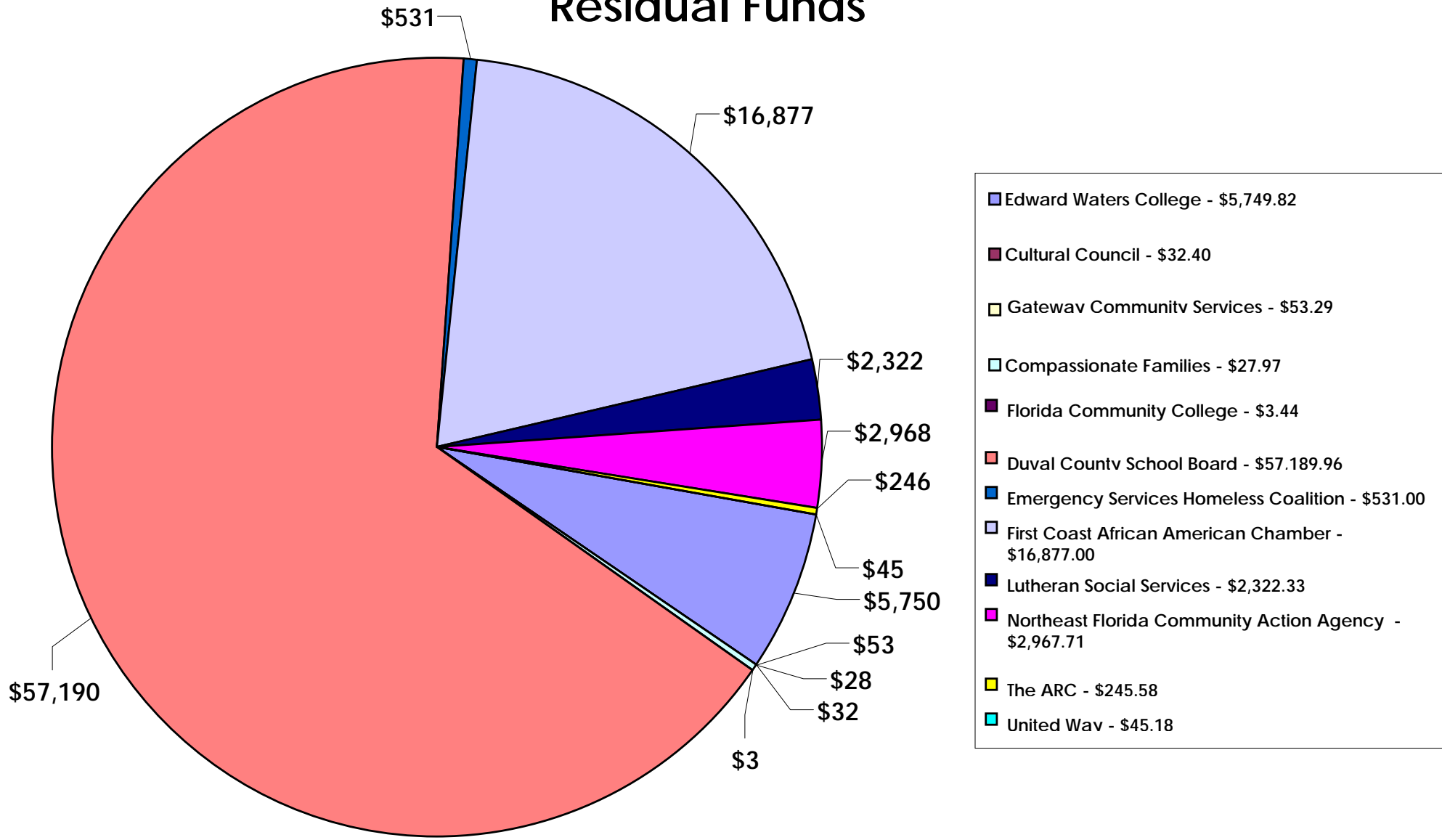
Number of Clients per Population



- Homeless and Low-Income Persons and Families - 431,357
- Adults with Physical, Mental and Behavioral Disabilities - 24,682
- Residents of Neighborhoods at High Risk of Crime - 878
- Other - 27,127
- Victims of Abuse and Neglect - 898

2007/2008 Public Service Grant

Residual Funds



Looking to the Future

Public Service Grant Council:

Alberta Hipps (Chairperson)
Gwen Yates (Vice Chairperson)
Juan Diaz
John Donahoo
Ronald Mallett
Edgar Mathis
Arnold Tritt

Public Service Grant Council meets:
Third Tuesday of Every Month
10:00 AM – 12:00 PM
Eighth Floor Meeting Room of the Ed Ball Building

Any changes in meeting schedule will be posted accordingly.

Priority Populations: Ordinance 2008-87-E provides for the City Council to establish "Priority Populations" as part of the criteria for awarding public service grants. Priority Populations set for 2008-2009 fiscal year are (1) Homeless and Low-income Persons and Families, (2) Victims of Abuse and Neglect, (3) Adults with Physical, Mental, and Behavioral Disabilities, (4) Residents of Neighborhoods At Risk of Crime, and (5) Improvements to the Quality of Life Through Cultural Activities.

Priority Populations will be recommended annually by the Public Service Grant Council as a mandatory requirement for each new funding cycle and approved through the City Council.

Quarterly Newsletter: Highlighting the good works of our non-profits, sharing information from the Public Service Grant Council, notifications of any pertinent information of upcoming events.

On-Line application: The Grant Compliance Unit will be working with the Grants Administrator and Information Technology to bring the Public Service Grant Application online. We will have a pilot group to test the process before fully launching for the 2010 application cycle.

Jacksonville Journey Funding: Late in 2007, Mayor John Peyton convened “The Jacksonville Journey: Take a Step Initiative” in response to two years of record-breaking violent crime that showed no signs of stopping. Aimed at turning the tide of violence in the city, this effort was created to address not just law enforcement and deterrence, but also the root causes of crime, through prevention, rehabilitation and targeted intervention.

Nearly a third of adult prisoners were unemployed in the month before their arrest as compared with 6.6% in Duval County. Post-incarceration, unemployment rates of ex-offenders is estimated between 25-40%. Joblessness has been broadly linked to recidivism rates.

The following FY 2009 Jacksonville Journey programs and corresponding funding have been assigned to the Grant Compliance Unit for programmatic, fiscal, and contractual oversight.

Jacksonville Journey Funded Program	Amount
Jacksonville Commitment	\$ 1,000,000.00
Ex-Offender Re-Entry Portal	\$ 600,000
Training and Re-Entry for Ex-Offenders	\$ 553,500
Ex-Offender Employment Program	\$ 356,250
Juvenile Assessment Center	\$ 328,236
1,000 in 1,000	\$ 100,000