

1 Introduced by the Council President at the request of the Context  
2 Sensitive Streets Standards Committee and Substituted by the  
3 Transportation, Energy and Utilities Committee:  
4  
5

6 **ORDINANCE 2017-807-E**

7 AN ORDINANCE CREATING A NEW PART 16 (TRUCK  
8 ROUTE REGULATIONS), CHAPTER 804 (JACKSONVILLE  
9 TRAFFIC CODE), ORDINANCE CODE, TO DESIGNATE  
10 PREFERRED TRUCK ROUTES AND RESTRICTED ROADS  
11 FOR THE CITY OF JACKSONVILLE; DESIGNATING THE  
12 PLANNING AND DEVELOPMENT DEPARTMENT TO PROVIDE  
13 AN EDUCATIONAL COMPONENT; DIRECTING CODIFIERS  
14 TO INCORPORATE THE CITY OF JACKSONVILLE  
15 REGULATED TRUCK ROUTE SYSTEMS MAP; DIRECTING  
16 THE JACKSONVILLE SHERIFF'S OFFICE TO ISSUE  
17 WARNINGS FOR THE FIRST 6 MONTHS AFTER THE  
18 EFFECTIVE DATE OF THIS ORDINANCE; PROVIDING FOR  
19 AN EFFECTIVE DATE.  
20

21 **WHEREAS**, the City of Jacksonville ("City") contains numerous  
22 commercial truck traffic generators and destinations including the  
23 Jacksonville Port Authority's ("JAXPORT") international seaports,  
24 industrial and commercial sites, warehouses, intermodal train yards  
25 and the Jacksonville International Airport ("JIA"); and

26 **WHEREAS**, truck movement is essential to providing the vital  
27 goods and services citizens need in daily interactions; and

28 **WHEREAS**, the efficient movement of trucks benefits residents  
29 by reducing the cost of shipping goods and contributes to the  
30 economic growth of the municipality; and

1       **WHEREAS**, by establishing appropriate commercial truck routes  
2 designed with input from the trucking industry and the affected  
3 community, the City can help ensure that mobility for all roadway  
4 users is preserved, freight and goods can move safely and  
5 efficiently, and the local economy continues to grow; and

6       **WHEREAS**, the purpose of a commercial truck route system is to  
7 provide guidelines that balance the needs of interstate commerce  
8 and the trucking industry with the desire to minimize the impacts  
9 of trucks on sensitive land uses; and

10       **WHEREAS**, a truck route system does not prohibit trucks from  
11 using all roads within a municipality, but it does require the use  
12 of certain roads that are more suitable to such commercial truck  
13 traffic to the greatest extent possible, and also minimizes truck  
14 intrusion into sensitive areas to the extent possible; and

15       **WHEREAS**, *Goal 10* of the Transportation Element of the *2030*  
16 *Comprehensive Plan*, entitled, "Intermodal Transportation Systems,"  
17 states that Interagency coordination and implementation of an  
18 intermodal transportation system which integrates highway, mass  
19 transit, port, airport, rail, and other transportation modes and  
20 facilities shall be supported; and

21       **WHEREAS**, *Policy 10.6.4* of the Transportation Element of the  
22 *2030 Comprehensive Plan* provides that the City shall designate  
23 truck routes to minimize the impact of traffic through residential  
24 areas and maximize the flow of intermodal shipment of goods; and

25       **WHEREAS**, Section 32.702 (a), Ordinance Code, authorizes the  
26 Context Sensitive Streets Standards Committee to review, revise and  
27 recommend amendments to the Ordinance Code relating to  
28 transportation and traffic engineering; and

29       **WHEREAS**, Section 32.702 (f), Ordinance Code, also authorizes  
30 the Context Sensitive Streets Standards Committee to adopt policies  
31 with respect to freight, and set guidelines for those streets

1 classified as "Major Truck Streets" hereafter, these streets are  
2 identified as "Preferred Truck Routes"; and

3 **WHEREAS**, during a noticed public meeting held on July 27,  
4 2016, the Context Sensitive Streets Standards Committee ("CSSSC")  
5 voted to designate Truck Routes for the City of Jacksonville (the  
6 minutes of the July 27, 2016, CSSSC meeting are attached and  
7 incorporated as **Exhibit 1**); and

8 **WHEREAS**, from March 2018 to September 2018, several noticed  
9 public meetings were held with full participation from the members  
10 of the trucking industry, City staff and citizens; now therefore

11 **BE IT ORDAINED** by the Council of the City of Jacksonville:

12 **Section 1. Creating a new part 16 (Truck Route**  
13 **Regulations), Chapter 804 (Jacksonville Traffic Code), Ordinance**  
14 **Code.** Part 16 (Truck Route Regulations), Chapter 804 (Jacksonville  
15 Traffic Code), *Ordinance Code*, is hereby created to read as  
16 follows:

17 **CHAPTER 804. JACKSONVILLE TRAFFIC CODE.**

18 \* \* \*

19 **PART 16. TRUCK ROUTE REGULATIONS**

20 **Sec. 804.1601 - Purpose & Intent.**

21 The City of Jacksonville ("City") recognizes the various  
22 changes occurring to the vehicle transportation network, and  
23 acknowledges the need to examine its unique truck traffic  
24 situation, and determine a solution that mutually serves the unique  
25 needs of the local community. The purpose of this system is to  
26 establish truck routes within the City that promote compatible land  
27 uses, enhance public safety, and minimize pavement maintenance and  
28 reconstruction costs in conjunction with the following:

29 (a) Provide safe roadways for vehicles, bicyclists, and  
30 pedestrians;

31 (b) Provide truck routes that follow the guidance contained

1 in the City's Transportation Element of the 2030  
2 *Comprehensive Plan*;

3 (c) Designate acceptable routes for trucks to access the  
4 Strategic Intermodal System (SIS) and State Highway  
5 System (SHS) in order to complete extended distance  
6 travel;

7 (d) The City Traffic Engineer to install signage designating  
8 the truck route system as needed;

9 (e) Provide for the transportation of freight on roads (truck  
10 routes) best designed to handle the additional pavement  
11 stress in order to minimize the amount of maintenance and  
12 repair costs required on Jacksonville streets;

13 (f) Reduce the use of regulated trucks traveling on  
14 restricted roads except for delivery and pickup;

15 (g) Protect residential neighborhoods from:

16 (1) Excessive truck traffic creating greater hazards to  
17 pedestrians, bicyclists, and children;

18 (2) Increased congestion and noise pollution from truck  
19 traffic; and

20 (3) Pavement pot holes, raveling, rutting, or other  
21 pavement distress conditions that cause hazards to  
22 motorcyclists, bicyclists, pedestrians, motorists  
23 and local residents;

24 (h) Procedures for enforcing truck route violations;

25 (i) During an emergency, the Director of Public Works or  
26 his/her designee shall have the authority to further  
27 restrict loads or create detours for vehicles traveling  
28 on City roads.

29 **Sec. 804.1602 - Definitions.**

30  
31 *Gross Weight* means the net weight of a motor vehicle in pounds

1 plus the weight of the load carried by it, pursuant to F.S.  
2 §320.01(7).

3 *Regulated truck* means a truck having a gross vehicle weight  
4 which exceeds 26,001 pounds, and is designed for the specific  
5 purpose of transporting freight. A regulated truck does not  
6 include those trucks that are used for government, utility or  
7 solid waste purposes.

8 *Truck route system* means those streets that are defined and  
9 identified as truck routes on the City of Jacksonville Regulated  
10 Truck Route System Map as found at the end of this part, and  
11 described below:

12 (a) *Preferred truck routes (Blue)* means those routes or roads  
13 designated for travel by regulated trucks. Regulated  
14 trucks are encouraged to use Preferred Truck Routes  
15 (Blue) as the primary means of travel within  
16 Jacksonville.

17 (b) *Restricted roads (Red)* means those routes or roads that  
18 are prohibited for travel or use by regulated trucks.

19 (c) *Non-regulated truck routes (Gray)* means those routes or  
20 roads that are not designated as a Preferred truck route  
21 (Blue) or Restricted Road (Red). Regulated trucks are  
22 permitted to travel on these non-regulated truck routes  
23 (Gray).

24 *State Highway System (SHS)* means all roadways that the Florida  
25 Department of Transportation operates and maintains; the SHS  
26 consists of the Florida Intrastate Highway System and other state  
27 roads; all streets under the jurisdiction of the Florida Department  
28 of Transportation are truck routes.

29 *Strategic Intermodal System (SIS)* means Florida's  
30 transportation system composed of facilities and services of  
31 statewide and interregional significance, including appropriate

1 components of all modes.

2       **Sec. 804.1603 - Truck Route Selection Criteria and Design**  
3 **Characteristics.**

4       The selection and designation of truck routes shall be based  
5 on the selection criteria as set forth in this Section.

6       (a) **Land Uses/Truck Trip Generators.** The future land use  
7 designation may indicate current and future trucking  
8 dependent development such as industrial uses and/or  
9 heavy commercial uses, seaports, and airports. Industrial  
10 and commercial development may routinely generate truck  
11 traffic, either for deliveries or as part of their  
12 regular business activities. While not practical to  
13 exclude trucks from all residential neighborhoods,  
14 regular truck routes should avoid areas that are  
15 predominantly residential, particularly single family  
16 neighborhoods, or areas where there is high pedestrian  
17 activity.

18       (b) **Street Classifications.** Preferred truck routes should  
19 reflect current truck access patterns, and should not  
20 attract additional trucks to streets not currently used  
21 by trucks. The City of Jacksonville Regulated Truck Route  
22 System Map depicts the existing state and local roadway  
23 facilities marked with the designated Preferred Routes  
24 (Blue) and Restricted Roads (Red) for Jacksonville.

25       (c) **Lane Widths.** In order for roadways to be compatible with  
26 regulated trucks they should have travel lanes that are  
27 wide enough to accommodate such vehicles. Lane width on  
28 truck routes may be 12 feet, however 11 feet is  
29 acceptable when truck volume is less than 10%.

30       (d) **Bridge Locations.** In order for roadways containing  
31 bridges to be compatible with regulated trucks, the

1 amount of weight a bridge can handle dictates whether a  
2 road has the ability to serve as a truck route. The  
3 FDOT Office of Maintenance provides data on bridges  
4 throughout the state and has established vehicle  
5 weight restrictions for each bridge. Truck routes may  
6 only be allowed on roads whose bridges have been rated by  
7 FDOT to support the weight limit for the expected truck  
8 type designated for that roadway.

9 (e) **Speed Limits.** The speed limit of a roadway tends to  
10 reflect the character of the roadway. Roads with higher  
11 speed limits are, generally, free flowing and have  
12 limited access. Roadways with lower speed limits are  
13 generally less free flowing and have a greater number of  
14 driveways and intersections.

15 **Sec. 804.1604 - City of Jacksonville Regulated Truck Route**  
16 **System Map for Preferred Truck Routes (Blue) and Restricted Roads**  
17 **(Red) .**

18 All regulated trucks within the City shall be operated only  
19 over and along the truck routes as established and depicted in the  
20 City of Jacksonville Regulated Truck Route System Map which is  
21 found at the end of this Part.

22 *Operation on Restricted Roads (Red).* The driver of a regulated  
23 truck may travel on a Restricted Road (Red) for the primary purpose  
24 of delivery and pickup. The driver of the regulated truck must  
25 return to the Preferred (Blue) or non-regulated (Gray) truck route  
26 network by the shortest possible distance after completion of the  
27 delivery and/or pickup.

28 **Sec. 804.1605 - Signage.**

29 The City Traffic Engineer is authorized to install adequate  
30 signage placed on Preferred (Blue) truck routes and Restricted  
31 roads (Red), as needed.

1           **Sec. 804.1606 - Documented Records required for operation on a**  
2 **Restricted road (Red); enforcement; penalties.**

3           (a) Any person driving or in charge or control of any  
4 regulated truck operating on a Restricted Road (Red)  
5 shall be prepared to present for the inspection to the  
6 Jacksonville Sheriff's Office ("JSO") officers, the  
7 truck's log book, weight slips, delivery slips, or other  
8 written records of the regulated truck's origin and  
9 destination to justify the operation on the Restricted  
10 Road (Red).

11           (b) Due to the transient nature of these actions, a violation  
12 of this Section shall constitute an irreversible and  
13 irreparable violation and will result in the immediate  
14 issuance of a civil citation by a JSO officer pursuant  
15 to Section 804.301, Ordinance Code and Section 636.204,  
16 Ordinance Code.

17           (c) A violation of this Section shall constitute a Class C  
18 offense.

19           **Section 2. Designating the Planning and Development**  
20 **Department to provide an educational component.** The Planning and  
21 Development Department shall coordinate with the Jacksonville  
22 Sheriff's Office to develop a program to educate the public and  
23 regulated trucking industry about the location of Preferred truck  
24 routes.

25           **Section 3. Directing Codifiers to incorporate map.** The  
26 codifiers are hereby directed to incorporate the City of  
27 Jacksonville Regulated Truck Route System Map, attached hereto as  
28 **Exhibit 2**, at the end of the new Part 16 (Truck Route Regulations),  
29 Chapter 804 (Jacksonville Traffic Code).

30           **Section 4. Directing the Jacksonville Sheriff's Office to**  
31 **issue warnings for the first 6 months after the effective date of**



1 **this Ordinance.** The Jacksonville Sheriff's Office shall issue  
2 warnings for a time period that shall expire 6 months from the  
3 effective date of this ordinance, wherein the Planning and  
4 Development Department shall prepare a report to be delivered to  
5 the Context Sensitive Streets Standards Committee which describes  
6 the number of warnings issued during the 6-month timeframe.

7 **Section 5. Effective Date.** This ordinance shall become  
8 effective upon signature by the Mayor or upon becoming effective  
9 without the Mayor's signature.

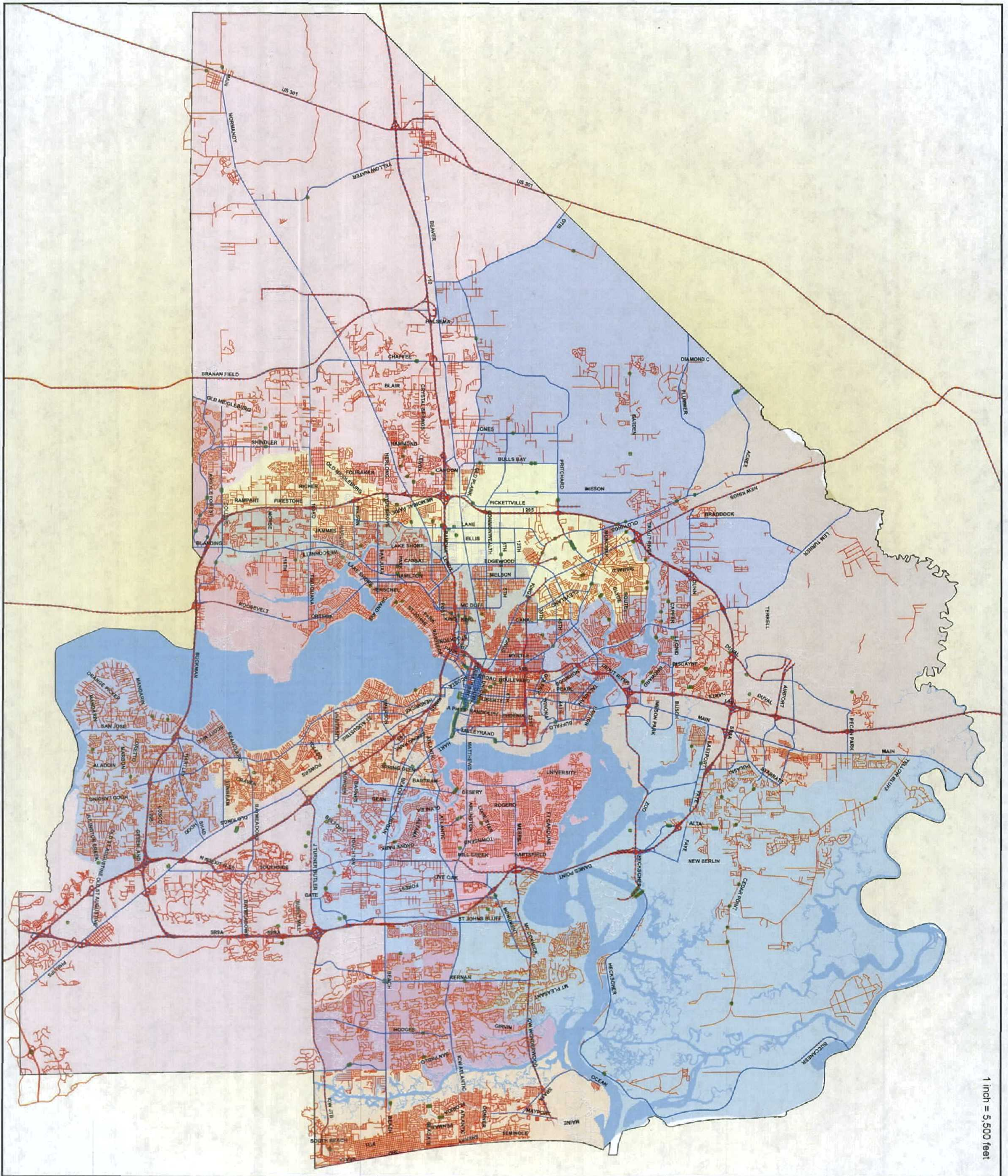
10  
11 Form Approved:

12  
13 /s/ Shannon K. Eller

14 Office of General Counsel

15 Legislation prepared by: Cherry Shaw Pollock

16 GC-#1260412-v1-2017-807.docx



1 inch = 5,500 feet

# TRUCK ROUTES

Map Scale: 1 inch equals 5,500 feet at ANSI E.  
 Created: Month 00th, 2012  
 Developed by: COJ Planning and Development GIS Section  
 G:\Transportation\GIS\MapServer\trucks.mxd  
 This document is intended for illustrative purposes only.

0 0.15 0.3 0.6 0.9 1.2 Miles

**Legend**

- SIS Highway
- Preferred Routes
- Restricted Routes
- Constrained Bridges
- Rivers
- Council Districts

**Exhibit 2**  
**Page 1 of 1**

