



Summit Strategies Group

8182 Maryland Avenue, 6th Floor

St. Louis, Missouri 63105

314.727.7211

International Equity Search

**City of Jacksonville
Police & Fire Pension Fund**

June 10, 2016

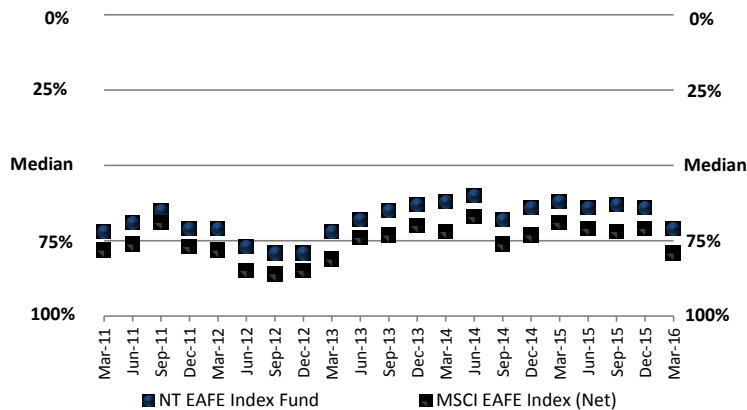
EXECUTIVE SUMMARY

- Summit Strategies Group is presenting this active International (Developed Markets) Manager Search for the City of Jacksonville Police & Fire Pension Fund's consideration.
- Although the Plan's International Equity Composite has outperformed the benchmark over the last 3-5 years due to manager changes, the Composite's peer ranking remains low.
- Approximately 34% of the International Equity Composite is invested in the Northern Trust EAFE Index Fund.
 - Active management has historically outperformed passive investment in the international equity space.
- Summit recommends the current 5% target weight to passive international developed equity be reduced to 1%, with the remaining 4% going to a new active manager.
 - 1% is left passively invested for liquidity purposes.
- Summit has presented four active managers for your consideration: Aristotle, Causeway, City of London, and Trinity Street. Each brings diversifying factors and a higher expected return to the other managers currently in the portfolio: Silchester, Baillie Gifford, and Acadian, as shown in the presentation.
- Summit recommends the FAIC & Board interview all four managers.

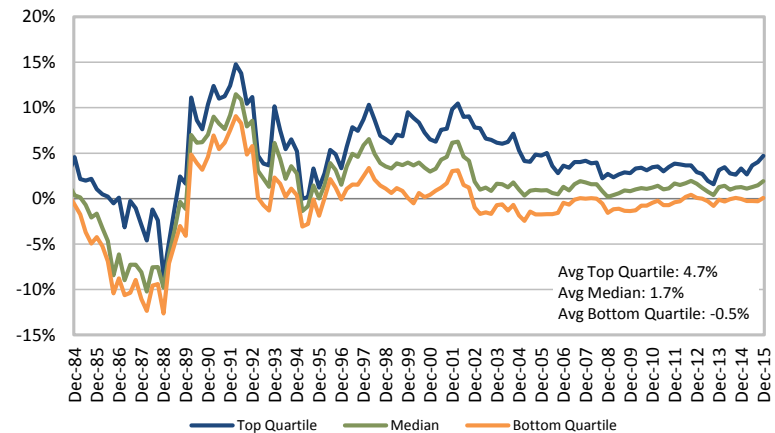
EXECUTIVE SUMMARY (CONTINUED)

- Over the trailing 3- and 5-year periods, the Jacksonville Police & Fire Pension Fund’s International Equity composite has outperformed its benchmark but lagged peers.
 - The primary reason for this peer underperformance has been a significant passive allocation (NT EAFE Index Fund) in a period when active management in the international equity space has paid off.
 - As evidenced below, a passive allocation has consistently ranked near the bottom quartile of the international equity peer universe over the past eight years, based on rolling 3-year performance. Additionally, the median active manager in the international developed equity space has historically added value over the benchmark.
- Summit believes that increasing active exposure within the international equity fund could serve to enhance performance and provide excess return correlation benefits for the portfolio.

Rolling 3-Year Universe Ranks vs. International Equity Universe



Rolling 3-Year Relative Performance Developed International Equity Manager Universe



ARISTOTLE CAPITAL MANAGEMENT, LLC – INTERNATIONAL EQUITY

FIRM DETAILS

Address: 11100 Santa Monica Blvd.
Suite 1700
Los Angeles, CA 90025

Phone: 310.478.4005

Asset Class: Intl Value Equity

Benchmark: MSCI EAFE Value Index (net)

Founded: 1959

Ownership: 70% employee owned;
30% owned by two MetWest Ventures Professionals

Assets Under Management: \$9.6 billion

PRODUCT DETAILS

Inception: January 2008

Assets Under Management: \$352 million

Vehicles Offered: SA, MF

Separate Account Minimum: \$10 million

Mutual Fund Minimum: \$25,000

Portfolio Managers/Dual Role PMs: 3

Avg. Yrs of Experience: 26

Avg. Yrs at Firm: 9

Research Analysts: 7

Avg. Yrs of Experience: 14

Avg. Yrs at Firm: 7

Fee Schedule (SA): 0.85% on first \$25 million
0.65% on next \$75 million
0.55% on next \$200 million
0.40% on the balance

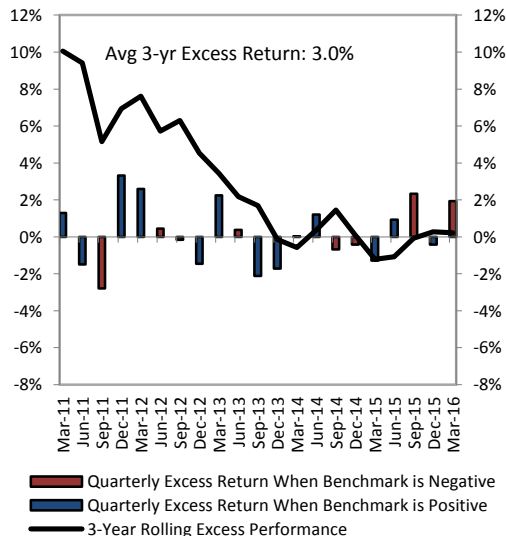
(MF): 1.10% on all assets

CHARACTERISTICS

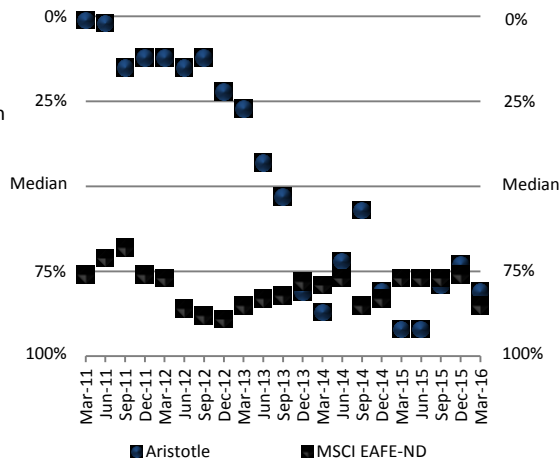
	Portfolio	Benchmark
No of Securities:	37	928
Portfolio Turnover:	42%	N/A
Dividend Yield:	2.2%	3.5%
Equity P/E:	22.1x	15.4x
P/B Ratio:	3.8x	1.5x
# of Countries:	15	21
Avg Mkt Cap:	\$52.0 billion	\$52.4 billion

ROLLING PERFORMANCE AND RANKINGS

Three-Year Rolling/Quarterly Excess Performance vs. MSCI EAFE Index (net)



Manager vs. International Core Universe Rolling Three-Year Periods



QUALITATIVE OVERVIEW

- Effective January 1, 2012, Reed Conner & Birdwell, LLC (RCB), a long-standing Los Angeles based investment advisor, combined its business with Aristotle Capital Management, LLC. The integration of Aristotle and RCB began after strategic partner MetWest Ventures, a multi-strategy asset management platform, and other key Aristotle professionals acquired a controlling interest in the affiliate firms in June 2011.
- The investment team is composed of ten members. Seven individuals on the team have research analyst responsibilities, and three analysts also serve as the "Lead Strategist" for the firm's other equity strategies. Analysts formally discuss companies and the portfolios on a regular basis (typically weekly) and more frequently on an informal basis. Although research and industry coverage is team-oriented, each strategy has a Lead Strategist who is ultimately responsible for the strategy. Portfolio Manager, Sean Thorpe, is the Lead Strategist for the International Equity strategy.
- The investment process is based on the goal of identifying and investing in high-quality businesses that are trading at discounted relative valuations. The process is long-term in holding period and emphasizes companies that have structural competitive advantages. The firm seeks to invest with companies which exhibit: (1) a solid balance sheet; (2) management strength and interests aligned with shareholder value; (3) clear competitive advantages; and (4) typically a 5-year operating history.
- Turnover is generally around 20% and the portfolio typically holds 35-45 names. By investing in high-quality companies focused on sustainable cash flow, the strategy will tend to perform well in sideways to rational markets and lag in recovery or low-quality periods.

QUALITATIVE RANKING

FIRM	-2	-1	0	1	2
Empl Ownership					●
Mgmt Consistency				●	
Integration				●	
Cost				●	
Litigation				●	
Responsiveness				●	
TOTAL				+5	

PERSONNEL	-3	-2	-1	0	1	2	3
Staff Depth							●
Experience							●
Stability							●
Support							●
TOTAL							+8

PRODUCT	-2	-1	0	1	2
History				●	
Size				●	
Growth				●	
Asset Split				●	
TOTAL				+5	

PHILOSOPHY	-3	-2	-1	0	1	2	3
Philosophy							●
Purchase Discipline							●
Sell Discipline							●
Research							●
Country Allocation							●
Decision Process							●
Characteristics							●
TOTAL							+10

TOTAL QUALITATIVE SCORE: +28



ARISTOTLE CAPITAL MANAGEMENT, LLC – INTERNATIONAL EQUITY

Key Differentiator: A solid fundamental research effort that employs an eclectic/nimble relative value approach focused on identifying high quality, world class businesses led by proven, established management at compelling valuations.

- **Investment Thesis:**

- **Research** – This is a very research (rather than PM) driven strategy and, as such, Howard Gleicher and the other very experienced analysts are all key to the strategy’s success. This team of 10 (seven analysts, three PMs) is dedicated and focused on value investing. The analysts average 14 years of experience while the PMs average 26 years of experience.
- **Quality at a Reasonable Price** – The process focuses on intrinsic value giving the strategy more latitude to find value in both historically cheap stocks as well as stocks deemed to be cheap relative to future growth prospects. The strategy is focused on high-quality stocks trading at depressed valuations with a catalyst. The catalyst offers protection against potential value traps by focusing on companies with expected fundamental improvement. The strategy has the flexibility to move down the quality spectrum (deeper value) if valuations are not compelling.
- **Co-Investment** – Key professionals currently have over \$15 million invested in Aristotle firm strategies aligning their interest with clients.

- **Risks/Concerns:**

- **Team Continuity** – Geoffrey Stewart and Sean Thorpe have managed the International Equity strategy since its inception in 2008 with Reed Connor & Birdwell, LLC (RCB). With the combination of RCB and Aristotle in early 2012, Mr. Stewart and Thorpe combined efforts with Howard Gleicher. Howard Gleicher brings extensive experience to the group but the newly assembled team has only been working together for the last three years.

- **Performance Review and Expectations:**

- During the first quarter 2016, the strategy outperformed the MSCI EAFE Value-ND Index by 286 bps, gross of fees. For the trailing year, the strategy has added 926 bps over the index. An overweight to consumer staples combined with positive security selection in the technology, consumer discretionary and utilities drove outperformance for both the quarter and the year.
- The strategy is value oriented, but maintains a high-quality hurdle. We expect this to result in downside protection and reasonable upside participation. Aristotle expects 250 bps of outperformance over the next 5-7 years.

CAUSEWAY CAPITAL MANAGEMENT, LLC – INTERNATIONAL VALUE EQUITY

FIRM DETAILS

Address: 1111 Santa Monica Blvd.,
15th Floor
Los Angeles, CA 90025

Phone: 310.231.6100

Asset Class: Intl Value Equity

Benchmark: MSCI EAFE Index (net)

Founded: 2001

Ownership: 100% employee owned

Assets Under Management: \$40.0 billion

PRODUCT DETAILS

Inception: June 2001

Assets Under Management: \$21.5 billion

Vehicles Offered: SA, CF, MF

Separate Account Minimum: \$250 million

Commingled Fund Minimum: \$50 million

Mutual Fund Minimum (CIVIX): \$1 million

Portfolio Managers/Dual Role PMs: 8

Avg. Yrs of Experience: 21

Avg. Yrs at Firm: 12

Research Analysts: 12

Avg. Yrs of Experience: 7

Avg. Yrs at Firm: 2

Fee Schedule (SA): 0.75% on first \$10 mm
0.65% on next \$40 mm
0.50% on the balance

(CF): 0.90% on first \$10 mm
0.80% on next \$40 mm
0.65% on next \$50 mm
0.60% on the balance

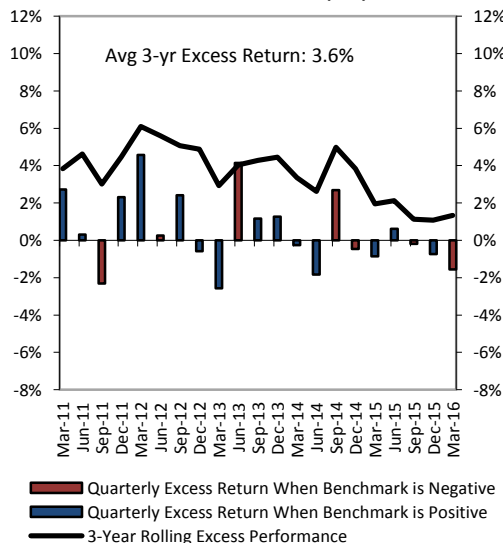
(MF): 0.95% on all assets

CHARACTERISTICS

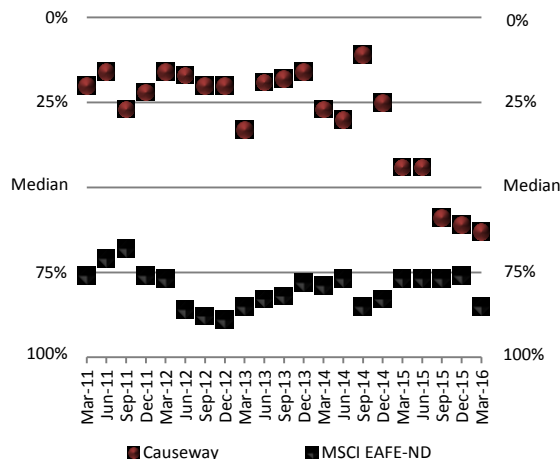
	Portfolio	Benchmark
No of Securities:	57	928
Portfolio Turnover:	33%	N/A
Dividend Yield:	3.8%	3.5%
Equity P/E:	14.2x	15.4x
P/B Ratio:	1.3x	1.5x
No of countries:	13	21
Avg Mkt Cap:	\$50.3 billion	\$52.4 billion

ROLLING PERFORMANCE AND RANKINGS

Three-Year Rolling/Quarterly Excess Performance vs. MSCI EAFE Index (net)



Manager vs. International Core Universe Rolling Three-Year Periods



QUALITATIVE OVERVIEW

- Causeway Capital Management LLC, was founded in June 2001 and is 100% employee-owned. 16 out of 75 employees currently share ownership of the company. The firm currently manages approximately \$40 billion in global, international, and EM equities.
- Twenty professionals are dedicated to the firm's products. The firm's President, Harry Hartford, and CEO, Sarah Ketterer, lead the 8 member portfolio team. The firm introduced a quantitative Emerging Markets strategy, but there is limited input from the fundamental analysts.
- The universe is screened for payout yields in excess of their local market average and an earnings yield that exceeds the local ten-year government bond. These screens identify companies that typically have relatively low reinvestment requirements. An additional screen examines price-to-cash flow within the industry in conjunction with EPS estimate revisions. The screen identifies undervalued companies whose earnings are at a turning point. Companies that pass these screens are subject to extensive fundamental research. After a company has been researched, it is ranked from highest to lowest based on its return potential.
- This strategy focuses solely on bottom-up fundamental analysis; all sector, industry, and country allocations are residual of the stock selection process. Country allocations will vary significantly from the benchmark. This is a deeper value approach relative to peers. 40 to 70 names will be held with turnover averaging less than 40%.

QUALITATIVE RANKING

FIRM	-2	-1	0	1	2
Empl Ownership					●
Mgmt Consistency				●	
Integration				●	
Cost				●	
Litigation				●	
Responsiveness				●	
TOTAL					+7

PERSONNEL	-3	-2	-1	0	1	2	3
Staff Depth						●	
Experience					●		
Stability					●		
Support					●		
TOTAL							+6

PRODUCT	-2	-1	0	1	2
History				●	
Size				●	
Growth				●	
Asset Split				●	
TOTAL					+3

PHILOSOPHY	-3	-2	-1	0	1	2	3
Philosophy						●	
Purchase Discipline						●	
Sell Discipline						●	
Research						●	
Country Allocation						●	
Decision Process						●	
Characteristics						●	
TOTAL							+11

TOTAL QUALITATIVE SCORE: +27

Poor Average Above Average Exceptional

CAUSEWAY CAPITAL MANAGEMENT, LLC – INTERNATIONAL VALUE EQUITY

Key Differentiator: Sarah Ketter and Harry Hartford have compiled a nimble/deep team focused entirely on global equity value investing. Ownership is broadly diversified across employees.

- **Investment Thesis:**

- **Experience/Team Depth** – This is a deep, talented team of 20 investment professionals. The eight portfolio managers average 12 years with the firm and 21 years of total investment experience. The 12 analysts average 2 years with the firm and 7 years of investment experience.
- **Philosophy** – Their philosophy emphasizes a combination of compounding of dividend returns and book value increases. They will often purchase stocks when sentiment is negative, and stocks are trading well below their peak price. An above-average (payout) yield ensures that investors are compensated to wait until the security comes back into favor, and its earnings multiple expands. When stock prices have risen, and yields have fallen – holdings are reduced or eliminated.
- **Ownership** – The shop is 100% employee owned across 16 (of 75) employees.

- **Risks/Concerns:**

- **New Focus** – The largest concern at this time is the firm’s dedication of resources to their new EM strategy. This is a quantitatively based EM strategy and as such should not directly impact the developed strategy. However, as time passes, we will be watching to see if resources move from the developed team to the EM team and if the developed team adopts additional quantitative screens.
- The strategy is very long-term focused with turnover averaging under 40% annually. This can lead to short-term underperformance in more speculative markets.

- **Performance Review and Expectations:**

- During the first quarter 2016, the strategy underperformed the MSCI EAFE Value-ND Index by 59 bps, gross of fees. For the trailing year, the strategy has outperformed by 281 bps. Stock selection generally detracted in the first quarter with selection within Financials accounting for the majority of underperformance. For the year, the underweight to financials and overweight in telecommunications were additive.
- The strategy should add 200-300 bps of excess return annually over the next 5 to 7 years. Since inception, the strategy has added 339 bps of excess return relative to the MSCI EAFE Value Index.

CITY OF LONDON INVESTMENT MANAGEMENT – GLOBAL DEVELOPED CEF INTERNATIONAL EQUITY

FIRM DETAILS

Address: 77 Gracechurch St.,
London, England EC3V 0AS
Phone: 011.44.207.711.0771
Asset Class: Intl Value Equity
Benchmark: MSCI EAFE Index (net)
Founded: 1991
Ownership: 100% owned by City of
London Investment Group
Assets Under Management: \$3.8 billion

PRODUCT DETAILS

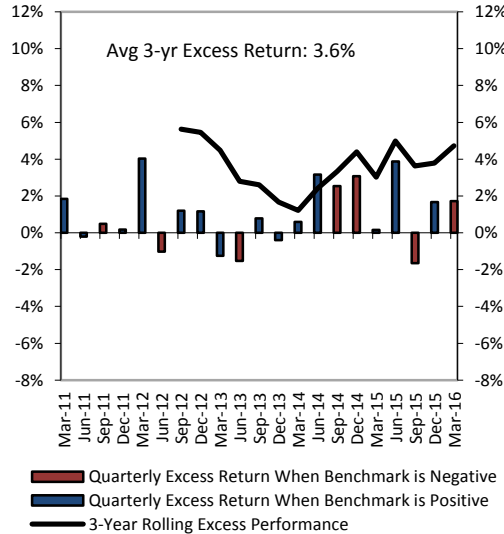
Inception: September 2009
Assets Under Management: \$92 million
Vehicles Offered: SA, CF
Separate Account Minimum: \$25 million
Commingled Fund Minimum: \$1 million
Portfolio Managers/Dual Role PMs: 3
Avg. Yrs of Experience: 19
Avg. Yrs at Firm: 9
Research Analysts: 1
Yrs of Experience: 1
Yrs at Firm: 1
Fee Schedule (CF): 0.65% on all assets
For Summit Clients
(Negotiated from 90 bps)
(Performance-based fees are not available)

CHARACTERISTICS

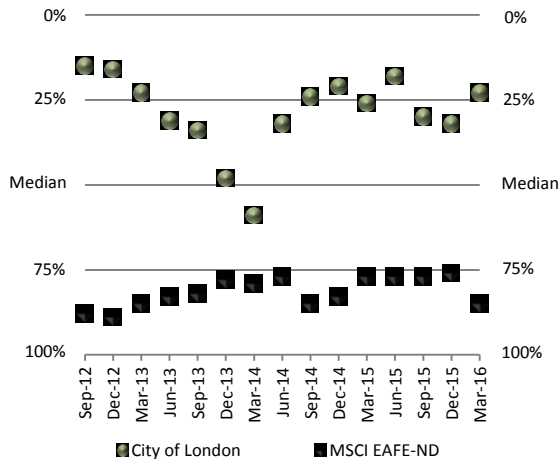
	Portfolio	Benchmark
No of Securities:	36	928
Portfolio Turnover:	60-80%	N/A
Dividend Yield:	3.3%	3.5%
Equity P/E:	14.7x	15.4x
P/B Ratio:	1.3x	1.5x
No of Countries:	68	21
Avg Mkt Cap:	\$38.4 billion	\$52.4 billion

ROLLING PERFORMANCE AND RANKINGS

Three-Year Rolling/Quarterly Excess Performance vs. MSCI EAFE Index (net)



Manager vs. International Core Universe Rolling Three-Year Periods



QUALITATIVE OVERVIEW

- The firm was founded in 1991 as an offshoot from a brokerage company owned by Barry Olliff. Currently, employees own 36.6% of City of London's publicly-traded equity. The firm offers six closed-end fund products: Global Developed, International Developed, Emerging Markets, Frontier Markets, Natural Resources and Emerging Markets Special Situations.
- The team has been managing this strategy since 2009 but the firm has been dedicated to closed-end fund investing since 1991. The processes are the same across each of the firm's closed-end strategies with the variation just being a product of the specific index to which the strategies are managed. The process focuses on the identification of closed-end funds selling at a discount to NAV – the process also assesses countries from a macroeconomic perspective, but this is a secondary component of the process with country allocation accounting for less than 20% of performance attribution.
- In executing the strategy, funds (country/regional funds typically) selling at an approximate 30% discount to their NAV are purchase candidates. The team assesses the macroeconomic climate and makes quarterly country asset allocation decisions based on group consensus. The combined scores rank stocks 1 through 100 – stocks ranked 1 through 30 are eligible for purchase. Issues are sold if the discount narrows to 10 to 15% of NAV.
- Because of their sought after discount to NAV, this is a value strategy. Between 35 and 60 funds will be held, with each in turn holding approximately 70 stocks. Emerging markets weights will be in-line with the MSCI-ACWI index.

QUALITATIVE RANKING

FIRM	-2	-1	0	1	2
Empl Ownership				●	
Mgmt Consistency				●	
Integration				●	
Cost				●	
Litigation				●	
Responsiveness				●	
TOTAL				+6	

PERSONNEL	-3	-2	-1	0	1	2	3
Staff Depth					●		
Experience					●		
Stability					●		
Support					●		
TOTAL					+6		

PRODUCT	-2	-1	0	1	2
History				●	
Size				●	
Growth				●	
Asset Split				●	
TOTAL				+2	

PHILOSOPHY	-3	-2	-1	0	1	2	3
Philosophy					●		
Purchase Discipline					●		
Sell Discipline					●		
Research					●		
Country Allocation					●		
Decision Process					●		
Characteristics					●		
TOTAL					+10		

TOTAL QUALITATIVE SCORE: +24



CITY OF LONDON (COL) INVESTMENT MANAGEMENT – GLOBAL DEVELOPED CEF INTERNATIONAL EQUITY

Key Differentiator: This is a unique closed-end fund approach, with correlation benefits and a strong track record.

- **Investment Thesis:**

- **Differentiated Strategy** – The strategy employed is used by only a small handful of firms. The strategy seeks to assess the relative value of international closed-end funds, purchasing those funds trading at a substantial discount relative to their NAV in anticipation of the discount narrowing. Rather than most managers looking to buy stocks that will outperform, COL is not looking for their managers/purchases to meaningfully outperform. Rather, they are looking for closed-end funds that offer consistent beta exposure at attractive discounts to NAV.
- **Correlation Benefit to Traditional Portfolio** – Because of the unique approach, this fund will offer true diversification benefits to an otherwise traditional, fundamentally structured portfolio. The portfolio will provide a relatively low correlation of excess returns because it is not based on stock selection, but rather designed to capture inefficiencies in the pricing of closed-end funds. The majority of their alpha is derived from discount volatility.
- **Proven Process** – The team has been managing this International strategy since 2009 but the firm, under the management of Barry Oliff (CIO), has been dedicated to closed-end fund investing for more than 25 years. The processes are the same across all firm strategies with the variation being a product of the index to which the strategies are managed.

- **Risks/Concerns:**

- The group only manages \$92 million at this time despite a strong 6+-year track-record and a proven history with a larger asset base managing a similar process within emerging markets. We believe this is a result of the relatively unique nature of the product and that it is only a matter of time before asset growth picks up and the strategy is more broadly adopted.

- **Expectations – Going forward:**

- At heart, the identification/investment in closed-end funds trading at a discount is a value style. It would be expected that in times of market dislocations and/or when equities are unloved, City of London may well underperform, but this should be an attractive period for upgrading the portfolio to more widely discounted funds to produce an expected 300 bps of excess return.
- The strategy will continue to execute the same strategy – gaining most of the opportunity from the volatility of the discount and not solely the closing of the discount to NAV. Volatility in discounts are presently at higher than average levels offering COL ample opportunities to earn value.

TRINITY STREET ASSET MANAGEMENT – EAFE/INTERNATIONAL COMPOSITE

FIRM DETAILS

Address: 1 Cavendish Place
London, England W1G0QF

Phone: 44.207.495.9110

Asset Class: International Equity

Benchmark: MSCI EAFE Index (net)

Founded: 2002

Ownership: 90% employee owned;
10% owned by HGK Asset Mgmt

Assets Under Management: \$3.8 billion

PRODUCT DETAILS

Inception: December 2002

Assets Under Management: \$2.5 billion

Vehicles Offered: SA, CF

Separate Account Minimum: \$25 million

Commingled Fund Minimum: \$1 million

Portfolio Managers/Dual Role PMs: 3

Avg. Yrs. of Experience: 21

Avg. Yrs. at Firm: 7

Analysts: 2

Av g. Yrs. of Experience: 2

Avg. Yrs. At Firm: 0

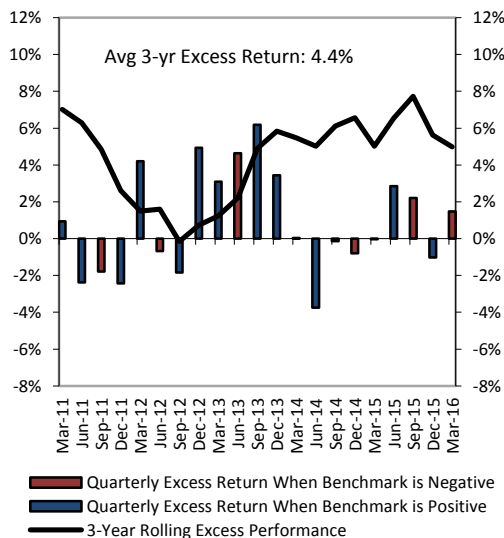
Fee Schedule (SA,CF): 1.00% on all assets
(Performance-based fees are available)

CHARACTERISTICS

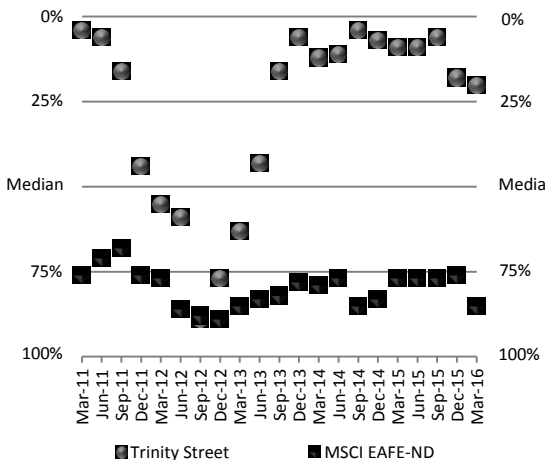
	Portfolio	Benchmark
No of Securities:	31	928
Portfolio Turnover:	27%	N/A
Dividend Yield:	2.6%	3.5%
Equity P/E:	14.7x	15.4x
P/B Ratio:	1.3x	1.5x
No. of Countries:	11	21
Avg Mkt Cap:	\$31.2 billion	\$52.4 billion

ROLLING PERFORMANCE AND RANKINGS

Three-Year Rolling/Quarterly Excess Performance vs. MSCI EAFE Index (net)



Manager vs. International Core Equity Universe Rolling Three-Year Periods



QUALITATIVE OVERVIEW

- Trinity Street was founded in 2002 by Richard Bruce, following his departure from GLG Partners. The firm is 90% employee owned and 10% owned by HGK Asset Management, a firm based out of New Jersey. The group manages a global and international version of their strategy.
- Richard Bruce is the lead portfolio manager. He was a portfolio manager at GLG from 1997-2002, where he focused on international equities. Ed Bell is the firm's other senior partner. He was previously head of the technology analysis division at JPMorgan Cazenova. The firm's founders believe in maintaining a small team of talented investors that are not subject to the distractions incurred at larger investment firms.
- The investment philosophy is based on the view that companies experiencing rapid change are subject to mispricing driven by market inefficiencies. The team focuses on identification of under-recognized change irrespective of whether value, growth, or other trends are generally impacting markets. The starting point for the research process is an event – new management, launch of product, acquisition or disposal, or change in competitive dynamics within a sector or between customers and suppliers. The team presents ideas to each other in an effort to identify investment case weaknesses.
- The strategies are managed in a concentrated style, with 30-35 holdings. The strategy focuses on mid and large cap stocks, emphasizing liquidity risk. The strategy is entirely benchmark agnostic. EM and small cap exposure combined is limited to 30% of the strategy.

QUALITATIVE RANKING

FIRM	-2	-1	0	1	2
Empl Ownership					
Mgmt Consistency					
Integration					
Cost					
Litigation					
Responsiveness					
TOTAL				+2	

PERSONNEL	-3	-2	-1	0	1	2	3
Staff Depth							
Experience							
Stability							
Support							
TOTAL					+4		

PRODUCT	-2	-1	0	1	2
History					
Size					
Growth					
Asset Split					
TOTAL				+6	

PHILOSOPHY	-3	-2	-1	0	1	2	3
Philosophy							
Purchase Discipline							
Sell Discipline							
Research							
Country Allocation							
Decision Process							
Characteristics							
TOTAL					+13		

TOTAL QUALITATIVE SCORE: +25



TRINITY STREET ASSET MANAGEMENT – EAFE/INTERNATIONAL COMPOSITE

Key Differentiator: Global and non-US boutique focused on investing in outcomes of company events that are poorly understood by the broader investment community.

- **Investment Thesis:**

- **Experienced Team** – The firm has four investment professionals with an average over 20 years of experience in the industry. Richard Bruce, the firm’s founder, has been investing in a similar style since 1997.
- **Focus on Inefficient Segment of Market** – The team exclusively focuses on companies experiencing change – new management team, product introduction, acquisition, divestiture, competitive landscape change, or other disruptive event. This bias is designed to allow the portfolio managers to focus on areas of the market where their analysis has the potential to add value.
- **Concentrated Style** – Consistent with their focus on misunderstood segments of the market, the team manages strategies in a concentrated style. The non-US strategy is run with 25-35 holdings.
- **Capacity Focused** – The firm currently manages nearly \$4 billion across their global and non-US strategies. They have communicated plans to close to new assets at \$5 billion.

- **Risks/Concerns:**

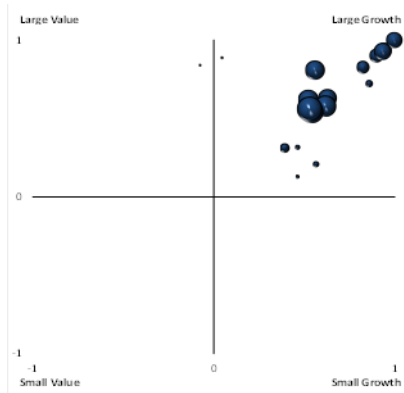
- **Senior PM Departure** – In 2012, Matthew Beesly, one of the team’s portfolio managers, left the firm to take the position as Head of Global Equities at Henderson Global Investors. He was replaced by Sarah Lavers. Sarah has extensive industry experience, including her previous role as Head of Research at Schroders.
- **Benchmark Agnostic** – The team’s investment strategy focuses solely on identifying companies that are mispriced by the market due to under-recognized change. In this process, they devote little focus on positioning the portfolio based on macroeconomic and thematic country and sector trends. This lack of adherence to the benchmark causes the strategy to have higher tracking error.

- **Performance Review and Expectations:**

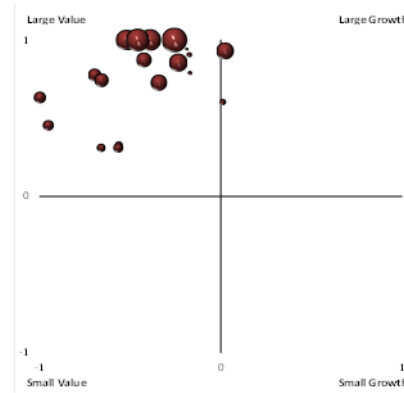
- During the first quarter of 2016, the strategy outperformed the MSCI EAFE (Net) Index by 147 bps, gross of fees. Outperformance for the quarter was driven by positive security selection in the consumer discretionary and technology sectors. From a regional perspective, an overweight to emerging markets (8.5% vs. 0%) combined with positive security selection in the region drove the outperformance.
- The strategy is expected to generate 300-400 bps of excess return vs. the MSCI EAFE Index over a full market cycle.

STYLE ANALYSIS, ROLLING THREE-YEAR PERIODS

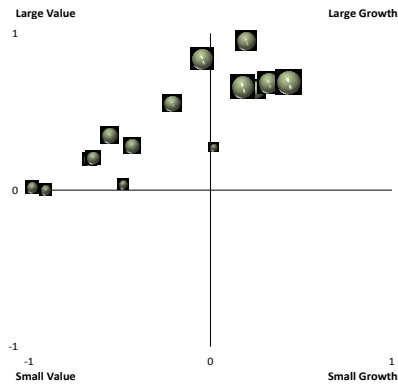
Aristotle



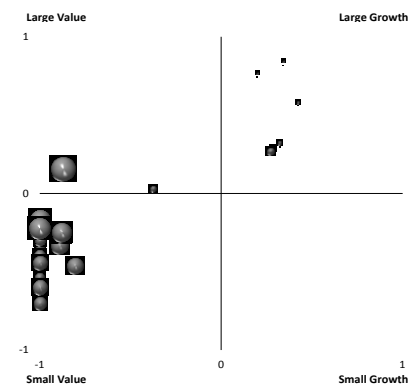
Causeway



City of London



Trinity Street



SIDE BY SIDE COMPARISON

International Core Equity					
As of 3/31/16		Aristotle	Causeway	City of London	Trinity Street
Firm	Headquarters Location	Los Angeles, CA	Los Angeles, CA	Coatesville, PA	London, England
	Firm Assets	\$9.6B	\$40.0B	\$3.9B	\$3.8B
	Ownership	70% employee owned; 30% owned by two MetWest Ventures Professionals	100% employee owned	100% owned by City of London Investment Group	90% employee owned; 10% owned by HGK Asset Management
	Product Inception Date	January 2008	June 2001	September 2009	December 2002
Product	Product Assets	\$352M	\$21.5B	\$92M	\$2.5B
	Vehicle(s) Available	SA, MF	SA, CF, MF	SA, CF	SA, CF
	Separate Account Minimum	\$10M	\$250M	\$25M	\$25M
	Commingled Fund Minimum	N/A	\$50M	\$1M	\$1M
	Mutual Fund Minimum	\$25,000	\$1M	N/A	N/A
	Stock Selection Method	Fundamental	Fundamental	Combined	Fundamental
Characteristics	No. of Securities	37	57	36	31
	Portfolio Turnover	42%	33%	60-80%	27%
	Wtd Avg Market Cap	\$52.0B	\$50.3B	\$38.4B	\$31.2B
	Dividend Yield	2.20%	3.80%	3.30%	2.57%
	P/E (trailing 12-mo)	22.1x	14.2x	14.7x	14.7x
	P/B Ratio	3.8x	1.3x	1.3x	1.3x

ANNUALIZED RETURNS

Manager vs Benchmark										
As of 3/31/16	1 year		3 years		5 years		7 years		10 years	
Aristotle	-3.53%		2.45%		2.74%		12.96%		N/A	
Causeway	-10.00%		3.57%		3.75%		12.65%		3.92%	
City of London	-3.30%		6.96%		5.97%		N/A		N/A	
Trinity Street	-2.84%		7.22%		5.62%		13.36%		5.44%	
Baillie Gifford & Co	-11.12%		3.27%		3.28%		12.76%		4.89%	
Silchester	-4.05%		7.05%		7.77%		14.36%		7.75%	
MSCI EAFE-ND	-8.27%		2.23%		2.29%		9.69%		1.80%	
Calendar Year Return										
	YTD 2016	2015	2014	2013	2012	2011	2010	2009	2008	2007
Aristotle	-1.07%	1.02%	-4.88%	21.45%	18.81%	-12.65%	21.68%	41.55%	-33.13%	N/A
Causeway	-4.56%	-1.91%	-4.61%	27.61%	24.58%	-10.16%	13.91%	37.74%	-42.97%	9.84%
City of London	-1.28%	2.88%	4.46%	19.84%	22.93%	-10.07%	17.20%	N/A	N/A	N/A
Trinity Street	-1.53%	3.46%	-9.18%	44.18%	24.30%	-17.32%	10.36%	46.87%	-41.19%	12.54%
Baillie Gifford & Co	-3.26%	-2.64%	-5.81%	29.99%	17.93%	-10.53%	17.76%	47.64%	-45.68%	22.04%
Silchester	0.65%	2.25%	-1.08%	29.95%	17.12%	-3.51%	16.09%	25.76%	-24.15%	9.65%
MSCI EAFE-ND	-3.01%	-0.81%	-4.90%	22.78%	17.32%	-12.14%	7.75%	31.78%	-43.38%	11.17%

Returns are gross of fees

STATISTICAL SUMMARY

As of 3/31/16	Aristotle	Causeway	City of London	Trinity Street	Baillie Gifford & Co	Silchester	MSCI EAFE-ND
3 Year Performance:							
Annualized Return	2.4%	3.6%	7.0%	7.2%	3.3%	7.0%	2.2%
Annualized St. Dev	10.2%	12.1%	12.6%	14.0%	16.6%	11.2%	11.8%
Sharpe Ratio	0.24	0.29	0.55	0.51	0.19	0.62	0.18
Tracking Error	2.8%	3.5%	3.6%	5.5%	5.8%	3.0%	0.0%
Info Ratio	0.08	0.38	1.30	0.91	0.18	1.59	0.00
Batting Average	50.0%	41.7%	75.0%	58.3%	50.0%	75.0%	0.0%
Up Market Capture	89.3%	97.6%	133.9%	124.1%	129.7%	114.8%	100.0%
Down Market Capture	86.0%	82.7%	84.4%	71.3%	119.0%	63.1%	100.0%
5 Year Performance:							
Annualized Return	2.7%	3.8%	6.0%	5.6%	3.3%	7.8%	2.3%
Annualized St. Dev	15.5%	16.5%	15.9%	17.6%	18.0%	12.4%	14.8%
Sharpe Ratio	0.17	0.22	0.37	0.32	0.18	0.62	0.15
Tracking Error	3.4%	4.0%	3.5%	5.7%	4.7%	4.6%	0.0%
Info Ratio	0.13	0.36	1.05	0.58	0.21	1.19	0.00
Batting Average	50.0%	50.0%	70.0%	50.0%	50.0%	70.0%	0.0%
Up Market Capture	102.5%	108.8%	124.4%	119.9%	122.0%	111.3%	100.0%
Down Market Capture	98.9%	96.8%	94.0%	92.5%	112.3%	66.6%	100.0%
7 Year Performance:							
Annualized Return	13.0%	12.6%	N/A	13.4%	12.8%	14.4%	9.7%
Annualized St. Dev	19.4%	20.1%	N/A	20.0%	21.2%	15.5%	18.8%
Sharpe Ratio	0.66	0.63	N/A	0.66	0.60	0.92	0.51
Tracking Error	4.6%	3.8%	N/A	5.2%	4.4%	5.4%	0.0%
Info Ratio	0.71	0.77	N/A	0.70	0.70	0.86	0.00
Batting Average	57.1%	64.3%	N/A	57.1%	64.3%	60.7%	0.0%
Up Market Capture	113.7%	113.2%	N/A	114.2%	120.8%	102.1%	100.0%
Down Market Capture	93.9%	95.6%	N/A	91.6%	105.3%	64.6%	100.0%
10 Year Performance:							
Annualized Return	N/A	3.9%	N/A	5.4%	4.9%	7.7%	1.8%
Annualized St. Dev	N/A	20.8%	N/A	20.1%	22.1%	15.7%	19.9%
Sharpe Ratio	N/A	0.14	N/A	0.22	0.17	0.43	0.04
Tracking Error	N/A	3.5%	N/A	5.2%	4.7%	7.0%	0.0%
Info Ratio	N/A	0.60	N/A	0.70	0.65	0.85	0.00
Batting Average	N/A	62.5%	N/A	57.5%	62.5%	60.0%	0.0%
Up Market Capture	N/A	110.4%	N/A	112.2%	122.5%	99.9%	100.0%
Down Market Capture	N/A	96.5%	N/A	89.4%	100.7%	64.6%	100.0%

Returns are gross of fees

MANAGER EXCESS RETURN CORRELATION VS. MSCI ACWI EX-US

3-Year Excess Return Correlation vs. MSCI ACWI ex-US

	Baillie Gifford	Silchester	Acadian	Aristotle	Causeway	City of London	Trinity Street
Baillie Gifford	1.00						
Silchester	-0.22	1.00					
Acadian	-0.22	-0.61	1.00				
Aristotle	-0.10	0.42	-0.66	1.00			
Causeway	0.31	0.53	-0.66	0.47	1.00		
City of London	0.07	-0.06	0.16	-0.29	-0.04	1.00	
Trinity Street	0.37	0.41	-0.57	0.28	0.69	0.12	1.00

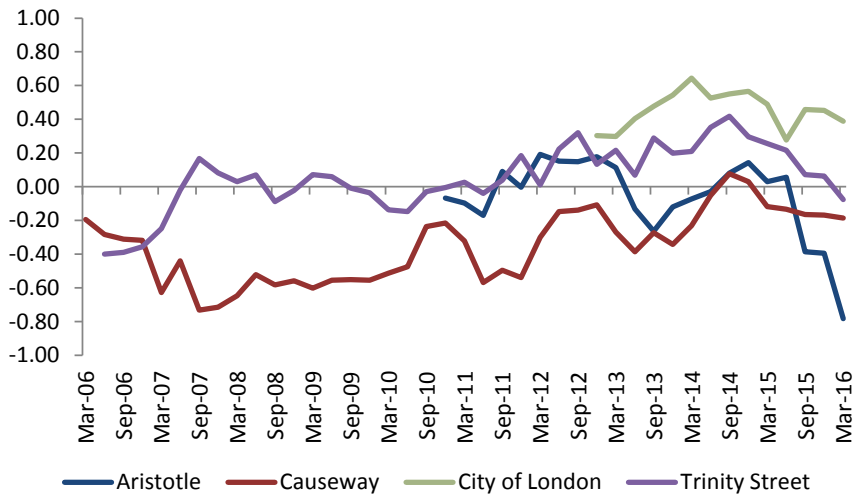
5-Year Excess Return Correlation vs. MSCI ACWI ex-US

	Baillie Gifford	Silchester	Acadian	Aristotle	Causeway	City of London	Trinity Street
Baillie Gifford	1.00						
Silchester	-0.28	1.00					
Acadian	-0.17	-0.51	1.00				
Aristotle	0.06	0.02	-0.38	1.00			
Causeway	0.19	0.24	-0.54	0.33	1.00		
City of London	0.06	-0.10	0.22	-0.21	-0.11	1.00	
Trinity Street	0.25	0.23	-0.41	0.19	0.50	0.12	1.00

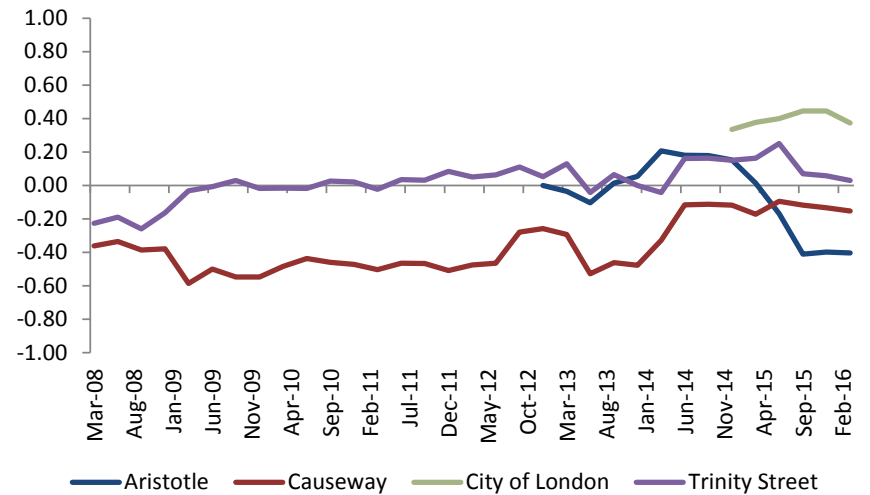
Returns are gross of fees

ROLLING EXCESS RETURN CORRELATION TO CURRENT ACTIVE INTERNATIONAL MANAGER BLEND*

3-Year Rolling Excess Return Correlation vs. MSCI ACWI ex-US



3-Year Rolling Excess Return Correlation vs. MSCI ACWI ex-US



Returns are gross of fees

*Blend is weighted by mandate size of Jacksonville Police & Fire active international equity managers as of 3/31/2016.

Note: Summit Strategies Group (Summit) has prepared this report for the exclusive use by its clients. The information herein was obtained from various sources, which Summit believes to be reliable, and may contain opinions developed by Summit. Summit does not guarantee the accuracy or completeness of the opinions, observations or other information contained in this report. The opinions, market commentary, portfolio holdings and characteristics are as of the date shown and are subject to change. Past performance is no guarantee of future performance. No graph, chart, or formula can, in and of itself, be used to determine which managers or investments to buy or sell. Any forward-looking projection contained herein is based on assumptions that Summit believes may be reasonable, but are subject to a wide range of risks, uncertainties and the possibility of loss. Accordingly, there is no assurance that any estimated performance figures will occur in the amounts and during the periods indicated, or at all. Actual results and performance will differ from those expressed or implied by such forward-looking projections. Any information contained in this report is for information purposes only and should not be construed to be an offer to buy or sell any securities, investment consulting or investment management.