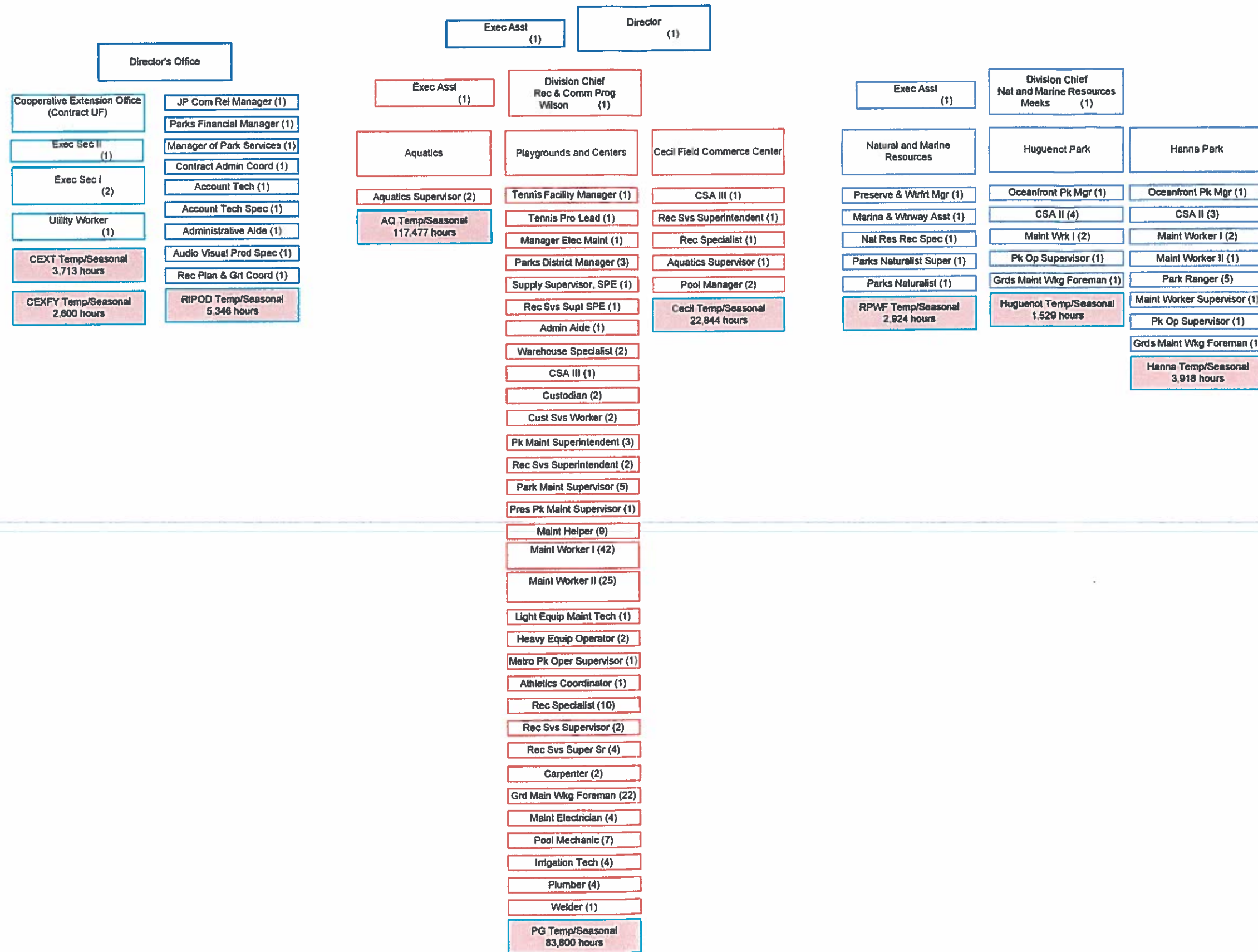


Proposed - Parks and Recreation Department

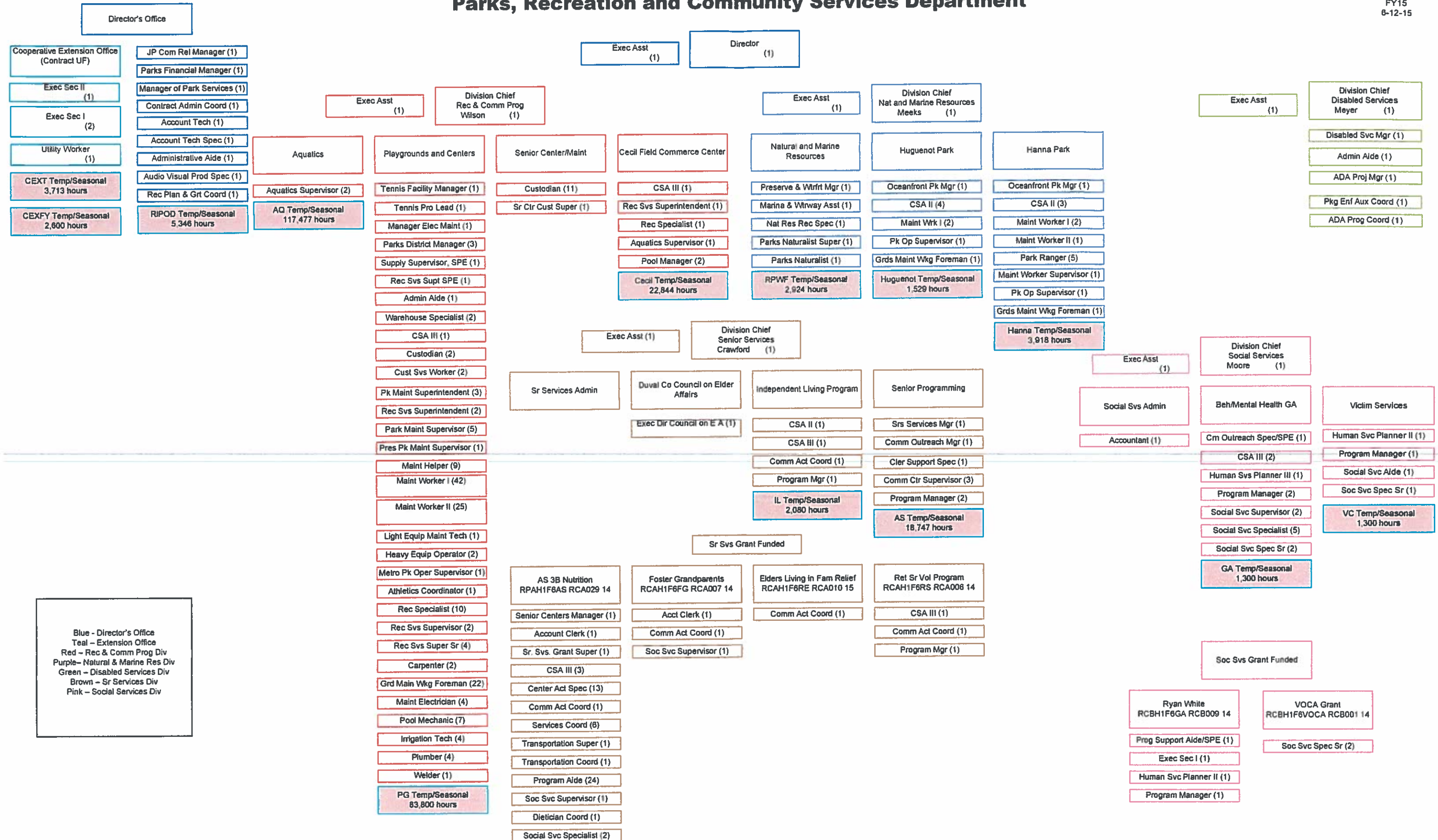
FY16
10-1-15



Blue - Director's Office
 Teal - Extension Office
 Red - Rec & Comm Prog Div
 Purple - Natural & Marine Res Div
 Green - Disabled Services Div
 Brown - Sr Services Div
 Pink - Social Services Div

Parks, Recreation and Community Services Department

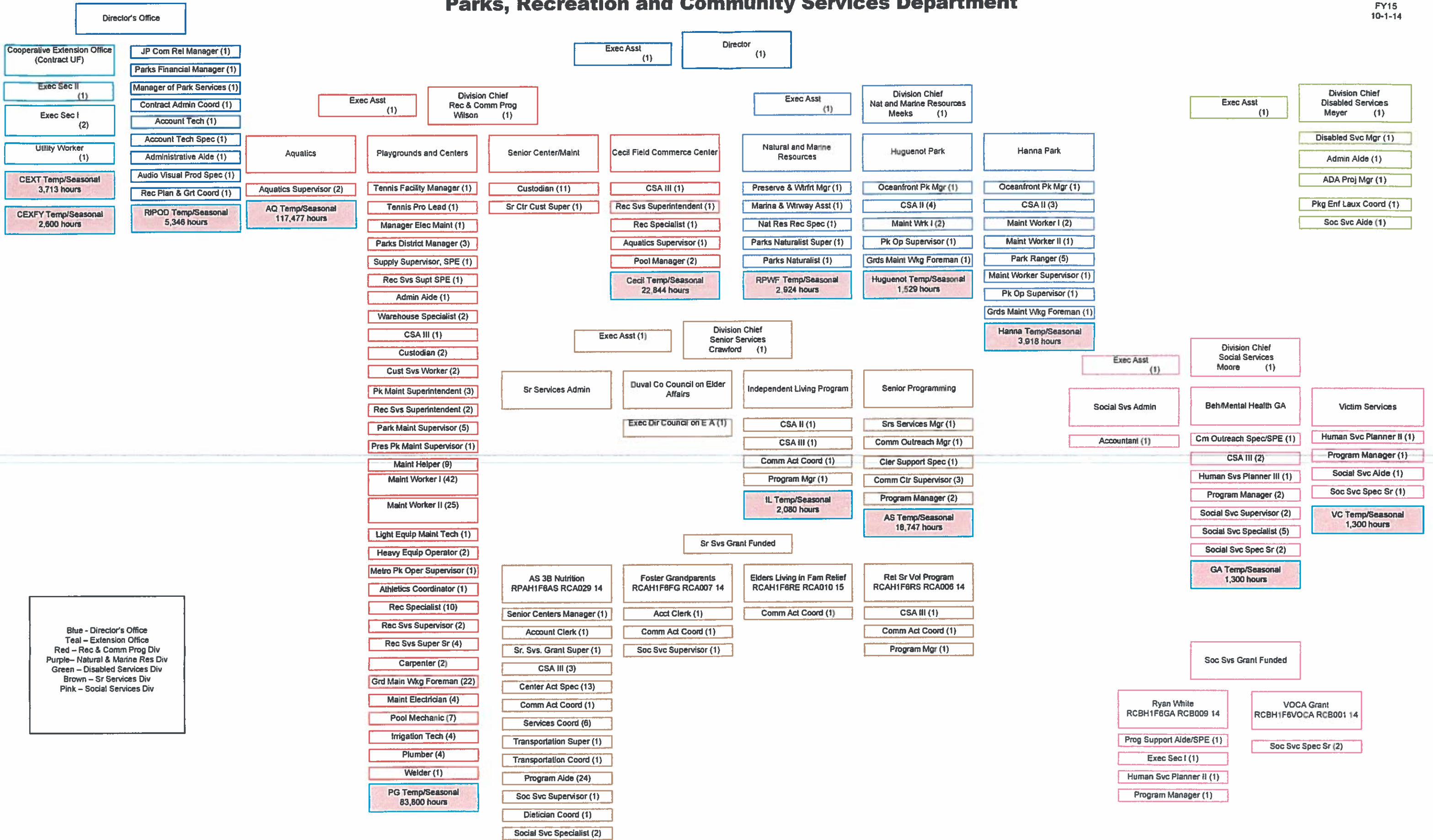
FY15
6-12-15



Blue - Director's Office
 Teal - Extension Office
 Red - Rec & Comm Prog Div
 Purple - Natural & Marine Res Div
 Green - Disabled Services Div
 Brown - Sr Services Div
 Pink - Social Services Div

Parks, Recreation and Community Services Department

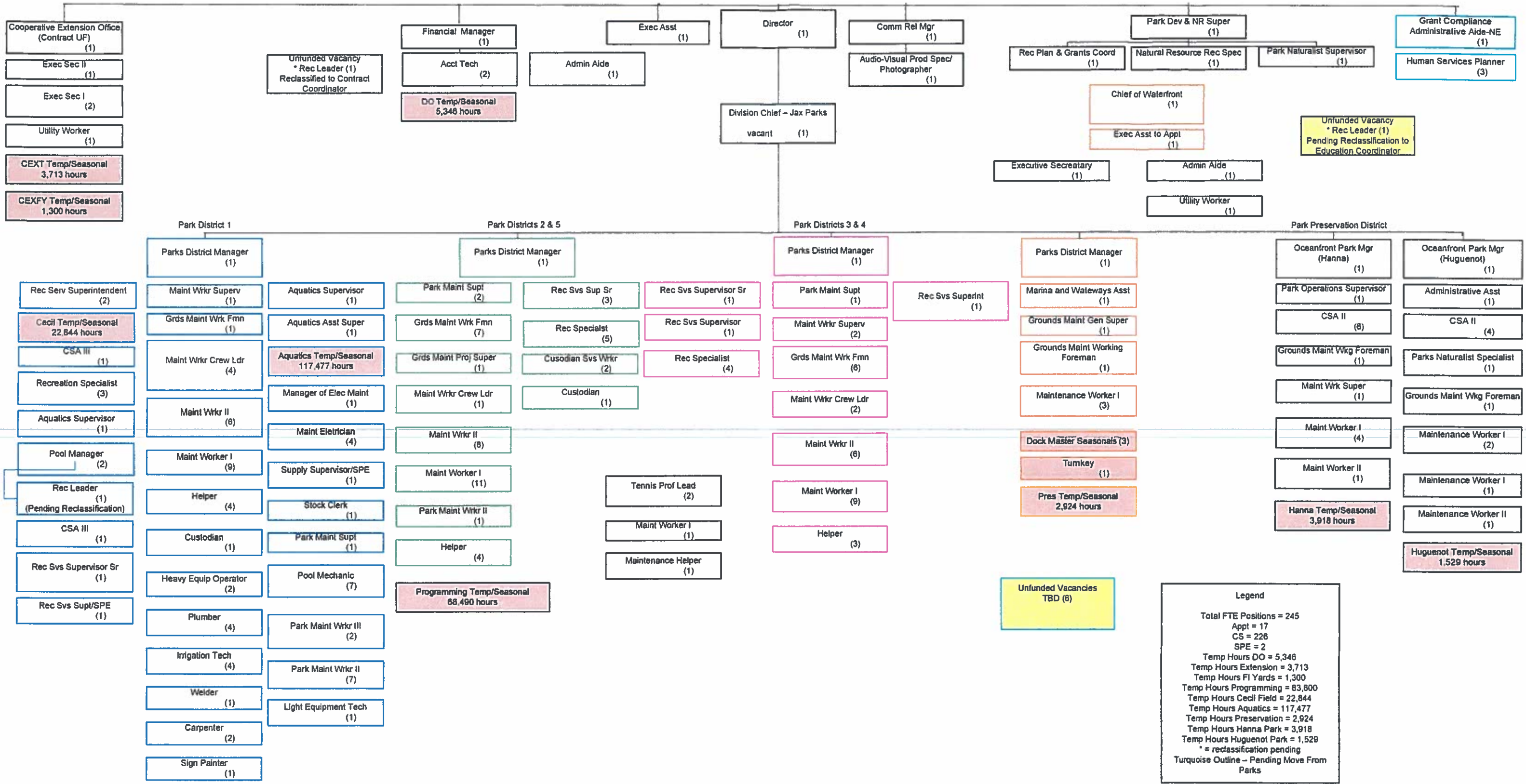
FY15
10-1-14



Blue - Director's Office
 Teal - Extension Office
 Red - Rec & Comm Prog Div
 Purple - Natural & Marine Res Div
 Green - Disabled Services Div
 Brown - Sr Services Div
 Pink - Social Services Div

Parks and Recreation Department

FY14
10-1-13



Legend

Total FTE Positions = 245
 Appt = 17
 CS = 228
 SPE = 2
 Temp Hours DO = 5,346
 Temp Hours Extension = 3,713
 Temp Hours FI Yards = 1,300
 Temp Hours Programming = 83,800
 Temp Hours Cecil Field = 22,844
 Temp Hours Aquatics = 117,477
 Temp Hours Preservation = 2,924
 Temp Hours Hanna Park = 3,918
 Temp Hours Huguenot Park = 1,529
 * = reclassification pending
 Turquoise Outline - Pending Move From Parks

Parks and Recreation Department

FY13
5-29-13

